

1 Claimant/Operator Information

Corporate: Idaho General Mines, Inc.
Address: N. 10 Post Street, Suite 610
Spokane WA 99201
Phone: 509.838.1213
Fax: 509.838.0457

Corporate Contact: Andy Russell
Phone: 509.838.1213
Fax: 509.838.0457

Local Contact: Pat Rogers
Address: 455 Eighth St.
Elko, NV 89801
Phone: 775.753.4988
Fax: 775.753.7722

The taxpayer ID number is [REDACTED]

A list of Claims for the drilling sites is included in Appendix A.

2 Notice Activities

2.1 Activity Description, Map and Schedule of Activities

This Notice describes activities to determine if sufficient water exists for the water supply for the proposed Mount Hope Mine. Four sites are proposed for drilling. Up to four of these holes may be left open for testing. Testing would consist of drawdown tests or slug tests to determine local hydrologic properties. The holes left open for testing would be six inches in diameter. Surface casing would be installed in holes that are left open for testing. The remaining holes would be completed as monitoring wells. The monitoring wells would be completed with two-inch diameter PVC casing, and would be used to measure water levels and collect samples for geochemical analysis.

Drill depths would vary from 750 to 1,400 feet. Figure 1 shows the general project location and Figure 2 shows the Notice Area. The Notice Area is located in Kobeh Valley about 7 miles north of Highway 50. Table 1 shows the legal description for each well site.

Table 1: Well Site Legal Descriptions

Well ID #	Township	Range	Section
RWX-203	T 22 N	R 51 E	21
RWX-204	T 22 N	R 51 E	20
RWX-205	T 22 N	R 51 E	32
RWX-206	T 22 N	R 51 E	30

Activities under this Notice would disturb 0.66 acres (Table 2).

Table 2: Proposed Disturbance

Well ID #	Pad Dimensions (feet) / (acres)	Maximum Hole Diameter (inches)	Maximum Depth (feet)	Overland Travel (feet) / (acres)	Total Disturbance (acres)
RWX-203	(50x120) / 0.14	6	1,400	740 / 0.10	0.34
RWX-204	(50x120) / 0.14	6	1,400	-	0.14
RWX-205	(50x120) / 0.14	6	1,400	-	0.14
RWX-206	(50x120) / 0.14	6	1,400	-	0.14
Test Well Sumps	(5 each @ 40' x 10' x 5')	-	-	-	Within pad disturbance
Observation Well Sumps	(2 each @ 40' x 10' x 8')	-	-	-	Within pad disturbance
Total disturbance (acres)	0.56	-	-	0.10	0.66

Drill pads will be 50 x 120 feet, resulting in approximately 0.14 acres of disturbance per drill pad. There will be sumps associated with the drill holes, but the sumps will be within the drill pad area. There will also be well observation sumps at two drill holes that will be constructed within the pad area. All drill pads will be accessed by overland travel from existing roads, using the shortest distance possible. Overland travel disturbance is calculated based on the assumption that two track disturbance will be created and that each track will be approximately three feet in width. Access to each of the drill sites is displayed on Figure 2. Detail for each drill hole is provided in Figures 3 and 4.

The water supply definition program will utilize a rotary or flooded reverse circulation drill rig. The objective is up to four test wells; however, the number of test wells will be determined by the drilling results. It is possible that all four holes will be monitoring wells if water is not detected in meaningful quantities by the drilling program. The hole lengths are expected to range from approximately 750 feet to a maximum hole length approximately 1,400 feet below ground surface. A nominal six-inch borehole will be drilled for all holes, but the monitor wells will be cased with two-inch PVC pipe. Lithologic samples will be obtained and flow rate will be estimated as each borehole is advanced. Each of the four holes will be logged using standard geophysical methods. Drilling fluid will be collected in sumps located within the perimeter of the pad footprint. After drying, the sumps will be covered with soil salvaged from pad/sump construction and reseeded.

After the well types are determined and drilled, pump tests will be conducted for about 72 hours at a rate of about 450 gpm for each of the test wells. Drawdown data will be collected during the well tests. Water quality samples will be collected during the pumping tests. Water from the pumping test will be spread over sufficient area to prevent erosion and formation of gullies. The water is expected to infiltrate a short distance from the point of discharge.

Water for the drill rigs will be pumped from the existing Risi water well or from the Mount Hope water well or pond. There is also potential for obtaining water from other wells in the vicinity of the project.

Access will be via the existing Garden Pass Road that connects from State Route 278 about eight miles west to the Roberts Creek Road (Figure 2). From the Roberts Creek Road, existing roads

will be used to the greatest extent possible. Only routine maintenance and necessary repairs will be performed on the existing roads.

IGMI plans to minimize the total disturbance by utilizing overland travel to each site. Sediment will be controlled at each drilling site as needed. It is anticipated that tree removal will not be required to allow site access by the equipment.

IGMI has not conducted any previous work in the Notice Area. However, there are other wells and roads which exist in the area. These roads are primarily shown on the applicable USGS maps of the area.

The proposed project will begin in April 2007. Well testing is anticipated to be completed during the summer of 2007. Reclamation will be completed as soon as practicable following completion of the drilling and testing. Testing and monitoring and completion of drill holes may continue throughout April 2009. Should activities extend beyond April 2009, or should IGMI wish to maintain the monitor wells beyond April, 2009, an extension to this Notice may be filed, or the activities may be incorporated into a plan of operations. Cross-country travel routes will be reclaimed as soon as practical after the cessation of drilling activities in the area. Reseeding will occur in the late fall or early spring months.

2.2 Measures to Prevent Unnecessary and Undue Degradation

2.2.1 Surface Disturbance

IGMI will minimize disturbance by utilizing existing roads and trails and cross-country travel routes where feasible.

2.2.2 Cultural Resources

IGMI will stop exploration activities in the vicinity should any previously undiscovered artifact be found, and the BLM authorized Officer will be notified. A 100-foot buffer will be maintained around sites eligible or potentially eligible for the National Register of Historic Places, or unevaluated sites, unless otherwise agreed to by BLM and IGMI. IGMI will take measures to ensure that its employees or others associated with the project do not collect artifacts or vandalize the sites or artifacts in them.

2.2.3 Surface and Ground Water

Drilling activities will not occur within 100 feet of seep, springs, or streams. Drill holes will be closed in accordance with NAC 534 to prevent impacts to groundwater when use as monitor wells has been completed.

2.2.4 Solid Waste

All project-related refuse will be hauled from the site for disposal on a regular basis. No refuse will be disposed on-site. In the event hazardous or regulated material such as diesel fuel is spilled, the area will be cleaned and the Nevada Department of Environmental Protection (NDEP) will be notified as per NDEP regulations.

2.2.5 Air Quality

Project-related traffic will observe prudent speed limits to enhance public safety, protect wildlife and livestock, and minimize fugitive dust.

2.2.6 Fire Protection

All mobile equipment will be properly muffled and equipped with suitable fire suppression equipment, such as fire extinguishers and hand tools.

2.2.7 Noxious Weeds

Equipment used on the project will be washed to remove weed seeds prior to entering the project area. IGMi will also attempt to reduce the spread of noxious weeds on lands disturbed by the proposed project by avoiding travel, whenever possible, through areas infested by noxious weeds to prevent windblown and mechanical transport of seed sources caused by exploration activities.

3 Reclamation Plan

3.1 Re-contouring, Seedbed Preparation, and Seeding

After drying, drill sumps will be backfilled with the material excavated to create the sump and covered with soil salvaged from pad construction and reseeded.

Cross-country travel routes will be scarified and seeded. Efforts will be taken to scarify only those portions of the road which are compacted and require seeding (e.g., tire tracks) while minimizing disturbance to the established vegetation.

Disturbance and cross-country travel routes will be seeded during reclamation. Reclamation will generally be accomplished with native seeds only, but may include some fast growing non-native species. The native species will be representative of the indigenous species present in the adjacent habitat. The reclamation plant list proposed for the project area is the "User Mix" from the Nevada Reclamation Cost Estimation model. This mix may vary depending on seed availability.

Because of the small amount of disturbance, IGMi anticipates using a hand seeder or small tractor-mounted broadcast seeder. Seeding will occur in late fall or early spring to ensure a greater chance of revegetation success. .

Silt fences will be used to contain sediment on reclaimed sites immediately adjacent to drainages as needed.

Open holes and water monitoring wells will be abandoned in accordance with applicable Nevada Division of Water Resources regulations (NAC 534).

4 Reclamation Costs

The proposed reclamation costs are included in Appendix B and are based on Notice Model FY2007 provided by the Battle Mountain Field Office, BLM (BLM Notice Model). The costs are estimated at \$71,625. A copy of the reclamation cost estimate calculated by the BLM Notice Model is provided in Appendix B.

IGMI used the Notice_ModelFY2007 cost estimator for calculating reclamation costs as instructed by BLM. However, the model is based on several assumptions and does not allow the user to input site-specific data. Specifically, the proposed pad dimensions are 50 ft x 120 ft, or 0.14 acres. The model assumes (see model footnote Number 3) that drill sites are 30 ft x 70 ft, and calculates a total disturbance of 0.06 acres per pad (accounting for slope). The only user input allowed with respect to this calculation is the number of drill sites. IGMI is proposing four drill sites, with a total acreage of 0.56 acres, whereas, the model calculates the acreage to be 0.24 acres for drill sites. The sumps are calculated as separate disturbance by the model, but are included within the footprint of the drill pads in the IGMI notice. This adds 0.10 additional acres to the model-calculated drill site disturbance, for a total of 0.45 acres, versus the proposed 0.56 acres.

To adjust the reclamation cost estimate to ensure that this difference in acreage was included in the bond, the number of holes was increased (temporarily) in the model to 7 holes, which resulted in an acreage calculation of 0.71 acres (i.e., just slightly more than the 0.66 acres that IGMI proposes). This increased the total reclamation cost by \$591, and the administrative costs by \$134, or a total of \$725. Therefore, IGMI is proposing to add this \$725 to the reclamation cost that was calculated by the model for the six drill sites (\$70,898) for a total of \$71,625.

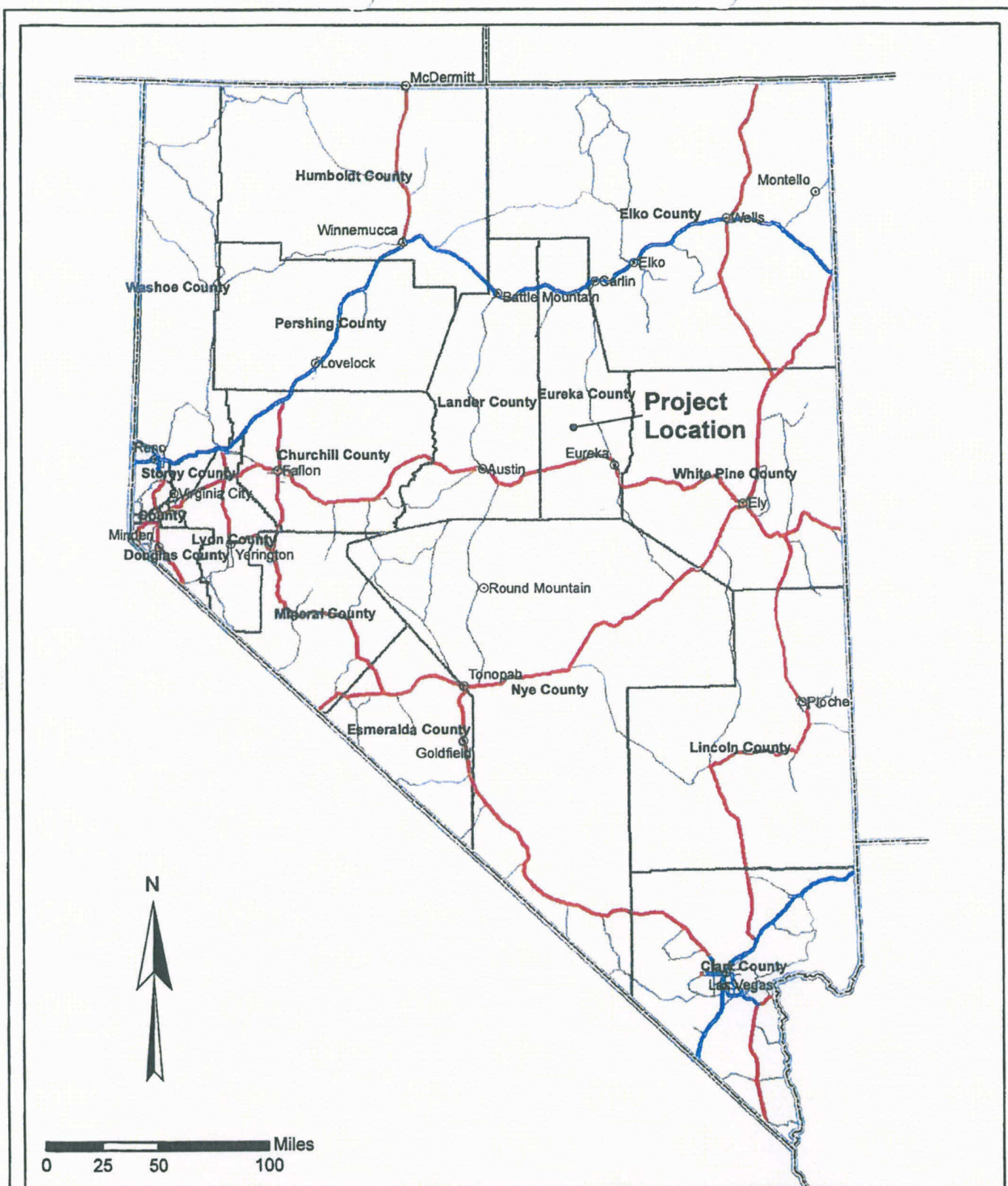
The Notice model was completed for the Kobeh B Notice by using the maximum depth (1,400) feet for all six holes to determine abandonment costs. It was also assumed that all six holes would be completed as monitor wells and would require casing removal/perforation for the total depth of each hole.

Mount Hope Mine Project
Notice for Water Exploration Drilling Activities - Kobre Central B

FIGURES

April 9, 2007

SRK Consulting (U.S.), Inc.



EXPLANATION

- City
- Freeway
- Highway
- Major Road

DESIGNED	grb	03/14/07
DRAWN	jrg	03/14/07
CHECKED		
APPROVED		
REVISED		
REVISED		

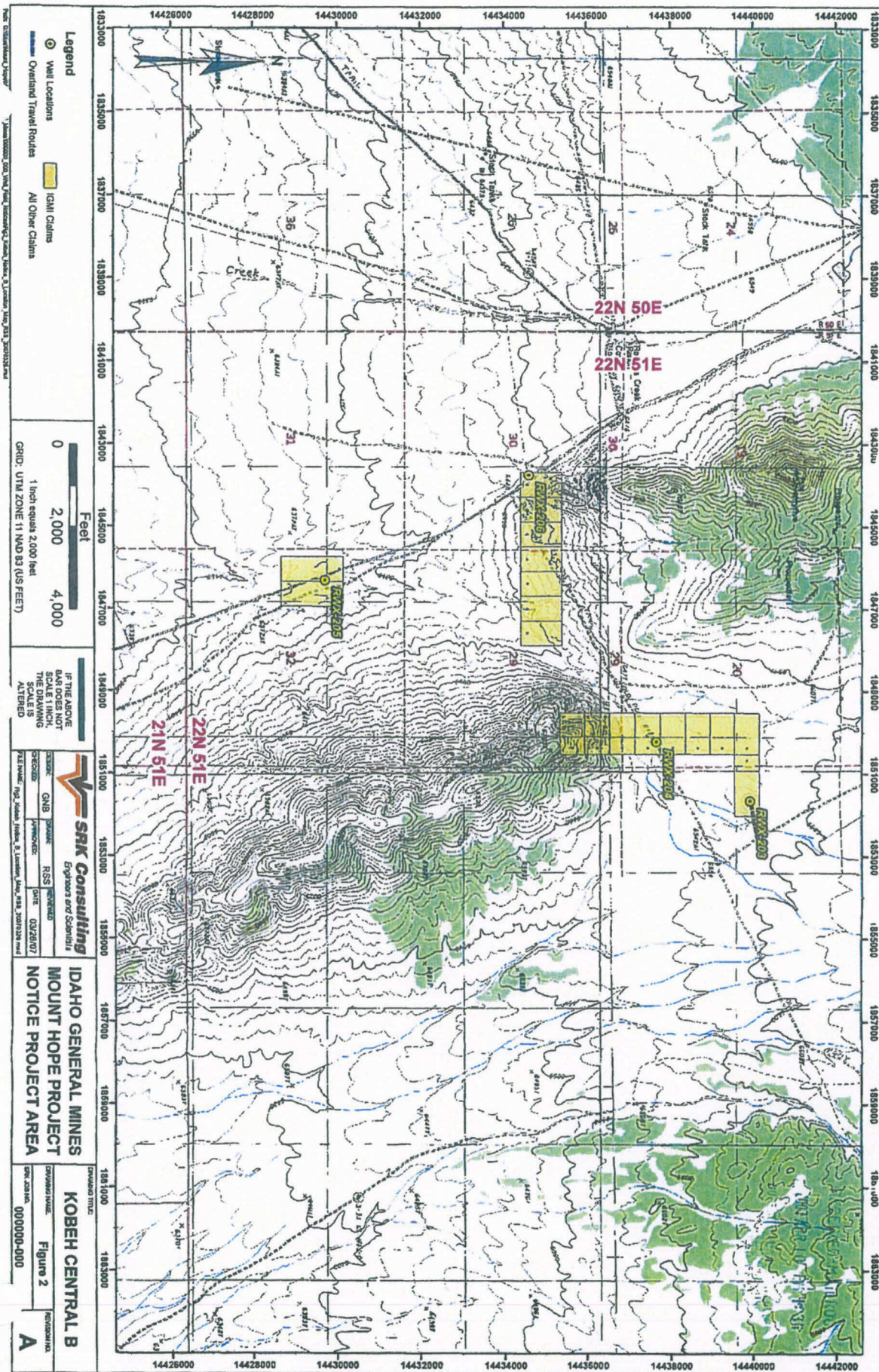
FIGURE 1

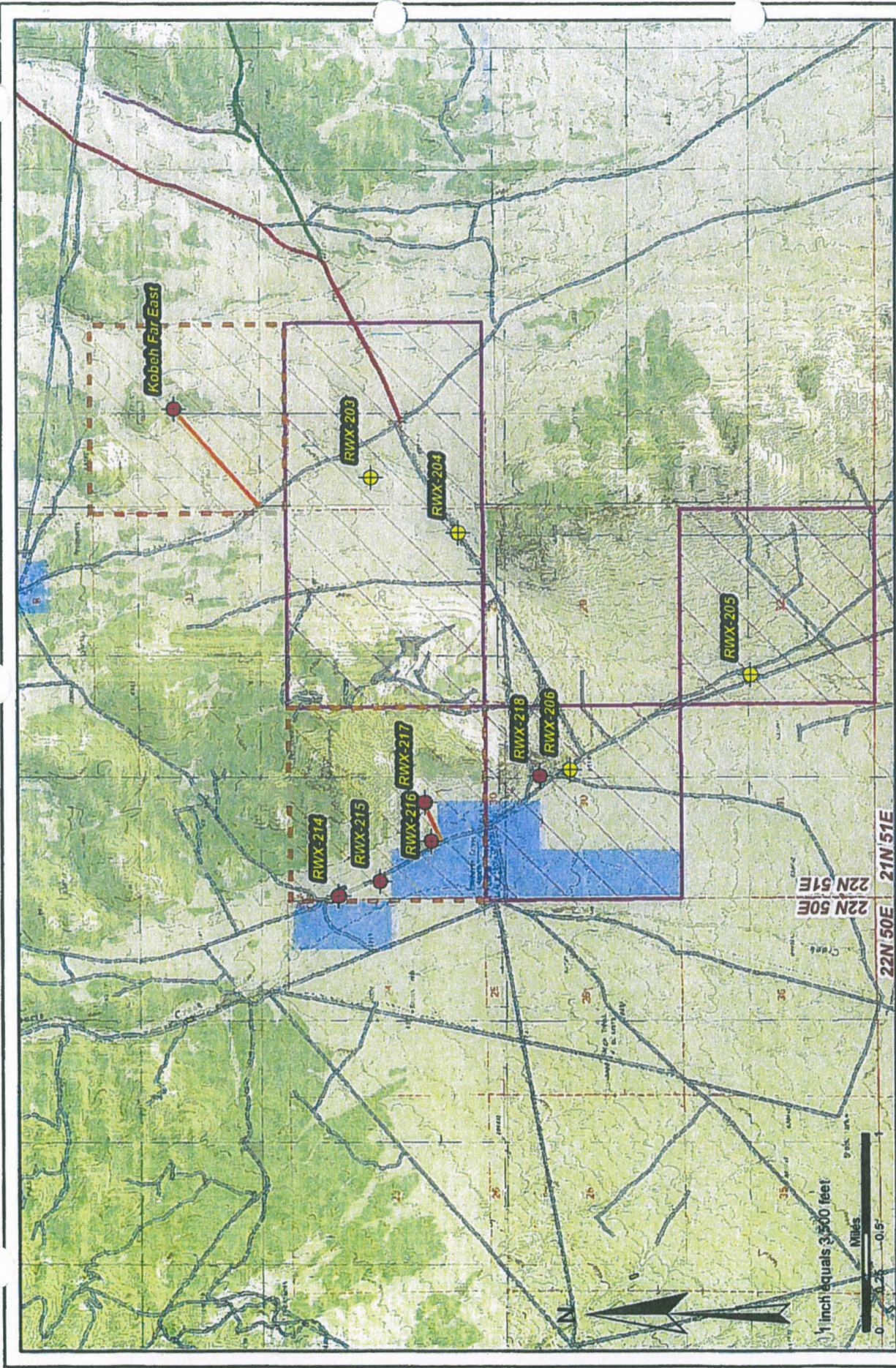
IDAHO GENERAL MINES MOUNT HOPE PROJECT WELL FIELD NOTICES GENERAL VICINITY MAP



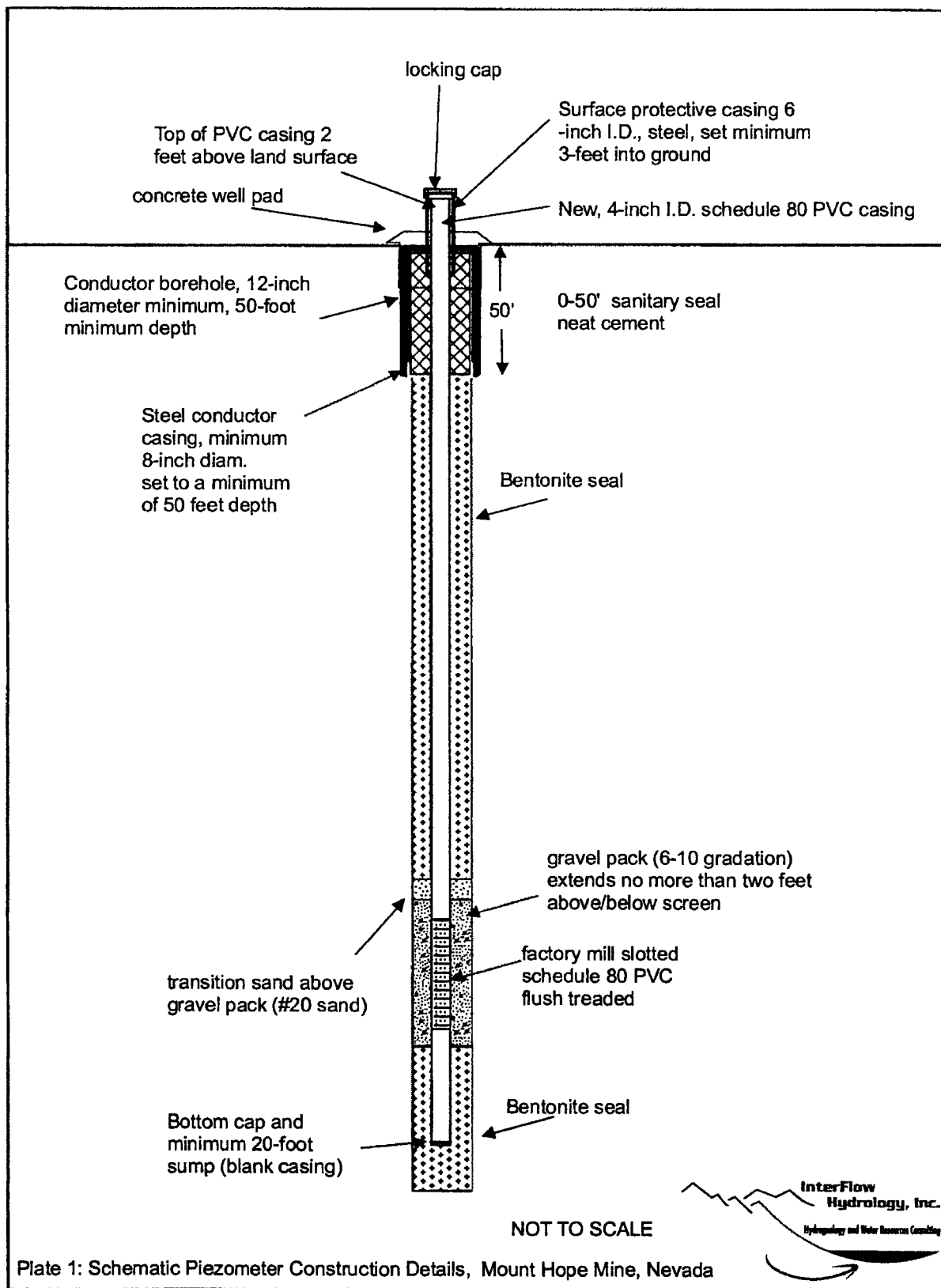
SCALE	AS SHOWN	REVISION
JOB NO:	000000	
MAP NAME:	Fig1_NV_Location_Map_RSS_20070314.mxd	

Path: G:\Sites\Mount_Hope\Idaho_General_Mines\000000_000_Well_Field_Notices





GENERAL MOLY, INC MOUNT HOPE DISTURBANCE NOTICE NVN 083245		KOBEH VALLEY B	
SRK Consulting Engineers and Scientists		DRAWING NO. FIGURE 1	SHEET 1 OF 1
DESIGN: RSS CHECKED: RSS APPROVED: RSS DATE: 1/31/08		SRK JOB NO. 157501-101B	REVISION NO. A
Notice Boundary NVN 083245 (Expansion) NVN 083245 Surface Owner BLM Private		FILE NAME: WFN Fig1 Kobeh B RSS 20080227.mxd Path: G:\GIS\Mount_Hope\Notice_General_Minas\157501_100_Val_Fig1_Notices\WFN_Fig1_Kobeh_B_RSS_20080227.mxd	

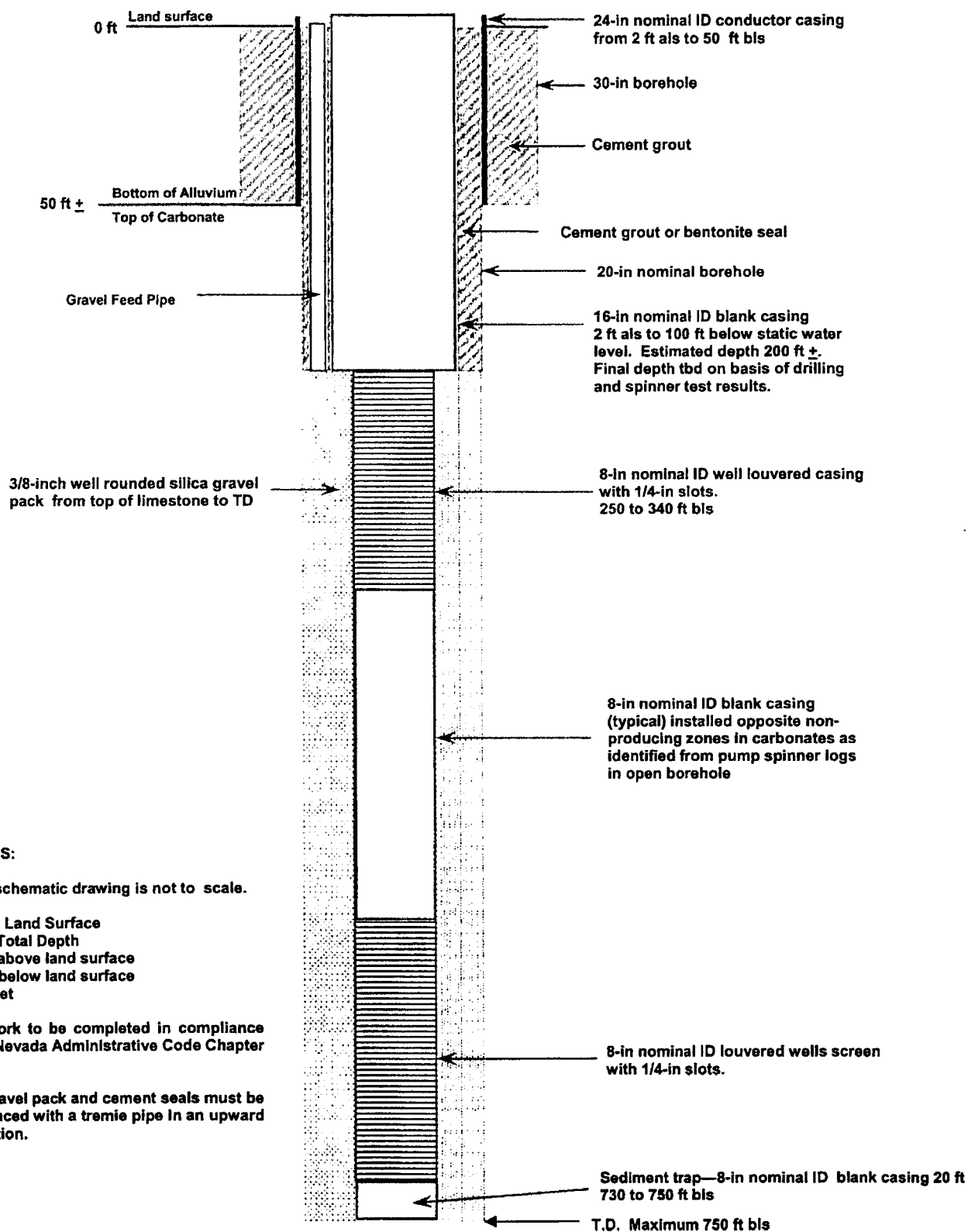


BLM, Frank Bergwall

Bureau of Land Management Notice Level Reclamation Cost Estimation Worksheet											
Cost Data for this Notice Level Reclamation Cost Estimator are based on values and assumptions used in the Standardized Reclamation Cost Estimator (SRCE) Version 1.1.1											
Cost Dates for from October 1, 2006. This worksheet is simpler than the SRCE and does not allow the flexibility of entering project specific information in some situations.											
The model will generate approximately the same reclamation costs as the SRCE model if the same inputs and assumptions are applied.											
Below are the methods and assumptions used by this model to generate a Financial Guarantee Amount											
1.	There are two side hill slope categories used for all calculations in this worksheet. All slopes under 30% (<30%) are assumed to have a slope of 20%. All slopes over 30% (>30%) are assumed to have a slope of 40%.										
2.	All Roads in this worksheet are assumed to have a 14 foot wide dimension across the slope "driveable" part of the road without any safety berms.										
3.	All Drills in this worksheet are assumed to be 30 feet wide. For Drill Sites on slopes <30% they are 70 feet long. For Drill Sites on slopes >30% they are 83 feet long										
4.	All Road and Drill Sites cut banks are assumed to have a 60 degree slope										
5.	All Road and Drill Sites fill slopes are assumed to have an angle of repose of 1.4H:1V or about 70% slope equal to a 35 degree angle.										
6.	Roads are linear features and the units required for input to this worksheet are in linear feet.										
17.	Recontouring for reclamation of Roads, Drill Sites, and Sumps is done with a track excavator of a Cat 320C size with a 1.57 CY bucket and productivity of 139 CY per hour.										
18.	Equipment operator Manpower cost is based on Davis-Bacon wage rates for Northern Nevada.										
9.	Area pay = \$3.00 per hour, FICA = 7.65%, Unemployment = 3% and Workmans Comp= 10.75%										
10.	Laborer cost is based on Davis-Bacon wage rates for Northern Nevada with Area pay = \$2.00 per hour, FICA = 7.65%, Unemployment= 3% and Workmen's Comp= 10.75%										
11.	Revegetation cost is based on the cost of use of a D4 class dozer which scarifies, seeds and drags the seed in on one pass.										
12.	Revegetation costs are based on a per acre basis.										
13.	Drill Sites recontouring cost is based on a standard pad width and length.										
14.	Drill Sites on slopes <30% and Cross Country Drill Sites are 30 feet wide by 70 feet long.										
15.	Drill Sites on slopes >30% are 30 feet wide by 83 feet long.										
16.	On Cross Country Drill Sites, the disturbed area is ripped by a Cat D6 size dozer.										
17.	On Cross Country Drill Sites >30% slopes they are assumed to be outside the Drill Site.										
18.	On Drill Sites >30% slopes sumps are assumed to lie within the 30 foot * 83 foot dimension of the Drill Site.										
19.	Trenches are assumed to be 300 feet long by 14 feet wide by 5 feet deep. They are recontoured with a Cat D6 sized dozer assuming a 208 CY/hour productivity.										
20.	Recontouring earthwork for Roads Drill Sites and Sumps has an assumed swell factor of 20%. Trenches swell factor is 30%.										
21.	Recontouring travel is assumed to have a disturbance of 6 feet wide by the linear feet of travel on slopes under 10%.										
22.	Revegetation costs for all Cross Country disturbance is based on a 12 foot wide seedling width on one pass.										
23.	Revegetation and Demobilization are based on 150 miles one way to project and are based on 2006 Vega Construction and Trucking quotes.										
24.	Travel times are assumed to be 2.73 hours one way to the project.										
25.	Mobilization for a Cat 320C excavator will be charged for regrading of Roads, Drill Sites only.										
26.	If any Trenches or Cross Country travel is included a D6 dozer will be mobilized also.										
27.	All projects that propose drilling will require a minimum Drill Holes Open abandonment cost.										
28.	If a drill hole will not penetrate the static water level it may be abandoned as an Open Hole - Dry.										
29.	If a drill hole is drilled deeper than the static water level it is considered a well hole and must be abandoned as an Open Hole - Wet.										
30.	Mobilization for Drill Holes - Open for Open Hole - Wet will include one drilling plus crew and support equipment										
31.	Mobilization for Drill Holes - Open for Open Hole - Dry will include one drilling plus crew and support equipment										
32.	Drill Hole Plugging Cost for Open Hole - Wet is based on average time to plug a 1000 ft. 6" Drill Hole (using productivity data from 8 drilling contractors December 2006).										

Nevada BLM January 17, 2007

SCHEMATIC WELL DESIGN FOR CARBONATE AQUIFER TEST WELLS IN KOBEH VALLEY



NOTES:

This schematic drawing is not to scale.

LS = Land Surface
TD = Total Depth
als = above land surface
bls = below land surface
ft = feet

All work to be completed in compliance with Nevada Administrative Code Chapter 534.

All gravel pack and cement seals must be emplaced with a tremie pipe in an upward direction.

February 27, 2008	SRCE-based Reclamation Cost Model With Calculators										FY 2007 Model
	Kobeh Valley Water Well Exploration Drilling Notice - NVN-03346 Kobeh Central B - Amendment February 26, 2008 wextra holes										
	Linear Feet of Road	Linear Feet	Labor Cost	Manpower	Equipment	Materials	Cost/Linear Foot	Cost/Linear Foot	Cost/Linear Foot	Cost/Linear Foot	
On a Side Slope											
<30%	0		\$0	\$0.11	\$0.36	\$0.00	\$0.24	\$0.24	\$0.24	Road Reclamation	\$0
>30%	0		\$0	\$0.28	\$0.96	\$0.00	\$0.64	\$0.64	\$0.64	Pad & Sump	\$0
Drill Sites and Sumps											
Drill Sites < 30% slopes	25		\$850	\$34.00	\$42.80	\$0.00	\$76.80	\$76.80	\$76.80	Reclamation	\$1,920
Drill Sites > 30% slopes	0		\$0	\$109.00	\$137.00	\$0.00	\$246.00	\$246.00	\$246.00		\$246
Drill Sites Cross Country	0		\$0	\$7.00	\$3.50	\$0.00	\$10.50	\$10.50	\$10.50		\$0
Sumps	25		\$923	\$36.90	\$46.40	\$0.00	\$83.30	\$83.30	\$83.30		\$2,083
Linear Feet											
Trenches	0		\$0	\$0.93	\$1.71	\$0.00	\$2.64	\$2.64	\$2.64		\$0
Cross Country Travel	4,568		\$183	\$0.04	\$0.02	\$0.00	\$0.06	\$0.06	\$0.06		\$274
Slope Acres											
Total Disturbance	2.84		\$214	\$75.50	\$64.00	\$275.00	\$414.50	\$414.50	\$414.50		\$1,176
150 miles Mobilization											
150 miles Mobilization											
Drill Holes Open											
Feet of Open Holes - Wet	9750		\$11,408	\$1.17	\$2.08	\$0.53	\$3.78	\$3.78	\$3.78	Drill Hole Plugging	\$36,836
Feet of Open Holes - Dry			\$0	\$0.47	\$0.22	\$0.05	\$0.75	\$0.75	\$0.75		\$1
Feet of Casing to Pull	9750		\$16,185	\$1.66	\$4.06	\$0.00	\$5.72	\$5.72	\$5.72		\$55,731
150 miles Mobilization											
150 miles Mobilization											
Disturbance Type											
Roads	0.00		\$0	\$84.91	\$196.49		\$561.40	\$561.40	\$561.40		\$2,000
Drill Sites	1.52		\$156								\$0
Sumps	0.65		\$65								
Trenches	0.00		\$0								
Cross Country	0.63		\$63								
total Notice acres	2.81		\$281								
Insurance											
Bond*											
Contractor Profit											
Contract Administration											
Indirect Costs											
1.5% Labor Cost											\$468
3% Total Reclamation Cost											\$3,055
10% Total Reclamation Cost											\$10,183
10% Total Reclamation Cost											\$10,183
21% of Contract Administration Cost											\$2,138
Total Administration Cost											\$26,027
* Bond required only if total reclamation cost > \$100,000											
Cost per acre			\$45,533								
Financial Guarantee											\$127,866

green cells with blue font is for user input
yellow cells are unit costs

Bureau of Land Management Notice Level Reclamation Cost Estimation Worksheet									
Costs for this Notice Level Reclamation Cost Estimator are based on values and assumptions used in the Standardized Reclamation Cost Estimator (SRCE) Version 1.1.1. Cost Data are from October 1, 2006. This worksheet is simpler than the SRCE and does not allow the flexibility of entering project specific information in some situations. The model will generate approximately the same reclamation costs as the SRCE model if the same inputs and assumptions are applied. Below are the methods and assumptions used by this model to generate a Financial Guarantees Amount.									
1.	There are two side hill slope categories used for all calculations in this worksheet. All slopes under 30% (<30%) are assumed to have a slope of 20%.								
2.	All slopes over 30% (>30%) are assumed to have a slope of 40%.								
3.	All Roads in this worksheet are assumed to have a 14 foot wide dimension across the flat "driveable" part of the road without any safety berms.								
4.	All Drill Sites in this worksheet are assumed to be 30 feet wide. For Drill Sites on slopes <30% they are 70 feet long. For Drill Sites on slopes >30% they are 83 feet long.								
5.	All Road and Drill Sites cut banks are assumed to have a 60 degree slope.								
6.	All Road and Drill Sites fill slopes are assumed to have an angle of repose of 1.4H:1V or about 70% slope equal to a 35 degree angle.								
7.	Roads are linear features and the units required for input to this worksheet are in linear feet.								
8.	Recontouring for reclamation of Roads, Drill Sites, and Sumps is done with a track excavator of a Cat 320C size with a 1.57 CY bucket and productivity of 139 CY per hour. Area pay= \$3.00 per hour. FICA = 7.65%. Unemployment = 3% and Workmen's Comp= 10.75%.								
9.	Equipment operator Manpower cost is based on Davis-Bacon wage rates for Northern Nevada.								
10.	Laborer cost is based on Davis-Bacon wage rates for Northern Nevada with Area pay = \$2.00 per hour, FICA = 7.65%, Unemployment = 3% and Workmen's Comp= 10.75%.								
11.	Revegetation cost is based on the cost of use of a D4 class dozer which scarifies, seeds and drags the seed in on one pass.								
12.	Revegetation costs are based on a per acre basis.								
13.	Drill Sites recontouring cost is based on a standard pad width and length.								
14.	Drill Sites on slopes <30% and Cross Country Drill Sites are 30 feet wide by 70 feet long.								
15.	Drill Sites on slopes >30% are 30 feet wide by 83 feet long.								
16.	On Cross Country Drill Sites, the disturbed area is ripped by a Cat D6 size dozer.								
17.	On Cross Country Drill Sites, the assumed dimensions are 13 feet wide, 30 feet long and 5 feet deep.								
18.	On Drill Sites <30% slopes they are assumed to be outside the Drill Site.								
19.	On Drill Sites >30% slopes sumps are assumed to lie within the 30 foot * 83 foot dimension of the Drill Site.								
20.	Trenches are assumed to be 300 feet long by 14 feet wide by 5 feet deep. They are recontoured with a Cat D6 sized dozer assuming a 208 CY/hour productivity.								
21.	Recontouring earthwork for Roads Drill Sites and Sumps has an assumed swell factor of 20%. Trenches swell factor is 30%.								
22.	Cross Country travel is assumed to have a disturbance of 6 feet wide by the linear feet of travel on slopes under 10%.								
23.	Revegetation costs for all Cross Country disturbance is based on a 12 foot wide seeding width on one pass.								
24.	Mobilization and Demobilization are based on 150 miles one way to project and are based on 2006 Vagte Construction and Trucking quotes.								
25.	Travel times are assumed to be 2.73 hours one way to the project.								
26.	Mobilization for a Cat 320C excavator will be charged for regrading of Roads, Drill Sites only.								
27.	If any Trenches or Cross Country travel is included a D6 dozer will be mobilized also.								
28.	All projects that propose drilling will require a minimum Drill Hole Open abandonment cost.								
29.	If a drill hole will not penetrate the static water level it may be abandoned as an Open Hole - Dry.								
30.	If a drill hole is drilled deeper than the static water level it is considered a wet hole and must be abandoned as an Open Hole - Wet.								
31.	Mobilization for Drill Holes - Open for Open Hole - Wet will include one drill rig plus crew and support equipment.								
32.	Mobilization for Drill Holes - Open for Open Hole - Dry will include one backhoe and operator, and one general laborer.								
33.	Drill Hole Plugging Cost for Open Hole - Wet is based on average time to plug a 1000 ft. 6" Drill Hole (using productivity data from 8 drilling contractors December 2005).								
Nevada BLM, January 17, 2007									



United States Department of the Interior

BUREAU OF LAND MANAGEMENT

Battle Mountain Field Office
50 Bastian Road
Battle Mountain, Nevada 89820
<http://www.nv.blm.gov/battlemountain>
(775) 635-4000 or bmfwweb@nv.blm.gov



In Reply Refer To:
3809 (NV063)
NVN-083245
(08-1A)

MAR 12 2008

*C. Gardner 3/11/08
A. Hummel 3/14/08*

CERTIFIED MAIL: 7007 0710 0004 4481 8102
Return Receipt Requested

DECISION

Brian Musser : 43 CFR 3809 – Surface Management
Environmental Manager : Notice Amendment
General Moly, Inc. :
2215 N. 5th St. :
Elko, NV 89801 :

Determination of Required Financial Guarantee Amount

On February 29, 2008, General Moly, Inc. (GMI) submitted a Notice Amendment for the Mt. Hope Central B Well Project located in MDB&M., T. 22N., R. 51 E., sections 20 21 & 30. The Notice Amendment has been assigned Bureau of Land Management (BLM) case file number NVN-083245 (08-1A).

Your Notice Amendment request to update the disturbance for the permitted wells and add 5 new wells with an increased acreage of 2.88 brings the total project acreage to 4.47 acres. The Notice Amendment documentation has been reviewed and satisfies the requirements of 43 CFR 3809 for operations conducted under a notice.

Amount of Financial Guarantee – This office has reviewed your reclamation cost estimate and has determined that the amount of **\$206,629** is sufficient to meet all anticipated reclamation requirements associated with this Notice. This amount is based on the operator complying with all applicable operating and reclamation requirements.

All line items contained in the approved reclamation cost estimate are not to be considered as the limits of financial guarantee expenditures in that respective category or task should forfeiture of the financial guarantee be necessary. The line items listed are solely for the purpose of arriving at a total amount for the financial guarantee.

This total amount may be spent however the BLM deems necessary to implement the approved reclamation plan and does not represent a reclamation cost limit or constraint.

BLM's review of your proposed operations, determination that your Notice Amendment filing is complete, determination that your operations as proposed will not cause unnecessary or undue degradation, and decision concerning the amount of the required financial guarantee does not relieve you, the operator, of your responsibility to be in compliance with all applicable Federal, State and local laws and regulations, and to obtain all applicable Federal, State and local authorizations and permits.

Required Financial Guarantee – Within sixty (60) days of receipt of this Decision, GMI must submit an acceptable financial guarantee in the amount of **\$206,629** to the Bureau of Land Management, Branch of Minerals Adjudication, P.O. Box 12000, Reno, NV 89520-0006.

Failure to provide an acceptable financial guarantee within the specified time frame will result in an enforcement action against GMI for failure to maintain an acceptable financial guarantee.

Term of Notice - Your Notice will remain in effect for 2 years from the date of the original Decision (April 18, 2007), unless you notify this office beforehand that operations have ceased and reclamation is complete. If you wish to conduct operations for another 2 years after the expiration date of your Notice, you must notify this office in writing on or before the expiration date as required by 43 CFR 3809.333.

Cultural Resources – Under the Archaeological Resources Protection Act and the Native American Graves Protection and Repatriation Act, General Moly is liable for any damages to historic properties, cultural resources, or Native American funerary items or remains, as a result of proposed activities. General Moly is advised that the proposed activity area has not been surveyed for cultural resources. Therefore it is strongly recommended that General Moly retain the services of an archaeological contractor in order to prevent inadvertent damage to cultural resources.

Pursuant 43 CFR 10.4(g) you must notify the authorized officer, Assistant Field Manager, Non Renewable Resources/Field Station Manager, by telephone, with written confirmation, immediately upon the discovery of human remains, funerary items, sacred objects, or objects of cultural patrimony. Further, pursuant to 43 CFR 10.4(c) and (d), you must stop activities in the immediate vicinity of the discovery and protect it from your activities for 30 days or until notified to proceed by the authorized officer.

Guidelines for Operations Conducted Under a Notice - *The enclosed one page document provides additional stipulations concerning your notice.*

Appeal of the Decision Determining the Required Financial Guarantee Amount - *The enclosed one page document provides information on taking appeals to the Interior Board of Land Appeals.* If you do not agree and are adversely affected by this decision, in accordance with 43 CFR 3809.804, you may have the BLM State Director in Nevada review this decision. If you request a State Director review, the request must be received in the BLM Nevada State Office, P.O. Box 12000, Reno, Nevada 89520-0006, no later than 30 calendar days after you receive this decision. A copy of the request must also be sent to this office. The request must be in accordance with the provisions provided in 43 CFR 3809.805.

If a State Director review is requested, this decision will remain in effect while the State Director review is pending, unless a stay is granted by the State Director.

If the Nevada State Director does not make a decision on whether to accept your request for review of this decision within 21 days of receipt of the request, you should consider the request declined and you may appeal this decision to the Interior Board of Land Appeals (IBLA). You then have 30 days in which to file your notice of appeal with the IBLA (see procedures below).

If you wish to bypass the State Director review, this decision may be appealed directly to the IBLA, Office of the Secretary, in accordance with the regulations contained in 43 CFR, Part 4 and the enclosed Form 1842-1. If an appeal is taken, your notice of appeal must be filed in this office (Battle Mountain Field Office, 50 Bastian Road, Battle Mountain, Nevada 89820) within 30 days from receipt of this decision. The appellant has the burden of showing that the decision appealed from is in error.

If you wish to file a petition pursuant to regulations 43 CFR 4.21 for a stay of the effectiveness of this decision during the time that your appeal is being reviewed by the Board, the petition for a stay must accompany your notice of appeal. A petition for a stay is required to show sufficient justification based on the standards listed below. Copies of this notice of appeal and petition for a stay must also be submitted to each party named in the decision and to the IBLA and to the appropriate Office of the Solicitor (see 43 CFR 4.413) at the same time the original documents are filed with this office. If you request a stay, you have the burden of proof to demonstrate that a stay should be granted.

Standards for Obtaining a Stay

Except as otherwise provided by law or other pertinent regulation, a petition for a stay of a decision pending appeal shall show sufficient justification based on the following standards:

1. The relative harm to the parties if the stay is granted or denied,
2. The likelihood of the appellant's success on the merits,
3. The likelihood of immediate and irreparable harm if the stay is not granted, and
4. Whether the public interest favors granting the stay.

Contact - If you have any questions pertaining to this decision, please contact Cory Gardner, Environmental Protection Specialist, at 775-635-4192 or at the above address.



Jeffrey D. Johnson
Acting Assistant Field Manager
Nonrenewable Resources

Enclosures

cc: BLM, Branch of Minerals Adjudication (NV-923)

CGARDNER:cc:03/12/2008:\\Blm\dfs\nv\bm\pub\nonrenewable\minerals\letters\LETTERS
FINALIZED\nOTICESAMENDEDINWOFORMAT\IGM\IGM_83245_081A_CentralB_5new
wells_March2008.doc

83240

GENERAL MOLY, INC.



GENERAL MOLY

2215 N. 5th Street
Elko, Nevada 89801
Phone: 775-753-5009
Fax: 775-753-7722
Email: bmusser@generalmoly.com
Website: www.generalmoly.com

March 12, 2008

Mr. Steve Drummond
BLM Field Office
50 Bastian Rd.
Battle Mountain, NV 89820

Re: NVB000567
Notification of Assignment
General Moly, Inc. – Eureka Moly, LLC.

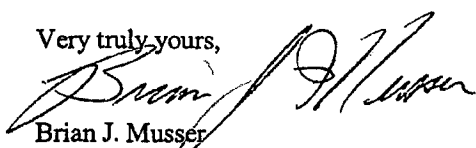
Dear Mr. Drummond,

Effective as of January 1, 2008 General Moly, Inc. assigned (the "Assignment") its Mount Hope Mine Project (the "Project") to Eureka Moly, LLC to facilitate the construction and operation of the Project. At the time of the Assignment, Eureka Moly, LLC was a wholly owned subsidiary of General Moly, Inc. The Project's manager will be Nevada Moly, LLC, also a wholly owned subsidiary of General Moly, Inc.

On February 18, 2008, agreements (the "Agreements") were entered into between General Moly, Inc. and Eureka Moly, LLC, Nevada Moly, LLC and POS-Minerals Corporation (a subsidiary of POSCO) for POS-Minerals Corporation's acquisition of a 20% interest in Eureka Moly, LLC. The Agreements require that General Moly, Inc. transfer all titles, permits, applications, licenses and other ownership documents pertaining to the Project into the name of Eureka Moly, LLC.

All names, addresses and contact information which are on file will remain the same. Form 3809-2 Surface Management Personal Bond has been enclosed to create a new bond for Eureka Moly, LLC. Form 3809-5 has been submitted to the BLM State Office to change the operator name. If you require additional information or would like to discuss any matters associated with the Assignment please call me at the number above.

Very truly yours,


Brian J. Musser
Environmental Manager
Mt. Hope Project
General Moly, Inc.

BJM:mw

Cc: Pat Rogers
Andrew Russell

Enclosures: From 3809-5

JA3970

UNITED STATES
DEPARTMENT OF THE INTERIOR
BUREAU OF LAND MANAGEMENT

FORM APPROVED
OMB No. 1004-0194
Expires: April 30, 2010

NOTIFICATION OF CHANGE OF OPERATOR AND ASSUMPTION OF PAST LIABILITY

The mining law surface management regulations at 43 CFR 3809 require that obligations accrued or conditions created under an operation remain with that operator until (1) Bureau of Land Management (BLM) accepts a satisfactory replacement financial guarantee adequate to cover the previously accrued obligations and (2) BLM receives documentation that a transferee accepts responsibility for the transferor's previously accrued obligations. Therefore, the undersigned transferee hereby assumes all liabilities that may be outstanding on the plan of operations or notice shown below, including, but not limited to, the obligation to properly reclaim and restore the land disturbed on said plan or notice within the approved reclamation plan or notice filed with the BLM; provided that the obligation will not act to increase the potential or cumulative liability above the face amount of the replacement bond to which this notification attaches in the amount stated below as required from the transferee.

1. BLM Notice or Plan of Operations Number(s): NVB 567 - N80914, N81811, N83120, N83245, N83246, N 81485

2. Date BLM Accepted Notice or Approved the Plan of Operations: _____

3. Change of operator on the Notice(s) or Plan(s) shown is proposed on _____ as follows:
(Date)

FROM: Current Operator (Transferor) General Moly, INC.

Address 1726 Cole Blvd. Ste 115, Lakewood, CO 80401

Address _____

By Bruce Hansen

Signature Bruce Hansen (Print Name)

Title CEO

Surface Reclamation Bonding Amount Currently Obligated: Sum of Four Hundred Sixty Six Thousand Three hundred nine

U.S. dollars (\$ 466,309.00).

TO: Proposed Operator (Transferee) Eureka Moly, LLC

Address 1726 Cole Blvd., Ste 115, Lakewood, CO 80401

Address _____

By Bruce Hansen

Signature Bruce Hansen (Print Name)

Title CEO

Surface Reclamation Bond: Sum of Four Hundred Sixty Six Thousand Three hundred nine

U.S. dollars (\$ 466,309.00).

91-0232000

(TIN or SSN)

Change of Operator Approved Pending Acceptance of Satisfactory Bond:

Shawn M. Smith
(Field Manager)

3-17-08
(Date)

cc: State Office
Surety, if applicable

(Continued on page 2)

NOTICES

The Privacy Act of 1974 and the regulation in 43 CFR 2.48(d) provide that you be furnished the following information in connection with information required by this application.

AUTHORITY: 30 U.S.C. 22 et seq.; 43 U.S.C. 1732[b] and 1782[c]; 31 U.S.C. 9301 et seq.; 43 CFR 3802 and 43 CFR 3809.

PRINCIPAL PURPOSE: Information is being used to establish financial responsibility for surface disturbance on public lands.

ROUTINE USES: BLM will only disclose the information according to the regulations at 43 CFR 2.56(d).

EFFECT OF NOT PROVIDING INFORMATION: Disclosure of the information is necessary to receive a benefit. Failure to disclose this information may result in BLM's rejection of your application.

The Paperwork Reduction Act of 1995 requires us to inform you that:

The BLM collects this information to grant the right to conduct exploration and mining activities on public lands.

Response to this request is required to obtain a benefit.

The BLM would like you to know that you do not have to respond to this or any other Federal agency-sponsored information collection unless it displays a currently valid OMB control number.

BURDEN HOURS STATEMENT: Public reporting burden for this form is estimated to average 8 hours per response, including the time for reviewing instructions, gathering and maintaining data, and completing and reviewing the form. Direct comments regarding the burden estimate or any other aspect of this form to U.S. Department of the Interior, Bureau of Land Management (1004-0194), Bureau Information Collection Clearance Officer (WO-630), 1849 C Street, N.W., Mail Stop 401 LS, Washington, D.C. 20240.



EUREKA MOLY

2215 N. 5th Street
Elko, Nevada 89801
Phone: 775-748-6000
Fax: 775-753-7722
Email: bmusser@generalmoly.com
Website: www.generalmoly.com

March 9, 2009

Mr. Doug Furtado – Field Manager
Bureau of Land Management
Mount Lewis Field Office
50 Bastian Road
Battle Mountain, Nevada 89820

RE: Kobeh Central B Notice NVN-083245 – Request of Notice Extension
3809 (NV063)

Dear Mr. Furtado:

This is to inform the Bureau of Land Management (BLM) that General Moly, Inc. (General Moly) is seeking to extend under the provisions of 43 CFR §3809.333, Notice NVN-083245, which is due to expire on April 18, 2009, for two more years. An updated reclamation cost estimate is attached for your review

The updated reclamation cost estimate was calculated using the Notice Model provided by the BLM (Model_FY2008_3.1 – *April 2008 version*). All previous disturbance under Notice NVN-083245 is included as well as a correction to the Drill Holes Open: 'feet of open holes – wet' reflecting the number of feet that have been plugged and abandoned and the remaining 13,875 feet of open holes. Using this model and entering the corrected disturbance data resulted in a reclamation cost estimate of \$183,751 (Attachment 1). This reduces the bond requirements associated with this notice by \$35,867 from the previous amount of \$219,618.00.

If you have any questions regarding this request for extension or the updated reclamation cost estimate, please contact me at 748-6067.

Very truly yours,

Brian J. Musser
Environmental Manager
Mount Hope Project

Attachments: Attachment 1 – Updated Reclamation Cost Estimate
Attachment 2- 3809-4A

cc: Pat Rogers, GMI
Casey Kelly, GMI
File

SRCE-based Reclamation Cost Model With Calculators									
FY 2007 Model Version 3.1									
For Notice-Level Exploration									
Mount Hope Exploration - Eureka Moity, LLC - NVN-083245 Updated Reclamation Cost Estimate									
March 10, 2009									
Linear Feet of Road On a Side Slope <30% >30%	Linear Feet	Recontouring Cost <30% Recontouring Cost >30%	Labor Cost	Manpower	Equipment	Materials	Cost/Linear Foot	Road Reclamation	
Drill Sites and Sumps Drill Sites < 30% slopes Drill Sites > 30% slopes Drill Sites Cross Country Sumps	Number 47	Recontouring Cost Recontouring Cost Ripping Cost Recontouring Cost	\$1,624 \$0 \$0 \$1,038	Manpower \$34.40 \$110.20 \$4.94 \$22.00	Equipment \$43.20 \$138.40 \$2.03 \$28.80	Materials \$0.00 \$0.00 \$0.00 \$0.00	Cost each \$77.60 \$248.60 \$6.97 \$48.80	Pads Sump Reclamation \$3,663 \$0 \$2,303	
Trenches Cross Country Travel	Linear Feet 5,916	Recontouring Cost Ripping Cost	\$0 \$167	Manpower \$0.95 \$0.03	Equipment \$1.75 \$0.01	Materials \$0.00 \$0.00	Cost/Linear Foot \$2.67 \$0.04	Road Reclamation \$0 \$235	
Total Disturbance	Slope Acres 4.52	Revegetation Cost	\$330	Manpower \$73.00	Equipment \$62.00	Materials \$302.50	Cost/Acre \$437.50		\$1,977
150 miles Mobilization 150 miles Mobilization		Mobilization Cost-excavator Mobilization Cost-dozer	\$356 \$563	Manpower \$356.17 \$563.21	Equipment \$418.11 \$777.77	Materials \$0.00 \$0.00	Mob+Demob \$774.28 \$1,340.98		\$774 \$1,341
Drill Holes Open Feet of Open Holes - Wet Feet of Open Holes - Dry Feet of Casing to Pull	#/Feet 13875	Plugging Cost - Wet Plugging Cost - Dry Pulling Casing	\$5,855 \$0 \$22,852	Manpower \$0.42 \$0.48 \$1.65	Equipment \$1.49 \$0.23 \$5.39	Materials \$0.58 \$0.04 \$0.00	Cost/Foot \$2.50 \$0.75 \$7.03	Drill Hole Plugging \$34,674 \$0 \$97,583	
150 miles Mobilization 150 miles Mobilization		Mobilization Cost - Wet Mobilization Cost - Dry	\$1,412 \$0	Manpower \$1,412.16 \$313.20	Equipment \$2,510.52 \$168.65	Materials \$0.00 \$0.00	Mob+Demob \$3,922.68 \$481.85		\$3,923 \$0
Disturbance Type	Total Acres	Total Linear Feet	Slope Acres					Total Reclamation Cost	\$148,473
Roads	0.00	0	2.88						
Drill Sites	2.88		2.94						
Sumps	0.77		0.77						
Trenches	0.00	0	0.00						
Cross Country	0.81	5,916	0.81						
total Notice acres	4.40		4.52						
Insurance Bond* Contractor Profit Contract Administration Indirect Costs									
green cells with blue font is for user input yellow cells are unit costs									
* Bond required only if total reclamation cost > \$100,000									
								Total Labor	\$34,198
								1.5% Labor Cost	\$513
								3% Total Reclamation Cost	\$4,394
								10% Total Reclamation Cost	\$14,647
								10% Total Reclamation Cost	\$14,647
								21% of Contract Administration Cost	\$3,076
								Total Administration Cost	\$37,278
								Financial Guarantee Amount	\$183,751
								Cost per acre	\$41,180

Bureau of Land Management Notice Level Reclamation Cost Estimation Worksheet	
Costs for this Notice Level Reclamation Cost Estimator are based on values and assumptions used in the Standardized Reclamation Cost Estimator (SRCE) Version 1.1.2. Cost Data are from August 1, 2007. This worksheet is simpler than the SRCE and does not allow the flexibility of entering project specific information in some situations. The model will generate approximately the same reclamation costs as the SRCE model if the same inputs and assumptions are applied. Below are the methods and assumptions used by this model to generate a Financial Guarantee Amount.	
1. There are two side hill slope categories used for all calculations in this worksheet. All slopes under 30% (<30%) are assumed to have a slope of 20%.	
2. All slopes over 30% (>30%) are assumed to have a slope of 40%.	
3. All Roads in this worksheet are assumed to have a 14 foot wide dimension across the flat "drivable" part of the road without any safety berms.	
4. All Drill Sites in this worksheet are assumed to be 30 feet wide. For Drill Sites on slopes <30% they are 70 feet long. For Drill Sites on slopes >30% they are 83 feet long.	
5. All Road and Drill Sites cut banks are assumed to have a 60 degree slope.	
6. All Road and Drill Sites fill slopes are assumed to have an angle of repose of 1.4H:1V or about 70% slope equal to a 35 degree angle.	
7. Roads are linear features and the units required for input to this worksheet are in linear feet.	
8. Recontouring for reclamation of Roads, Drill Sites, and Sumps is done with a track excavator of a Cat 320C size with a 1.57 CY bucket and productivity of 139 CY per hour. Area pay= \$3.00 per hour. FICA = 7.65%. Unemployment = 3% and Workmen's Comp= 9.50%.	
9. Laborer cost is based on Davis-Bacon wage rates for Northern Nevada with Area pay = \$2.00 per hour. FICA = 7.65%. Unemployment = 3% and Workmen's Comp= 9.50%.	
10. Revegetation cost is based on the cost of use of a D4 class dozer which scallies, seeds and drags the seed in on one pass.	
11. Revegetation costs are based on a per acre basis.	
12. Drill Sites recontouring cost is based on a standard pad width and length.	
Drill Sites on slopes <30% and Cross Country Drill Sites are 30 feet wide by 70 feet long.	
Drill Sites on slopes >30% are 30 feet wide by 83 feet long.	
13. On Cross Country Drill Sites, the disturbed area is ripped by a Cat D6 size dozer.	
On Drill Sites <30% slopes they are assumed to be outside the Drill Site.	
On Drill Sites >30% slopes sumps are assumed to lie within the 30 foot x 83 foot dimension of the Drill Site.	
14. Trenches are assumed to be 300 feet long by 14 feet wide by 5 feet deep. They are recontoured with a Cat D6 sized dozer assuming a 208 CY/hour productivity.	
15. Recontouring earthwork for Roads, Drill Sites and Sumps has an assumed swell factor of 20%. Trenches swell factor is 30%.	
16. Cross Country travel is assumed to have a disturbance of 6 feet wide by the linear feet of travel on slopes under 10%.	
17. Revegetation costs for all Cross Country disturbance is based on a 12 foot wide seeding width on one pass.	
18. Mobilization and Demobilization are based on 150 miles one way to project and are based on the 2007 SRCE & RSM means with Davis-Bacon Mobil/Demob worksheet.	
Travel times are assumed to be 2.73 hours one way to the project.	
19. Mobilization for a Cat 320C excavator will be charged for regrading of Roads, Drill Sites only.	
If any Trenches or Cross Country travel is included a D6 dozer will be mobilized also.	
20. All projects that propose drilling will require a minimum Drill Holes Open abandonment cost.	
If a drill hole will not penetrate the static water level it may be abandoned as an Open Hole - Dry.	
If a drill hole is drilled deeper than the static water level it is considered a wet hole and must be abandoned as an Open Hole - Wet.	
21. Mobilization for Drill Holes - Open for Open Hole - Wet will include one drilling rig plus crew and support equipment.	
22. Mobilization for Drill Holes - Open for Open Hole - Dry will include one backhoe and operator, and one general laborer.	

Nevada BLM, April 8, 2008

UNITED STATES
DEPARTMENT OF THE INTERIOR
BUREAU OF LAND MANAGEMENT

FORM APPROVED
OMB No. 1004-0194
Expires: April 30, 2010

SURFACE MANAGEMENT PERSONAL BOND RIDER

In consideration for this rider and the acceptance of this rider by the Bureau of Land Management (BLM) on behalf of the United States of America, this rider attaches to and is part of Surface Management Bond No. NVN083245 issued on behalf of GENERAL MOLY, INC. (GMI)
2215 N 5th Street, Elko, NV 89801

principal, in favor of the United States. The bond provides coverage as shown below:

Individual _____; Statewide Nevada; Nationwide _____
(Enter BLM Serial No.) (Enter State Name, if applicable) (Enter "Yes", if applicable)

☒ **Increase/Decrease in Dollar Amount of Bond Coverage**

It is understood and agreed that GENERAL MOLY, INC., principal, is ~~increasing~~ decreasing the coverage of this bond to the amount shown below; however, this rider will not act to increase/decrease the actual cumulative or potential liability above the face amount of the bond, to wit: ONE HUNDRED EIGHTY-THREE THOUSAND SEVEN HUNDRED FIFTY-ONE AND 00/100'S
_____ U.S.dollars (\$ 183,751.00).

☐ **Statewide/Nationwide Bond**

The principal hereby agrees to and extends bond coverage to include any and all operations under 43 CFR 3802 and 43 CFR 3809.

Include name of State if coverage is Statewide _____.

☒ **Bond Coverage Extended**

The principal hereby agrees to and extends bond coverage to include notice-level operations pursuant to regulations at 43 CFR 3809.

☐ **Third Party Posting of the Financial Instrument for the Bond**

It is understood and agreed that _____, is pledging the financial instrument to secure the attached bond on behalf of, _____ operator and principal on the bond.

☐ **Coprincipal**

It is understood and agreed that _____, principal, is extending the coverage of the bond referenced above to include liabilities for operations conducted by _____ on notice/plan of operations serialized _____.

(Continued on page 2)

NOTE

This coverage of obligations will continue whether or not a notice/plan of operations has subsequently been suspended or terminated. This rider will not act to increase the actual cumulative or potential liability of the principal or bond above the face amount of the bond. Nothing herein contained will vary, alter, or extend any provision or condition of this bond except as herein expressly stated.

Executed this _____ day of _____ March _____, 20⁰⁹ :

(Principal)

(TIN or SSN, if applicable)

(By)

(Title)

2215 N 5th Street, Elko, NV 89801

(Business Address)

State of _____ Nevada _____ County of _____

Subscribed and sworn to before me this _____

by _____

(Notary Public)

(My Commission Expires)

NOTICES

The Privacy Act of 1974 and the regulation in 43 CFR 2.43(d) provide that you be furnished the following information in connection with information required by this application.

AUTHORITY: 30 U.S.C. 22 et seq.; 43 U.S.C. 1732[b] and 1782[c]; 31 U.S.C. 9301 et seq.; 43 CFR 3802 and 3809.

PRINCIPAL PURPOSE: Information is being used to establish financial responsibility for surface disturbance on public lands.

ROUTINE USES: BLM will only disclose the information according to the regulations at 43 CFR 2.56(d).

EFFECT OF NOT PROVIDING INFORMATION: Disclosure of the information is necessary to receive a benefit. Failure to disclose this information may result in BLM's rejection of your application.

The Paperwork Reduction Act of 1995 requires us to inform you that:

The BLM collects this information to grant the right to conduct exploration and mining activities on public lands.

Response to this request is required to obtain a benefit.

The BLM would like you to know that you do not have to respond to this or any other Federal agency-sponsored information collection unless it displays a currently valid OMB Control Number.

BURDEN HOURS STATEMENT: Public reporting burden for this form is estimated to average 8 hours per response, including the time for reviewing instructions, gathering and maintaining data, and completing and reviewing the form. Direct comments regarding the burden estimate or any other aspect of this form to U.S. Department of the Interior, Bureau of Land Management (1004-0194), Bureau Information Collection Clearance Officer (WO-630), 1849 C Street, N.W., Mail Stop 401 LS, Washington, D.C. 20240.

(Form 3809-4a, page 2)



United States Department of the Interior

BUREAU OF LAND MANAGEMENT

Battle Mountain Field Office
50 Bastian Road
Battle Mountain, Nevada 89820
<http://www.nv.blm.gov/battlemountain>
(775) 635-4000 or bmfwweb@nv.blm.gov



C. Seilly 3/16/09
J. Hammond 3/19/09

In Reply Refer To:
3809 (NVB0630)
NVN-083245

MAR 23 2009

CERTIFIED MAIL NO. 7007 1490 0002 8943 8073 RETURN RECEIPT REQUESTED

DECISION

Eureka Moly, LLC
Attn: Brian Musser, Environmental Manager
2215 N. 5th Street
Elko, NV 89801

:
:
:
:

Surface Management

Determination of Required Financial Guarantee Amount

On March 13, 2009, Eureka Moly, LLC (EML) submitted a Notice extension and bond cost update for the Kobeh Central B Project, Bureau of Land Management (BLM) case file number NVN-083245. The project is located in MDB&M., T. 22 N., R. 51 E., sections 20, 21, 30 & 32.

Your Notice extension has not changed from the accepted 4.46-acres of disturbance, consisting of 3.70 acres of drill pads and 0.76 acres of roads and cross country travel. The Notice extension documentation has been reviewed and satisfies the requirements of 43 CFR §3809.333. The Notice is conditionally extended subject to meeting the financial guarantee requirements.

Amount of Financial Guarantee – This office has updated your reclamation cost estimate and has determined that the amount of **\$160,102** is sufficient to meet all anticipated reclamation requirements. The amount of the reclamation cost estimate was based on the operator complying with all applicable operating and reclamation requirements.

All line items contained in the approved reclamation cost estimate are not to be considered as the limits of financial guarantee expenditures in that respective category or task should forfeiture of the financial guarantee be necessary. The line items listed are solely for the purpose of arriving at a total amount for the financial guarantee. This total amount may be spent however the BLM deems necessary to implement the approved reclamation plan and does not represent a reclamation cost limit or constraint.

BLM's review of your proposed operations, determination that your Notice extension filing is complete, determination that your operations as proposed will not cause unnecessary or undue degradation, and decision concerning the amount of the required financial guarantee does not relieve you, the operator, of your responsibility to be in compliance with all applicable Federal, State and local laws and regulations, and to obtain all applicable Federal, State and local authorizations and permits. You are responsible for preventing any unnecessary or undue degradation of public lands and resources, and for reclaiming all lands disturbed by your operations.

Required Financial Guarantee – Within 60 days of receipt of this Decision, submit an acceptable financial guarantee in the amount of **\$160,102** to the Bureau of Land Management, Branch of Minerals Adjudication, P.O. Box 12000, Reno, NV 89520-0006. **Failure to meet that condition will result in the Notice expiring immediately upon conclusion of the timeframe and all activities, other than reclamation, are unauthorized and must cease.**

The types of financial instruments that are acceptable to the BLM are found at 43 CFR 3809.555. Please contact the Branch of Minerals Adjudication at 775-861-6400 for further information on the adjudication of financial guarantees.

This decision does not constitute certification of ownership to any entity named in the Notice, recognition of the validity of any associated mining claims, or recognition of the economic feasibility of the proposed operations.

Term of Notice - Your Notice will remain in effect for 2 years from the date of this decision, unless you notify this office beforehand that operations have ceased and reclamation is complete. If you wish to conduct operations for another 2 years after the expiration date of your Notice, you must notify this office in writing on or before the expiration date as required by 43 CFR 3809.333.

Cultural Resources - If archaeological sites are damaged you could be assessed fines under the civil provisions of the Archaeological Resources Protection Act (see 43 CFR 7, parts 7.4, 7.14, 7.15 and 7.16). Therefore, it is recommended that you hire an archaeological contractor to do a cultural survey of the project area prior to beginning work. Pursuant 43 CFR 10.4(g) you must notify the authorized officer, Assistant Field Manager, Non Renewable Resources/Field Station Manager, by telephone, with written confirmation, immediately upon the discovery of human remains, funerary items, sacred objects, or objects of cultural patrimony. Further, pursuant to 43 CFR 10.4(c) and (d), you must stop activities in the immediate vicinity of the discovery and protect it from your activities for 30 days or until notified to proceed by the authorized officer.

Protection and Preservation of Public Land Survey System Monuments - As directed in 43 CFR 3809.420 – Surface Management - (b)(9) *Protection of survey monuments*, it is your responsibility to bear the cost of any necessary restoration or reestablishment activity of the affected monument(s). Correspondingly, in the course of any accepted surface disturbance activity when Public Land Survey System Monuments/Cadastral corners or accessories that may or have been subject to obliteration, destruction, or damage, it will be your responsibility to protect and preserve the monumentation. Further clarification can be found in Nevada BLM's Instruction Memorandum No. NV-2007-003 www.nv.blm.gov.

Guidelines for Operations Conducted Under a Notice - *The enclosed document provides additional stipulations concerning your notice.*

Appeal of the Decision Determining the Required Financial Guarantee Amount

If you do not agree and are adversely affected by this decision, you may request that the Nevada BLM State Director review this decision. If you request a State Director Review, the request must be received in the Nevada BLM State Office at P.O. Box 12000, Reno, NV 89520-0006, no later than 30 calendar days after you receive or have been notified of this decision. The request for State Director Review must be filed in accordance with the provisions in 43 CFR 3809.805. This decision will remain in effect while the State Director Review is pending, unless the State Director grants a Stay. If you request a Stay, you have the burden of proof to demonstrate that a Stay should be granted.

If the State Director does not make a decision on your request for review of this decision within 21 days of receipt of the request, you should consider the request declined and you may appeal this decision to the Interior Board of Land Appeals (IBLA). You may contact the BLM State Office to determine when BLM received the request for State Director Review. You have 30 days from the end of the 21-day period in which to file your Notice of Appeal with this office at 50 Bastian Road, Battle Mountain, NV 89820 which we will forward to IBLA.

If you wish to bypass a State Director Review, this decision may be appealed directly to the IBLA in accordance with the regulations at 43 CFR 3809.801 (a) (1). Your Notice of Appeal must be filed in this office within 30 days from receipt of this decision. As the appellant, you have the burden of showing that the decision appealed from is in error. Enclosed BLM Form 1842-1 contains further information on taking appeals to the IBLA.

Standards for Obtaining a Stay

Except as otherwise provided by law or other pertinent regulation, a petition for a stay of a decision pending appeal shall show sufficient justification based on the following standards:

1. The relative harm to the parties if the stay is granted or denied,
2. The likelihood of the appellant's success on the merits,
3. The likelihood of immediate and irreparable harm if the stay is not granted, and
4. Whether the public interest favors granting the stay.

If you have any questions concerning this reduction in the financial guarantee amount, please contact Casey Strickland, Environmental Protection specialist, at 775-635-4017 or at the above address.

/s/ Douglas W. Furtado

Douglas W. Furtado
Field Manager
Mount Lewis Field Office

Enclosures

cc: BLM Branch of Minerals Adjudication (NV923)

CSTRICKLAND:cs:03/19/2009:\\blm\dfs\nv\bm\pub\nonrenewable\minerals\letters\LETTERS
FINALIZED\NOTICE EXTENSIONS\2008 WO FORMAT\Eureka
Moly\2009_GeneralMoly_NVN_083245_KobehCentralB_2yrr.doc



IDAHO GENERAL Mines, Inc.

10 N Post Street, Suite 610
Spokane, WA 99201
Phone: 509 838 1213
Fax: 509-838-0457
Email: info@idahogeneralmines.com
Website: www.idahogeneralmines.com

RECEIVED-MAILROOM

MAR 28 PM 1:10

BUREAU OF LAND MANAGEMENT
BATTLE MOUNTAIN
FIELD OFFICE

March 26, 2007

Mr. Tom Seley
Bureau of Land Management
Battle Mountain Field Office
50 Bastian Road
Battle Mountain, Nevada 89820

RE: Kobeh Valley Central-B Well Field Drilling Notice

Dear Mr. Seley:

Idaho General Mines, Inc. (IGMI) is submitting the attached Notice and reclamation cost estimate for exploration drilling at the north end of Kobeh Valley, south of Roberts Mountain. The purpose of the drilling is to determine the viability of this area as a water supply source for the Mount Hope Mine. A total of four drill holes is included in the Notice. Of these four drill holes, up to four may be tested to determine potential production capacity and hydrologic properties. These holes would be equipped with locked surface casing, and would remain as "open holes" to facilitate testing. The drill holes that are not left open for testing would be cased and used as monitor wells for the duration of the Notice activities. The total disturbance for this Notice is 0.66 acres.

The reclamation cost estimate was prepared using the Notice_ModelFY2007 cost estimator, as requested by your office. Reclamation costs are estimated at \$70,600. Surety in this amount will be posted prior to initiation of activities under this Notice.

If you have any questions regarding this request, please contact me at 753-4988.

Sincerely,

Idaho General Mines, Inc.

Pat Rogers
Environmental Director

Attachment: Notice for Kobeh Central B

cc: Greg Ferdock, IGMI
Andy Russell, IGMI

Comments sent back
See Yellow ~
Pat Rogers hand.
delivered the revised
version on 4/10/2007
C3



United States Department of the Interior

BUREAU OF LAND MANAGEMENT
Battle Mountain Field Office
50 Bastian Road
Battle Mountain, Nevada 89820
<http://www.nv.blm.gov>



In Reply Refer To:
3809 (NV063)
NVN-083245
NNV-083246

MAR 30 2007

C. Croteau 3/30/07

CERTIFIED MAIL: 7006 2150 0000 0369 8045
Return Receipt Requested

Pat Rogers
Environmental Coordinator
Idaho General Mines, Inc.
455 8th St.
Elko, NV 89801

Dear Mr. Rogers:

On March 28, 2007, the Bureau of Land Management's (BLM) Battle Mountain Field Office received your Notices for the Central A Well and Central B Well Projects. The Notices have been assigned BLM case file number NVN-083246 and NVN-083245 respectively.

The submittal has been reviewed and the BLM has found it to be inadequate. In order for BLM to continue to process this notice, you will need to submit the following items:

Central A Well (NVN-083246)

- Claimant Information
- Corrected project acreage of disturbance. You propose 1.99 acres, but are only bonding for 1.68 acres as shown in the Reclamation Cost Estimate. If the acreage is 1.99, please provide an updated Reclamation Cost Estimate to show coverage for the disturbance.
- Updated map showing each site in a larger scale with more detailed fashion. With the maps you provided, we are unable to plot them on our agency maps for the specialists. Please include UTM coordinates.

Central B Well (NVN-083245)

- Claimant Information
- Corrected project acreage of disturbance. You propose 0.66 acres, but are only bonding for 0.45 acres as shown in the Reclamation Cost Estimate. If the acreage is 0.66, please provide an updated Reclamation Cost Estimate to show coverage for the disturbance.
- Updated map showing each site in a larger scale with more detailed fashion. With the maps you provided, we are unable to plot them on our agency maps for the specialists. Please include UTM coordinates.

Once this information is received in the office, the processing of these Notices will continue. Please note that the 15 day calendar will not start until the Notices are in complete order.

Questions and comments should be directed to Cory Crotteau at (775) 635-4192 or Steve Drummond at (775) 635-4160.

Sincerely,

Thomas J. Seley

Thomas J Seley
Assistant Field Manager
Nonrenewable Resources

CCROTTEAU:cc:03/30/2007:S:\PUBLIC\nonrenewable\minerals\letters\LETTERS
FINALIZED\NOTICESWHATTODO\IGMI_NVN_083245_083246_MoreinfoToStart_March2
007.doc



United States Department of the Interior

BUREAU OF LAND MANAGEMENT
Nevada State Office
P.O. Box 12000 (1340 Financial Blvd.)
Reno, Nevada 89520-0006
<http://www.blm.gov/nv/st/en.html>



In Reply Refer To:
3809 (NV923z)

DECISION

Obligor:	:		
Eureka Moly, LLC	:	BLM Bond Number:	NVB000912
1726 Cole Blvd., Suite 115	:	Bond Amount Accepted:	\$817,331
Lakewood, CO 80401	:		

Obligation Under Statewide Bond Adjusted

The BLM Nevada State Office (NSO) currently holds BLM bond number NVB000912 with Eureka Moly, LLC, as principal, in the amount of \$817,331. The bond provides coverage for surface reclamation activities on operations conducted by Eureka Moly, LLC on lands in Nevada under the regulations at 43 CFR 3809.

On March 23, 2009, the BLM Mount Lewis Field Office reduced the reclamation cost estimates on N-83245, the Kobeh Valley Central-B Project, and N-83246, the Kobeh Valley Central-A Project to \$160,102 and \$84,383, respectively. Effective the date of this Decision, the reduced amounts of \$160,102 and \$84,383 are obligated to BLM bond number NVB000912 for N-83245 and N-83246, respectively.

Effective the date of this Decision, notices are obligated to the bond as shown in the table below.

Operations Number	Operations Name	Bond Amount Obligated
N-80914	Mount Hope East	\$ 92,570
N-81485	Tails #2	\$ 90,066
N-81811	Kobeh Valley Central-C	\$ 152,879
N-83120	Mount Hope West	\$ 114,685
N-83245	Kobeh Valley Central-B	\$ 160,102
N-83246	Kobeh Valley Central-A	\$ 84,383
Total Obligations Under NVB000912		\$ 694,685

Considering the bond amounts accepted and obligated, \$122,646 remains available under BLM bond number NVB000912 for new operations or amendments to existing operations.

If you have any questions, please call Lacy Trapp at 775-861-6599, or send electronic mail to Lacy_Trapp@nv.blm.gov.

Elaine M. Lewis
Atanda Clark
~~For~~ Chief, Branch of Minerals Adjudication

cc:
General Moly Inc.
Attn: Brian Musser
455 8th Street
Elko, NV 89801

NV060 (CStrickland)
NV920 (SMurrellwright)



United States Department of the Interior

BUREAU OF LAND MANAGEMENT

Nevada State Office
P.O. Box 12000 (1340 Financial Blvd.)
Reno, Nevada 89520-0006
<http://www.nv.blm.gov>



In Reply Refer To:
3809 (NV923z)

APR 03 2008

DECISION

Obligor/Operator:
Eureka Moly, LLC
1726 Cole Blvd., Suite 115
Lakewood, CO 80401

:
: BLM Bond Number: NVB000912
: Bond Amount Accepted: \$576,309
:
:

Obligor:
General Moly Inc.
N 10 Post St., Suite 610
Spokane, WA 99201

:
: BLM Bond Number: NVB000567
: Bond Amount: \$466,309
:
:

Statewide Bond Accepted

Rider Returned

Change of Operator Recognized

Period of Liability Under BLM Bond Number NVB000567 Terminated
Obligation Under Statewide Bond Increased

The BLM Nevada State Office (NSO) currently holds BLM bond number NVB000567 with General Moly, Inc., as principal, in the amount of \$466,309. The bond provides coverage for surface reclamation activities on operations conducted on lands in Nevada by General Moly, Inc. under the regulations at 43 CFR 3809.

The NSO received correspondence from General Moly Inc. stating funds held by the BLM for BLM bond number NVB000567 should be transferred to a statewide bond submitted on March 13, 2008, by Eureka Moly, LLC. On March 17, 2007, the NSO received a corrected statewide bond with Eureka Moly, LLC, as principal, in the amount of \$576,309 and certified funds in the amount of \$110,000. The bond has been examined, found satisfactory, and is accepted effective March 17, 2008. The bond has been assigned BLM bond number NVB000912 and will provide coverage for surface reclamation activities on operations conducted on lands in Nevada by Eureka Moly, LLC under the regulations at 43 CFR 3809.

BLM bond number NVB000912 will be maintained by the NSO. Termination of the liability under the bond will be permitted only after the NSO is satisfied that there is no outstanding liability on the bond or satisfactory replacement bond coverage is furnished.

On March 13, 2008, the NSO received a rider from General Moly Inc. increasing BLM bond number NVB000567 to \$576,309. This is unnecessary in light of the acceptance of statewide BLM bond number NVB000912. Therefore, we enclose the bond rider herewith and return it to General Moly Inc. for disposition.

On March 19, 2008, the NSO received a copy of a Change of Operator, Form 3809-5, proposing to change the operator on the operations in the table below from General Moly Inc. to Eureka Moly, LLC. The BLM Battle Mountain Field Office (BMFO) approved the change of operator pending Eureka Moly, LLC providing satisfactory bonding for surface reclamation. By this Decision, satisfactory bonding for the operations shown in the table below has been accepted from Eureka Moly, LLC.

Since BLM bond number NVB000912, replaced NVB000567 from General Moly Inc., the period of liability under BLM bond number NVB000567 is terminated effective March 17, 2008, and bond coverage continues uninterrupted under BLM bond number NVB000912.

Please note that termination of the period of liability under BLM bond number NVB000567 does not relieve General Moly Inc. of any obligation arising out of the operations, applicable law, or regulations for any liabilities that may have accrued prior to the date the period of liability terminated.

On March 12, 2008, the BLM BMFO increased the reclamation cost estimate on notice N-83245, the Central B Well Project, to \$206,629. And, on March 13, 2008, the BLM BMFO increased the reclamation cost estimate on notice N-83246, the Central A Well Project, to \$90,943.

Effective the date of this Decision, notices are obligated to the bond as shown in the table below.

Operations Number	Operations Name	Bond Amount Obligated
N-80914	Mount Hope East	\$ 92,570
N-81485	Mount Hope	\$ 39,127
N-81811	Mount Hope	\$ 28,309
N-83120	Mount Hope West	\$ 114,685
N-83245	Central "B" Well	\$ 206,629
N-83246	Central "A" Well	\$ 90,943
Total Obligations Under NVB000912		\$ 572,263

Considering the bond amounts accepted and obligated, \$4,046 remains available under BLM bond number NVB000912 for new operations or amendments to existing operations.

If you have any questions, please call Lacy Trapp at 775-861-6599; send facsimile to 775-861-6710; write to the attention of NV923z at the address on the letterhead; or send electronic mail to Lacy_Trapp@nv.blm.gov.

ATANDA CLARK

Atanda Clark
Chief, Branch of Minerals Adjudication

Enclosure
As Stated Above to General Moly Inc.

cc:
General Moly Inc.
Attn: Brian Musser
455 8th Street
Elko, NV 89801

NV060 (SDrummond, LMarine)
NV923 (CDragon)



IDAHO GENERAL Mines, Inc.

455 8th St
Elko, NV 89801
Phone: 775.753.4988
Fax: 775.753.7722
Email: info@idahogeneralmine.com
Website: www.idahogeneralmine.com

RECEIVED-MAILROOM

2007 APR 10 PM 1:31

BUREAU OF LAND MANAGEMENT
BATTLE MOUNTAIN
FIELD OFFICE

April 9, 2007

Mr. Tom Seley
Bureau of Land Management
Battle Mountain Field Office
50 Bastian Road
Battle Mountain, Nevada 89820

RE: Kobeh Valley Central-B Well Field Drilling Notice – NVN-083245, Revised
3809 (NV063)

Dear Mr. Seley:

Idaho General Mines, Inc. (IGMI) has revised the Notice for the Kobeh Valley Central-B Well Field Drilling, submitted Marcy 26, 2007. Revisions were made to include the information requested by the Bureau of Land Management (BLM) in the letter dated March 30, 2007. I have indicated below how the comments were addressed. Please consider the attached Notice as a replacement to the March 26, 2007 version.

BLM requested that IGMI provide the following items:

- *Claimant Information*

Appendix A of the Notice has been modified to clarify the claimant information. IGMI is specifically identified as the claimant in the Table in Appendix A (previously the IGMI claims were identified in the table by a column heading "IGMI CLAIM"). The IGMI claims cover the lands that on which the drill holes are located. In addition, BLM administered lands with mineral rights that have been claimed by others will be crossed via overland travel to access the drill sites. The claimant of these claims has also been identified in Appendix A.

- *Corrected project acreage of disturbance. You proposed 0.66 acres, but are only bonding for 0.45 acres as shown in the Reclamation Cost Estimate. If the acreage is 0.66, please provide an updated Reclamation Cost Estimate to show coverage for the disturbance.*

IGMI used the Notice_ModelFY2007 cost estimator for calculating reclamation costs as instructed by BLM. However, the model is based on several assumptions and does not allow the user to input site-specific data. Specifically, the proposed pad dimensions are 50 ft x 120 ft, or 0.14 acres. The model assumes (see footnote Number 3) that drill sites are 30 ft x 70 ft, and calculates a total disturbance of 0.06 acres per pad (accounting for slope). The only user input allowed with respect to this calculation is the number of drill sites. IGMI is proposing four drill sites, with a total acreage of 0.56 acres, whereas, the model calculates the acreage to be 0.24 acres

for drill sites. The sums are calculated as separate disturbance by the model, but are included within the footprint of the drill pads in the IGMI notice. This adds 0.10 additional acres to the model-calculated drill site disturbance, for a total of 0.45 acres, versus the proposed 0.56 acres.

To adjust the reclamation cost estimate to ensure that this difference in acreage was included in the bond, the number of holes was increased (temporarily) in the model to 7 holes, which resulted in an acreage calculation of 0.71 acres (i.e., just slightly more than the 0.66 acres that IGMI proposes). This increased the total reclamation cost by \$591, and the administrative costs by \$134, or a total of \$725. Therefore, IGMI is proposing to add this \$725 to the reclamation cost that was calculated by the model for the four drill sites (\$70,898) for a total of **\$71,625**.

- *Updated map show each site in a larger scale with more detailed fashion. With the maps you provided, we are unable to plot them on our agency maps for the specialists. Please include the UTM coordinates.*

IGMI has added additional maps at 1:12,000 scale for the drill hole locations and overland travel routes. The UTM coordinates have been provided in Appendix A.

Reclamation costs are estimated at **\$71,625**. Surety in this amount will be posted prior to initiation of activities under this Notice. If you have any questions regarding this request, please contact me at 753-4988.

Sincerely,

Idaho General Mines, Inc.



Pat Rogers
Environmental Director

Attachment: Notice for Kobeh Central B

cc: Greg Ferdock, IGMI
Andy Russell, IGMI

Kobeh Valley Central-B Well Field Drilling Notice



Idaho General Mines, Inc.

**10 N Post Street, Suite 610
Spokane, Washington 99201**

**SRK Consulting (U.S.), Inc.
1250 Lamoille Highway, Suite 520,
Elko, Nevada, USA 89801**

**Tel: 775.753.4151 Fax: 775.753.4152
Web site: www.srk.com**

SRK Project Number 157510

April 2007

TABLE OF CONTENTS

1	CLAIMANT/OPERATOR INFORMATION.....	1
2	NOTICE ACTIVITIES.....	1
2.1	ACTIVITY DESCRIPTION, MAP AND SCHEDULE OF ACTIVITIES	1
2.2	MEASURES TO PREVENT UNNECESSARY AND UNDUE DEGRADATION	3
2.2.1	Surface Disturbance	3
2.2.2	Cultural Resources	3
2.2.3	Surface and Ground Water.....	3
2.2.4	Solid Waste.....	3
2.2.5	Air Quality.....	4
2.2.6	Fire Protection	4
2.2.7	Noxious Weeds.....	4
3	RECLAMATION PLAN.....	4
3.1	RE-CONTOURING, SEEDBED PREPARATION, AND SEEDING	4
4	RECLAMATION COSTS	4

Tables

Table 1: Well Site Legal Descriptions	1
Table 2: Proposed Disturbance.....	2

Figures

- Figure 1: Location Map
Figure 2: Project Area for Notice – Kobeh Central B
Figure 3: Kobeh Central B Well Site Detail
Figure 4: Kobeh Central B Well Site Detail

Appendices

- Appendix A – Claims List
Appendix B – Kobeh Central B Notice Reclamation Cost Estimate

IN THE SUPREME COURT OF THE STATE OF NEVADA

EUREKA COUNTY, A POLITICAL
SUBDIVISION OF THE STATE OF
NEVADA; KENNETH F. BENSON,
INDIVIDUALLY; DIAMOND CATTLE
COMPANY, LLC, A NEVADA LIMITED
LIABILITY COMPANY; AND MICHEL
AND MARGARET ANN ETCHEVERRY
FAMILY, LP, A NEVADA REGISTERED
FOREIGN LIMITED PARTNERSHIP,

Case No. 61324

District Court Case Nos.
CV 1108-15; CV 1108-156;
CV 1108-157; CV 1112-164;
CV 1112-165; CV 1202-170

Electronically Filed
Dec 27 2012 10:11 a.m.
Tracie K. Lindeman
Clerk of Supreme Court

Appellants,

vs.

THE STATE OF NEVADA STATE
ENGINEER; THE STATE OF NEVADA
DIVISION OF WATER RESOURCES;
AND KOBEH VALLEY RANCH, LLC, A
NEVADA LIMITED LIABILITY
COMPANY,

Respondents.

JOINT APPENDIX
Volume 21

KAREN A. PETERSON, NSB 366
kpeterson@allisonmackenzie.com
JENNIFER MAHE, NSB 9620
jmahe@allisonmackenzie.com
DAWN ELLERBROCK, NSB 7327
dellerbrock@allisonmackenzie.com
ALLISON, MacKENZIE, PAVLAKIS,
WRIGHT & FAGAN, LTD.

402 North Division Street
Carson City, NV 89703
(775) 687-0202

and

THEODORE BEUTEL, NSB 5222
tbeutel@eurekanv.org
Eureka County District Attorney
702 South Main Street
P.O. Box 190
Eureka, NV 89316
(775) 237-5315

Attorneys for Appellant,
EUREKA COUNTY

**CHRONOLOGICAL APPENDIX TO
APPEAL FROM JUDGMENT**

<u>DOCUMENT</u>	<u>DATE</u>	<u>VOL</u>	<u>JA NO.</u>
Petition for Judicial Review	08/08/2011	1	01-06
Notice of Verified Petition for Writ of Prohibition, Complaint and Petition for Judicial Review	08/10/2011	1	07- 08
Verified Petition for Writ of Prohibition, Complaint and Petition for Judicial Review	08/10/2011	1	09-59
Summons and Proof of Service, Kobeh Valley Ranch, LLC	08/11/2011	1	60-62
Summons and Proof of Service, Jason King	08/11/2011	1	63-65
Affidavit of Service by Certified Mail	08/11/2011	1	66-68
Notice of Petition for Judicial Review	08/11/2011	1	69-117
Summons and Proof of Service, Kobeh Valley Ranch, LLC	08/15/2011	1	118-120
Summons and Proof of Service, Jason King	08/15/2011	1	121-123
Summons and Proof of Service, The State of Nevada	08/17/2011	1	124-128
First Additional Summons and Proof of Service, State Engineer, Division of Water Resources	08/17/2011	1	129-133
Order Allowing Intervention of Kobeh Valley Ranch, LLC, to Intervene as a Respondent	09/14/2011	1	134-135

<u>DOCUMENT</u>	<u>DATE</u>	<u>VOL</u>	<u>JA NO.</u>
Partial Motion to Dismiss, Notice of Intent to Defend	09/14/2011	1	136-140
Order Allowing Intervention of Kobeh Valley Ranch, LLC, as a Party Respondent	09/26/2011	1	141-142
Answer to Verified Petition for Writ of Prohibition, Complaint and Petition for Judicial Review by Kobeh Valley Ranch, LLC	09/28/2011	1	143-149
Answer to Petition for Judicial Review by Kobeh Valley Ranch, LLC	09/29/2011	1	150-154
Answer to Petition for Judicial Review by Kobeh Valley Ranch, LLC	09/29/2011	1	155-160
Order Directing the Consolidation of Action CV1108-156 and Action No. CV1108-157 with Action CV1108-155	10/26/2011	1	161-162
Summary of Record on Appeal	10/27/2011	2-26	163-5026
Request for and Points and Authorities in Support of Issuance of Writ of Prohibition and in Opposition to Motion to Dismiss	11/10/2011	27	5027-5052
Order Setting Briefing Schedule	12/02/2011	27	5053-5055
Reply in Support of Partial Motion to Dismiss and Opposition to Request for Writ of Prohibition	12/15/2011	27	5056-5061

<u>DOCUMENT</u>	<u>DATE</u>	<u>VOL</u>	<u>JA NO.</u>
Kobeh Valley Ranch's Reply to Conley/Morrison's Request for and Points and Authorities in Support of Issuance of Writ of Prohibition and in Opposition to Motion to Dismiss	12/15/2011	27	5062-5083
Kobeh Valley Ranch's Joinder in the State of Nevada and Jason King's Partial Motion to Dismiss	12/15/2011	27	5084-5086
Petition for Judicial Review	12/29/2011	27	5087-5091
Petition for Judicial Review	12/30/2011	27	5092-5097
Summons and Proof of Service, The State of Nevada	01/11/2012	27	5098-5100
First Additional Summons and Proof of Service, State Engineer, Division of Water Resources	01/11/2012	27	5101-5103
First Amended Petition for Judicial Review	01/12/2012	27	5104-5111
Opening Brief of Conley Land & Livestock, LLC and Lloyd Morrison	01/13/2012	27	5112-5133
Petitioners Kenneth F. Benson, Diamond Cattle Company, LLC, and Michel and Margaret Ann Etcheverry Family LP's Opening Brief	01/13/2012	27	5134-5177
Eureka County's Opening Brief	01/13/2012	27	5178-5243
Eureka County's Summary of Record on Appeal - CV1112-0164	01/13/2012	28	5244-5420
Eureka County's Supplemental Summary of Record on Appeal - CV1108-155	01/13/2012	29-30	5421-5701

<u>DOCUMENT</u>	<u>DATE</u>	<u>VOL</u>	<u>JA NO.</u>
Order Granting Extension	01/26/2012	31	5702-5703
Answer to Petition for Judicial Review	01/30/2012	31	5704-5710
Answer to First Amended Petition for Judicial Review	01/30/2012	31	5711-5717
Supplemental Petition for Judicial Review	01/31/2012	31	5718-5720
Petition for Judicial Review	02/01/2012	31	5721-5727
Summary of Record on Appeal	02/03/2012	31	5728-5733
Record on Appeal, Vol. I, Bates Stamped Pages 1-216	02/03/2012	31	5734-5950
Record on Appeal, Vol. II, Bates Stamped Pages 217-421	02/03/2012	32	5951-6156
Record on Appeal, Vol. III, Bates Stamped Pages 422-661	02/03/2012	33	6157-6397
Answer to Petition to Judicial Review	02/23/2012	34	6398-6403
Answering Brief	02/24/2012	34	6404-6447
Respondent Kobeh Valley Ranch, LLC's Answering Brief	02/24/2012	34	6448-6518
Reply Brief of Conley Land & Livestock, LLC and Lloyd Morrison	03/28/2012	34	6519-6541
Petitioners Kenneth F. Benson, Diamond Cattle Company, LLC, and Michel and Margaret Ann Etcheverry Family LP's Reply Brief	03/28/2012	34	6542-6565
Eureka County's Reply Brief	03/28/2012	34	6566-6638

<u>DOCUMENT</u>	<u>DATE</u>	<u>VOL</u>	<u>JA NO.</u>
Transcript for Petition for Judicial Review	04/03/2012	35	6639-6779
Corrected Answering Brief	04/05/2012	35	6780-6822
Findings of Fact, Conclusions of Law, and Order Denying Petitions for Judicial Review	06/13/2012	36	6823-6881
Notice of Entry of Findings of Fact, Conclusions of Law, and Order Denying Petitions for Judicial Review	06/18/2012	36	6882-6944
Notice of Appeal	07/10/2012	36	6945-6949
Petitioners Benson, Diamond Cattle Co., and Etcheverry Family LP's Notice of Appeal	07/12/2012	36	6950-6951
Excerpts from Transcript of Proceedings	10/13/2008	36	6952-6964

**ALPHABETICAL APPENDIX TO
APPEAL FROM JUDGMENT**

<u>DOCUMENT</u>	<u>DATE</u>	<u>VOL</u>	<u>JA NO.</u>
Affidavit of Service by Certified Mail	08/11/2011	1	66-68
Answer to Verified Petition for Writ of Prohibition, Complaint and Petition for Judicial Review by Kobeh Valley Ranch, LLC	09/28/2011	1	143-149
Answer to Petition for Judicial Review by Kobeh Valley Ranch, LLC	09/29/2011	1	150-154
Answer to Petition for Judicial Review by Kobeh Valley Ranch, LLC	09/29/2011	1	155-160
Answer to Petition for Judicial Review	01/30/2012	31	5704-5710
Answer to First Amended Petition for Judicial Review	01/30/2012	31	5711-5717
Answer to Petition to Judicial Review	02/23/2012	34	6398-6403
Answering Brief	02/24/2012	34	6404-6447
Corrected Answering Brief	04/05/2012	35	6780-6822
Eureka County's Supplemental Summary of Record on Appeal - CV1108-155	01/13/2012	29-30	5421-5701
Eureka County's Summary of Record on Appeal - CV1112-0164	01/13/2012	28	5244-5420
Eureka County's Opening Brief	01/13/2012	27	5178-5243
Eureka County's Reply Brief	03/28/2012	34	6566-6638
Excerpts from Transcript of Proceedings	10/13/2008	36	6952-6964

<u>DOCUMENT</u>	<u>DATE</u>	<u>VOL</u>	<u>JA NO.</u>
Findings of Fact, Conclusions of Law, and Order Denying Petitions for Judicial Review	06/13/2012	36	6823-6881
First Additional Summons and Proof of Service, State Engineer, Division of Water Resources	08/17/2011	1	129-133
First Additional Summons and Proof of Service, State Engineer, Division of Water Resources	01/11/2012	27	5101-5103
First Amended Petition for Judicial Review	01/12/2012	27	5104-5111
Kobeh Valley Ranch's Reply to Conley/Morrison's Request for and Points and Authorities in Support of Issuance of Writ of Prohibition and in Opposition to Motion to Dismiss	12/15/2011	27	5062-5083
Kobeh Valley Ranch's Joinder in the State of Nevada and Jason King's Partial Motion to Dismiss	12/15/2011	27	5084-5086
Notice of Verified Petition for Writ of Prohibition, Complaint and Petition for Judicial Review	08/10/2011	1	07- 08
Notice of Petition for Judicial Review	08/11/2011	1	69-117
Notice of Entry of Findings of Fact, Conclusions of Law, and Order Denying Petitions for Judicial Review	06/18/2012	36	6882-6944
Notice of Appeal	07/10/2012	36	6945-6949
Opening Brief of Conley Land & Livestock, LLC and Lloyd Morrison	01/13/2012	27	5112-5133

<u>DOCUMENT</u>	<u>DATE</u>	<u>VOL</u>	<u>JA NO.</u>
Order Allowing Intervention of Kobreh Valley Ranch, LLC, to Intervene as a Respondent	09/14/2011	1	134-135
Order Allowing Intervention of Kobreh Valley Ranch, LLC, as a Party Respondent	09/26/2011	1	141-142
Order Directing the Consolidation of Action CV1108-156 and Action No. CV1108-157 with Action CV1108-155	10/26/2011	1	161-162
Order Setting Briefing Schedule	12/02/2011	27	5053-5055
Order Granting Extension	01/26/2012	31	5702-5703
Partial Motion to Dismiss, Notice of Intent to Defend	09/14/2011	1	136-140
Petition for Judicial Review	08/08/2011	1	01-06
Petition for Judicial Review	12/29/2011	27	5087-5091
Petition for Judicial Review	12/30/2011	27	5092-5097
Petition for Judicial Review	02/01/2012	31	5721-5727
Petitioners Kenneth F. Benson, Diamond Cattle Company, LLC, and Michel and Margaret Ann Etcheverry Family LP's Opening Brief	01/13/2012	27	5134-5177
Petitioners Kenneth F. Benson, Diamond Cattle Company, LLC, and Michel and Margaret Ann Etcheverry Family LP's Reply Brief	03/28/2012	34	6542-6565
Petitioners Benson, Diamond Cattle Co., and Etcheverry Family LP's Notice of Appeal	07/12/2012	36	6950-6951

<u>DOCUMENT</u>	<u>DATE</u>	<u>VOL</u>	<u>JA NO.</u>
Record on Appeal, Vol. II, Bates Stamped Pages 217-421	02/03/2012	32	5951-6156
Record on Appeal, Vol. I, Bates Stamped Pages 1-216	02/03/2012	31	5734-5950
Record on Appeal, Vol. III, Bates Stamped Pages 422-661	02/03/2012	33	6157-6397
Reply in Support of Partial Motion to Dismiss and Opposition to Request for Writ of Prohibition	12/15/2011	27	5056-5061
Reply Brief of Conley Land & Livestock, LLC and Lloyd Morrison	03/28/2012	34	6519-6541
Request for and Points and Authorities in Support of Issuance of Writ of Prohibition and in Opposition to Motion to Dismiss	11/10/2011	27	5027-5052
Respondent Kobeh Valley Ranch, LLC's Answering Brief	02/24/2012	34	6448-6518
Summary of Record on Appeal	10/27/2011	2-26	163-5026
Summary of Record on Appeal	02/03/2012	31	5728-5733
Summons and Proof of Service, Kobeh Valley Ranch, LLC	08/11/2011	1	60-62
Summons and Proof of Service, Jason King	08/11/2011	1	63-65
Summons and Proof of Service, Jason King	08/15/2011	1	121-123
Summons and Proof of Service, Kobeh Valley Ranch, LLC	08/15/2011	1	118-120

<u>DOCUMENT</u>	<u>DATE</u>	<u>VOL</u>	<u>JA NO.</u>
Summons and Proof of Service, The State of Nevada	08/17/2011	1	124-128
Summons and Proof of Service, The State of Nevada	01/11/2012	27	5098-5100
Supplemental Petition for Judicial Review	01/31/2012	31	5718-5720
Transcript for Petition for Judicial Review	04/03/2012	35	6639-6779
Verified Petition for Writ of Prohibition, Complaint and Petition for Judicial Review	08/10/2011	1	09-59

CERTIFICATE OF APPENDIX (NRAP 30(g)(1))

In compliance with NRAP 30(g)(1) I hereby certify that this Appendix consists of true and correct copies of the papers in the District Court file.

DATED: December 21, 2012.

/s/ KAREN A. PETERSON

KAREN A. PETERSON, NSB #366
ALLISON, MacKENZIE, PAVLAKIS,
WRIGHT & FAGAN, LTD.
P.O. Box 646
Carson City, NV 89702

Attorneys for Appellant,
EUREKA COUNTY

APPENDIX B
MOUNT HOPE MINE PROJECT
NOTICE RECLAMATION BOND ESTIMATE

NEVADA STANDARDIZED BOND CALCULATION

Version Beta 3b

Project Name: Mount Hope Notice

Date of Submittal: October 25, 2005

Select One: ☒ Notice or Sm Exploration Plan ☐ Lg Exploration Plan ☐ Mine Plan of Operations

Select One: ☒ Private Land ☐ Public or Public/Private

File Name: Mount Hope Notice_102505_Beta 3b.xls

NEVADA STANDARDIZED RECLAMATION BOND CALCULATION - SUMMARY

Mount Hope Notice

October 25, 2005

Mount Hope Notice_102505_ Beta 3b.xls

A. Earthwork/Recontouring	Labor ⁽¹⁾	Equipment ⁽²⁾	Materials	Total
Exploration	\$648	\$1,023	\$484	\$2,155
Roads	\$851	\$2,049	\$0	\$2,899
Drill Hole Abandonment	\$2,189	\$4,125	\$148	\$6,462
Pits	\$0	\$0	\$0	\$0
Underground Openings	\$0	\$0	\$0	\$0
Process Ponds	\$0	\$0	\$0	\$0
Heaps	\$0	\$0	\$0	\$0
Waste Rock Dumps	\$0	\$0	\$0	\$0
Landfills	\$0	\$0	\$0	\$0
Tailings	\$0	\$0	\$0	\$0
Foundation & Buildings Areas	\$0	\$0	\$0	\$0
Yards, Etc.	\$24	\$66	N/A	\$89
Drainage & Sediment Control	\$0	\$0	\$0	\$0
Miscellaneous	\$0	\$0	\$0	\$0
Other**				\$0
Subtotal	\$3,711	\$7,262	\$632	\$11,605
Mobilization/Demobilization		\$1,500		\$1,500
Subtotal "A"	\$3,711	\$8,762	\$632	\$13,105
B. Revegetation/Stabilization	Labor ⁽¹⁾	Equipment ⁽²⁾	Materials	Total
Exploration	\$7	\$6	\$25	\$38
Roads	\$195	\$165	\$750	\$1,110
Drill Hole Abandonment				N/A
Pits				N/A
Underground Openings	\$0	\$0	\$0	\$0
Process Ponds	\$0	\$0	\$0	\$0
Heaps				\$0
Waste Rock Dumps				\$0
Landfills				\$0
Tailings				\$0
Foundation & Buildings Areas	\$0	\$0	\$0	\$0
Yards, Etc.	\$33	\$26	\$125	\$186
Drainage & Sediment Control				\$0
Other**				\$0
Subtotal "B"	\$235	\$199	\$900	\$1,334
C. Detoxification/Water Treatment/Disposal of Wastes**	Labor ⁽¹⁾	Equipment ⁽²⁾	Materials	Total
Interim Fluid Management				\$0
Closure Plan Development				\$0
Process Ponds/Sludge				\$0
Heaps				\$0
Dumps (Waste & Landfill)				\$0
Tailings				\$0
Surplus Water Disposal				\$0
Monitoring				\$0
Other**				\$0
Subtotal "C"	\$0	\$0	\$0	\$0
D. Structure, Equipment and Facility Removal	Labor ⁽¹⁾	Equipment ⁽²⁾	Materials	Total
Foundation & Buildings Areas	\$0	\$0	\$0	\$0
Other Demolition	\$0	\$0	\$0	\$0
Equipment Removal	\$0	\$0	\$0	\$0
Fence Removal				\$0
Pipe & Culvert Removal				\$0
Powerline Removal				\$0
Transformer Removal				\$0
Rip-rap, rock lining, gabions				\$0
Other Misc. Costs				\$0
Other**				\$0
Subtotal "D"	\$0	\$0	\$0	\$0
E. Monitoring	Labor ⁽¹⁾	Equipment ⁽²⁾	Materials	Total
Reclamation Monitoring and Maintenance	\$2,733	\$271	\$138	\$3,141
Ground and Surface Water Monitoring	\$0	\$0	\$0	\$0
Subtotal "E"	\$2,733	\$271	\$138	\$3,141
F. Construction Management & Support	Labor	Equipment ⁽²⁾	Materials	Total
Construction Management	\$416	\$104	N/A	\$520
Road Maintenance	\$0	\$0	N/A	\$0
Other**				\$0
Subtotal "F"	\$416	\$104	\$0	\$520
G. Operational & Maintenance Costs	Labor ⁽¹⁾	Equipment ⁽²⁾	Materials ⁽³⁾	Total
Subtotal A through F	\$7,095	\$9,336	\$1,670	\$18,100

** Other Operator supplied costs - additional documentation required

NEVADA STANDARDIZED RECLAMATION BOND CALCULATION - SUMMARY

Mount Hope Notice

October 25, 2005

Mount Hope Notice_102505_ Beta 3b.xls

Indirect Costs					
1. Engineering, Design and Construction (ED&C) Plan (7)					N/A
2. Contingency (8)					N/A
3. Insurance (9)		\$106			\$106
4. Bond (10)					
5. Contractor Profit (11)					\$1,810
6. BLM Contract Administration (12)					\$1,810
7. BLM Indirect Cost (13)					\$380
Subtotal Add-On Costs					\$4,107
Grand Total					\$22,207
Administrative Cost Rates (%)					
1. Engineering, Design and Construction (ED&C) Plan (7)	<= \$1MM	> \$1M <= \$25M	> \$25M		Notice Level
Variable Rate	8%	6%	4%		0%
2. Contingency (8)	<= \$0.5M	> \$0.5M <= \$5M	> \$5M <= \$50M	> \$50M	Notice Level
Variable Rate	10%	8%	6%	4%	0%
3. Insurance (9)	1.5%	of labor costs			
4. Bond (10)	3.0%	of the O&M costs if O&M costs are >\$100,000			
5. Contractor Profit (11)	10.0%	of the O&M costs			
6. BLM Contract Administration (12)	<= \$1M	> \$1M <= \$25M	> \$25M		
Variable Rate	10%	8%	6%		
7. BLM Indirect Cost (13)		21% of BLM Contract Administration			

RECLAMATION COST ESTIMATION SUMMARY SHEET FOOTNOTES

1. Federal construction contracts require Davis-Bacon wage rates for contracts over \$2,000. Wage rate estimates may include base pay, payroll loading, overhead and profit. To avoid double counting of any of the identified administrative costs the operator must itemize the components of their labor cost estimates or provide BLM with a signed statement, under penalty of USC 1001, that identifies what specific administrative costs are included in the quoted hourly rate.
2. The reclamation cost estimate must include the estimated plugging cost of at least one drill hole for each active drill rig in the project area. Where the submitted Notice or approved Plan of Operations calls for drill holes to be plugged, but doesn't specifically require the drill holes be plugged before the drill rig has been moved from the drill pad, the reclamation cost estimate must include the plugging cost for those drill holes. For all drill holes and wells scheduled to be left open, the estimated plugging cost must be included in the reclamation cost estimate. Where the approved Plan of Operations proposes immediate mining through an area where the drilling is to occur, and the cost of the post-mining reclamation is included in the reclamation cost estimate, the cost estimate does not need to include the plugging costs for those drill holes.
3. Miscellaneous items should be itemized on accompanying worksheets.
4. Fluid management should be calculated only when mineral processing activities are involved. Fluid management represents the costs of maintaining proper fluid management to prevent overflow of solution ponds through premature cessation or abandonment of operations. Calculate a minimum six month direct cost estimate which includes power, supplies, equipment, labor and maintenance.
5. Handling of hazardous materials includes the cost of decontaminating, neutralizing, disposing, treating and/or isolating all hazardous materials used, produced, or stored on the site.
6. Any mitigation measures required in the Plan of Operations must be included in the reclamation cost estimate. Mitigation may include measures to avoid, minimize, rectify and reduce or eliminate the impact, or compensate for the impact.
7. Engineering, design and construction (ED&C) plans are often necessary to provide details on the reclamation needed to contract for the required work. To estimate the cost to develop an ED&C plan use 4-8% of the O&M cost. Calculate the ED&C cost as a percentage of the O&M cost as follows: up to and including \$1 million, use 8%; over \$1 million to \$25 million, use 6%; and over \$25 million, use 4%. Inclusion of a line item for the development of an ED&C plan may not be necessary for small operations, such as notice-level exploration. With small, uncomplicated reclamation efforts contracting may be able to proceed without developing an ED&C plan. [EO&C is automatically eliminated if "Notice" is selected on the Property Information Sheet]
8. A contingency cost is included in the reclamation cost estimation to cover unforeseen cost elements. Calculate the contingency cost as a percentage of the O&M cost as follows: up to and including \$500,000, use 10%; over \$500,000 to \$5 million, use 8%; over \$5 million to \$50 million, use 6%; and greater than \$50 million, use 4%. As with the ED&C cost, inclusion of a contingency cost may not be necessary for small operations, such as notice-level exploration.
9. Insurance premiums are calculated at 1.5% of the total labor costs. Enter the premium amount if liability insurance is not included in the itemized unit costs.
10. Federal construction contracts exceeding \$100,000 require both a performance and a payment bond (Miller Act, 40 USC 270et seq.). Each bond premium is figured at 1.5% of the O&M cost. Enter the sum of both premium costs on this line.
11. For Federal construction contracts, use 10% of estimated O&M cost for the contractor's profit.
12. To estimate the contract administration cost, use 5 to 10% of the operational and maintenance (O&M) cost. Calculate the contract administration cost as a percentage of the O&M cost as follows: up to and including \$1 million, use 10%; over \$1 million to \$25 million, use 8%; and greater than \$25 million use 6%.
13. BLM's indirect cost rate is 21% of BLM's contract administration costs.

Bond Calculation Exploration

Project Name: Mount Hope Notice-Notice or Exploration
Date of Submission: October 23, 2005
File Name: Mount Hope Notice_102505_Beta 3b.xls

Exploration - Cost Summary				
	Labor	Equipment	Materials	Totals
Hole Abandonment Costs	\$397	\$565	\$484	\$1,446
Trench Backfilling Costs	\$281	\$458	\$718	\$1,457
Subtotal Earthworks	\$678	\$1,023	\$1,202	\$2,903
Trench Revegetation Costs	\$7	\$5	\$25	\$37
Subtotal Revegetation	\$7	\$5	\$25	\$37
TOTALS	\$685	\$1,028	\$1,227	\$2,940

Color Code Key	User Input - Direct Input	Global Input
	User Input - Pull Down List	Pull Down Selection
	Program Constant (can override)	Alternate Input
	Program Calculated Value	Locked Cell - Formula or Reference

Exploration Drilling Hole Abandonment - User Input									
Hole Plugging									
	Description	Hole Type	Diameter (in)	Total Number of Holes	Max Holes Open at One Time	Average Depth of Hole ¹ (ft)	Depth to Water (ft)		
1	8 conventional holes	Reverse Circ	5.0	8	1	1,500	300		
2	2 electrode core holes	Core	3.5	2	1	2,300	1,334		
3									
4									
5									
6									
7									
8									
9									
10									
11									
12									
13									
14									
15									
16									
17									
18									
19									
20									

Notes:
1 If core holes are pre-drilled, use length of hole below pre-drilled length

Bond Calculation Exploration

Project Name: Mount Hope Notice-Notice of Exploration
Date of Submission: October 25, 2005
File Name: Mount Hope Notice_102505_Beta 3b.xls

Exploration Trenches - User Input

Description (required)	Trench Parameters				Revegetation			
	Trench Length ft.	Trench Depth ft.	Trench Bottom Width ft.	Trench Side Slope Coproces	Dredging Material (select)	Grading Sheet (select)	Seed Mix (select)	Facilities (select)
1 20' met pit - 1' open at 2' line	19	16	4.3	80	0.8	Small	Mix 1	
2 19' sample	245	13	4.3	60	1.2	Small	Mix 1	
3								
4								
5								
6								
7								
8								
9								
10								
11								
12								
13								
14								
15								
16								
17								
18								
19								
20								

Exploration Drillhole Abandonment

Description	Volume of depth cf	Hole Plugging Material ¹⁾	Grout Volume ²⁾	Grout Volume ³⁾	Cuttings Volume ⁴⁾	Top Soil Volume ⁵⁾	Plugging Labor Cost \$	Plugging Equipment Cost \$	Plugging Material Cost \$	Top Soil Material Cost \$	Total Cost \$
1 5 contamination holes	0.17	Grout + Cuttings	11.7	0.8	0.2	0.2	\$239	\$418	\$307	\$42	\$1,026
2 3 GeoHydro cone holes	0.07	Grout + Cuttings	4	3	0.1	0.1	\$148	\$147	\$90	\$31	\$416
3											
4											
5											
6											
7											
8											
9											
10											
11											
12											
13											
14											
15											
16											
17											
18											
19											
20											
			15			0	\$287	\$555	\$331	\$35	\$1,435

Notes

- 1 Assumes grout backfill from bottom of hole to 50' above static water level, up to 20' from top of hole
- 2 Assumes 25% loss to formation for grout backfill
- 3 Assumes top 20 feet of hole is plugged with cement

**Bond Calculation
Exploration**

Project Name: Mount Hope Notice- Notice or Exploration
Date of Submittal: October 25, 2005
File Name: Mount Hope Notice_102505_Data 3b.xls

10/25/2005

Page 6

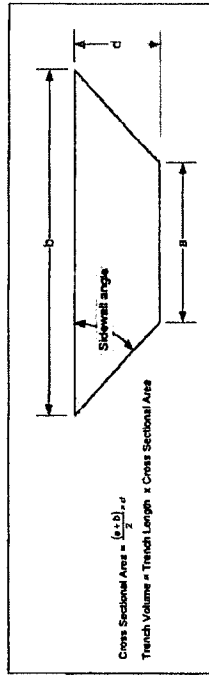
Exploration

Bond Calculation Exploration

Project Name: Mount Hope Notice- Notice or Exploration
Date of Submittal: October 25, 2005
File Name: Mount Hope Notice_102505_Beta 3b.xls

Exploration Trenches - Calculations

Exploration Trench Volume Calculation



Dozing & Ripping/Scarifying Calculations

Dozing: Dozing distance = 1/2 trench length or 600 ft (max push) whichever is less
 Assumes full push (grade correction factor = 1)

Exploration Trenches - Backfill/Regrading Costs

Description (required)	Trench Backfill Volume (LCI Volume x 0.95)	Dozer Push Distance	Dozer Productivity	Operator	Dozing Material	Job Efficiency	Corrected Hourly Productivity	Total Dozer Hours	Trench Backfill Labor Cost	Trench Backfill Equipment Cost	Total Trench Backfill Cost
1 40' incl site - 1' open at 1' line	140	8	4.407	0.75	0.80	0.83	2.237	1	\$52	\$92	\$144
2 18' slopes	1,819	143	474	0.75	1.20	0.83	354	4	\$208	\$365	\$575
3											
4											
5											
6											
7											
8											
9											
10											
11											
12											
13											
14											
15											
16											
17											
18											
19											
20	1,989							5	\$281	\$458	\$739

Bond Calculation
Exploration

Project Name: Mount Hope Notice- Notice or Exploration
Date of Submittal: October 25, 2005
File Name: Mount Hope Notice_102505_Beta 3b.xls

Exploration / Notice- Notice or Exploration					
Exploration / Notice- Notice or Exploration					
Description (required)	Surface Area acres	Revegetation Labor Cost \$	Revegetation Equipment Cost \$	Revegetation Material Cost \$	Total Revegetation Cost \$
1 400 seed mix - 1 operator at 1 time	0.0	\$0	\$0	\$0	\$0
2 150 seed mix - 1 operator at 1 time	0.1	\$7	\$0	\$25	\$32
3					
4					
5					
6					
7					
8					
9					
10					
11					
12					
13					
14					
15					
16					
17					
18					
19					
20	0	\$7	\$0	\$25	\$32

Bond Calculation Roads

Project Name: Mount Hope Notice- Notice or Exploration
Date of Submittal: October 25, 2005
File Name: Mount Hope Notice_102505_Beta 3b.xls

Roads - Cost Summary

	Labor	Equipment	Materials	Totals
Grading Costs	\$851	\$2,049	N/A	\$2,899
Cover Placement Cost			N/A	\$0
Ripping Cost			N/A	\$0
Subtotal Earthworks	\$851	\$2,049		\$2,899
Revegetation Cost	\$195	\$165	\$750	\$1,110
TOTALS	\$1,046	\$2,214	\$750	\$4,009

Color Code Key

User Input - Direct Input	Direct Input
User Input - Pull Down List	Pull Down Selection
Program Constant (can override)	Alternate Input
Program Calculated Value	Locked Cell - Formula or Reference

Roads - User Input

You must fill in ALL green cells and relevant blue cells in this section for each road

Physical Characteristics

	Description (required)	Original Slope % grade	Ungraded Slope H:1V	Cut Slope degrees	Road Width ft.	Road Length ft.	Slope Replacement Percent %	Regrade Volume (if calculated elsewhere) CY	Disturbed Area (if calculated elsewhere) acres	Growth Media Thickness in	Distance to Growth Media Stockpile ft.	Slope from Road to Stockpile % grade
1	Test Pit 1-40 pads (20'x40')	20	1.3	60	20	1,960	100%			6	25	0
2	Boreholes 1-3 pads (21' x 33')	20	1.3	60	23	99	100%			6	16	0
3	Roads <30%	20	1.3	60	13	1,460	100%			6	0	0
4	Roads >30%	40	1.3	60	13	1,853	100%			6	0	0
5	Contamination hole pads <30%	20	1.3	60	30	280	10%			6	15	0
6	Contamination hole pads >30%	40	1.3	60	30	70	100%			6	15	0
7	Geohydro pads (30' x 70') <30%	20	1.3	60	30	140	100%			6	15	0
8	Geohydro pads (30' x 70') >30%	40	1.3	60	30	710	100%			6	15	0
9	Monitoring hole pads (6.30'x70')	20	1.3	60	30	420	100%			6	15	0
10												
11												
12												
13												
14												
15												
16												
17												
18												
19												
20												

Bond Calculation Roads

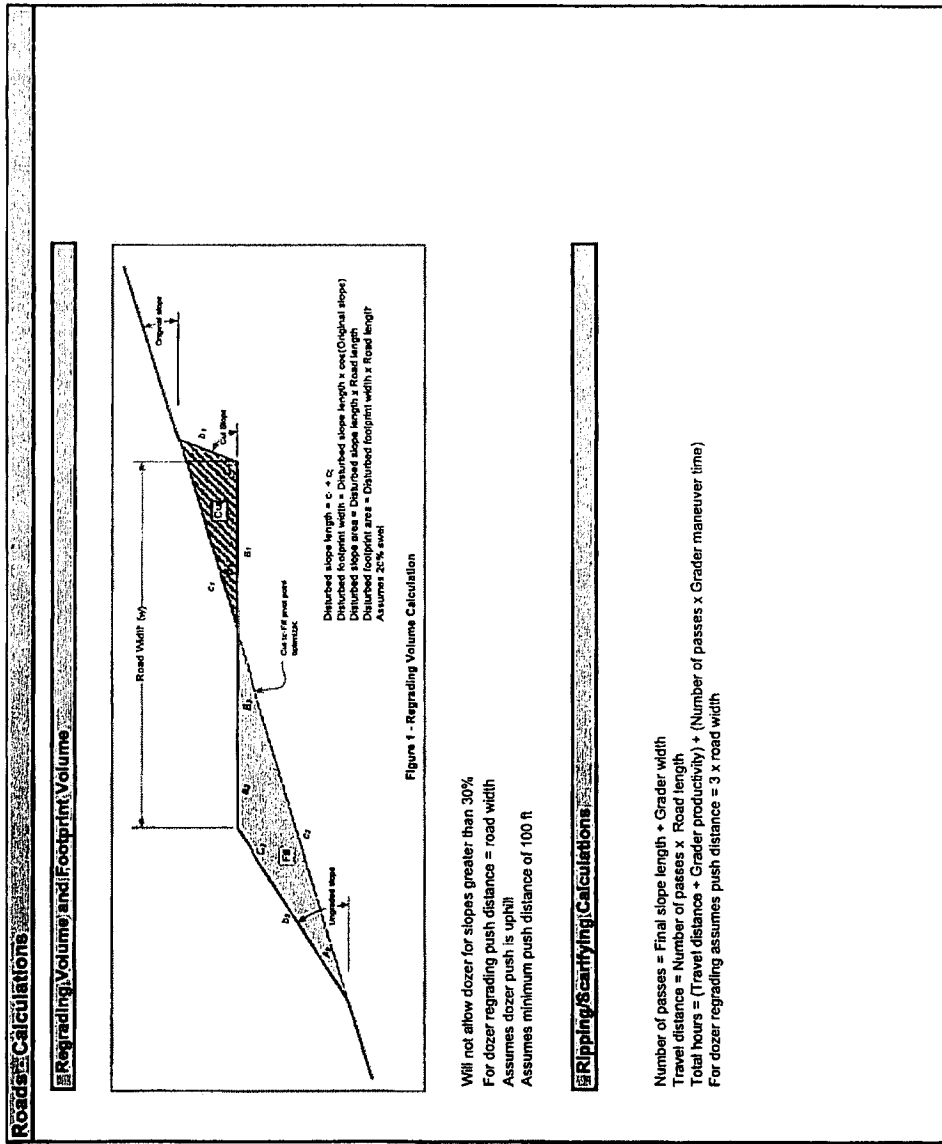
Project Name: Mount Hope Notice- Notice or Exploration
Date of Submittal: October 25, 2005
File Name: Mount Hope Notice_102505_Beta 3b.xls

Roads - User Input (cont.)											
You must fill in ALL green cells and relevant blue cells in this section for each road											
Description (required)	Grading				Cover			Revegetation			
	Dozing Material (select)	Cut Material Type (select)	Recontouring Equipment Fleet ⁽¹⁾ (select)	No. of Excavators if grade > 30% (select)	Cover Material Type (select)	Cover Placement Equipment Fleet (select)	Seed Mix (select)	Mulch (select)	Fertilizer (select)	Scarifying/ Ripping? (select)	Ripping Fleet (select)
1 Test Pit 1-40 pads (20'x40')	1.2	Basalt	optimize				Mix 1			No	
2 Boreholes 1-3 pads (23' x 33')	1.2	Basalt	optimize				Mix 1			No	
3 Roads < 30%	1.2	Basalt	optimize				Mix 1			No	
4 Roads > 30%	1.2	Basalt	optimize	1			Mix 1			No	
5 Condemnation hole pads < 30%	1.2	Basalt	optimize				Mix 1			No	
6 Condemnation hole pads > 30%	1.2	Basalt	optimize	1			Mix 1			No	
7 Geohydro pads (30' x 70') < 30%	1.2	Basalt	optimize				Mix 1			No	
8 Geohydro pads (30' x 70') > 30%	1.2	Basalt	optimize	1			Mix 1			No	
9 Monitoring hole pads (8x30'x70')	1.2	Basalt	optimize				Mix 1			No	
10											
11											
12											
13											
14											
15											
16											
17											
18											
19											
20											

(1) If original slope > 30% "optimize" option will only select among the excavator options.

Bond Calculation Roads

Project Name: Mount Hope Notice- Notice or Exploration
Date of Submittal: October 25, 2005
File Name: Mount Hope Notice_102505_Beta 3b.xls



Bond Calculation Roads

Project Name: Mount Hope Notice- Notice or Exploration
Date of Submittal: October 25, 2005
File Name: Mount Hope Notice_102505_Beta 3b.xls

Roads: Regrading Costs									
Description (required)	Regrading Volume cy	Recontouring Fleet	Fleet Productivity cy/hr	Total Fleet Hours hr	Total Labor Cost \$	Total Equipment Cost \$	Total Materials Cost \$	Total Regrading Cost \$	
1 Test Pit 1-40 pads (20'x49')	983	Lg Dozer	469	2	\$110	\$402		\$512	
2 Boreholes 1-3 pads (23' x 33')	66	Sm Excavator	229	0	\$0	\$0		\$0	
3 Roads<30%	309	Med Dozer	338	1	\$52	\$149		\$201	
4 Roads>30%	1,040	Med Excavator	299	3	\$318	\$693		\$1,011	
5 Condemnation hole pads<30%	32	Sm Excavator	229	0	\$0	\$0		\$0	
6 Condemnation holes pads>30%	209	Lg Excavator	360	1	\$106	\$150		\$256	
7 Geohydro pads (30' x 70')>30%	158	Med Excavator	299	0	\$0	\$0		\$0	
8 Geohydro pads (30' x 70')>30%	628	Med Excavator	299	2	\$212	\$462		\$674	
9 Monitoring hole pads (6x30'x70')	474	Lg Dozer	469	1	\$52	\$192		\$244	
10									
11									
12									
13									
14									
15									
16									
17									
18									
19									
20									
	3,899			10	\$851	\$2,049	0	\$2,899	

Roads: Growth Media Costs									
Description (required)	Growth Media Volume cy	Growth Media Replacement Fleet	Fleet Productivity BCY/hr	Number of Trucks/ Scrapers	Total Fleet Hours	Total Labor Cost \$	Total Equipment Cost \$	Total Topping Cost \$	
1 Test Pit 1-40 pads (20'x49')	919	0							
2 Boreholes 1-3 pads (23' x 33')	53	0							
3 Roads<30%	445	0							
4 Roads>30%	799	0							
5 Condemnation hole pads<30%	197	0							
6 Condemnation holes pads>30%	70	0							
7 Geohydro pads (30' x 70')>30%	98	0							
8 Geohydro pads (30' x 70')>30%	209	0							
9 Monitoring hole pads (6x30'x70')	295	0							
10									
11									
12									
13									
14									
15									
16									
17									
18									
19									
20									
	3,085								

\$0
\$0
\$0

Bond Calculation Roads

Project Name: Mount Hope Notice- Notice or Exploration
Date of Submittal: October 25, 2005
File Name: Mount Hope Notice_102505_Beta 3b.xls

Roads Scarifying/Revegetation Costs											
	Description (required)	Surface Area acres	Final Slope Length ft	Ripping Hours hrs	Ripping Equipment Cost \$	Ripping Labor Costs \$	Total Ripping Costs \$	Revegetation Labor Cost \$	Revegetation Equipment Cost \$	Revegetation Material Cost \$	Total Revegetation Cost \$
1	Test Pit 1-40 pads (20'x49')	1.0	25					\$65	\$55	\$250	\$370
2	Boreholes 1-3 pads (23' x 33')	0.0	29					\$0	\$0	\$0	\$0
3	Roads<30%	1.0	18					\$65	\$55	\$250	\$370
4	Roads>30%	1.0	23					\$65	\$55	\$250	\$370
5	Condemnation hole pads< 30%	0	38					\$0	\$0	\$0	\$0
6	Condemnation holes pads >30%	0	54					\$0	\$0	\$0	\$0
7	Geohydro pads (30' x 70')<30%	0	38					\$0	\$0	\$0	\$0
8	Geohydro pads (30' x 70')>30%	0	54					\$0	\$0	\$0	\$0
9	Monitoring hole pads (6x30'x70')	0	38					\$0	\$0	\$0	\$0
10											
11											
12											
13											
14											
15											
16											
17											
18											
19											
20		3						\$195	\$165	\$750	\$1,110

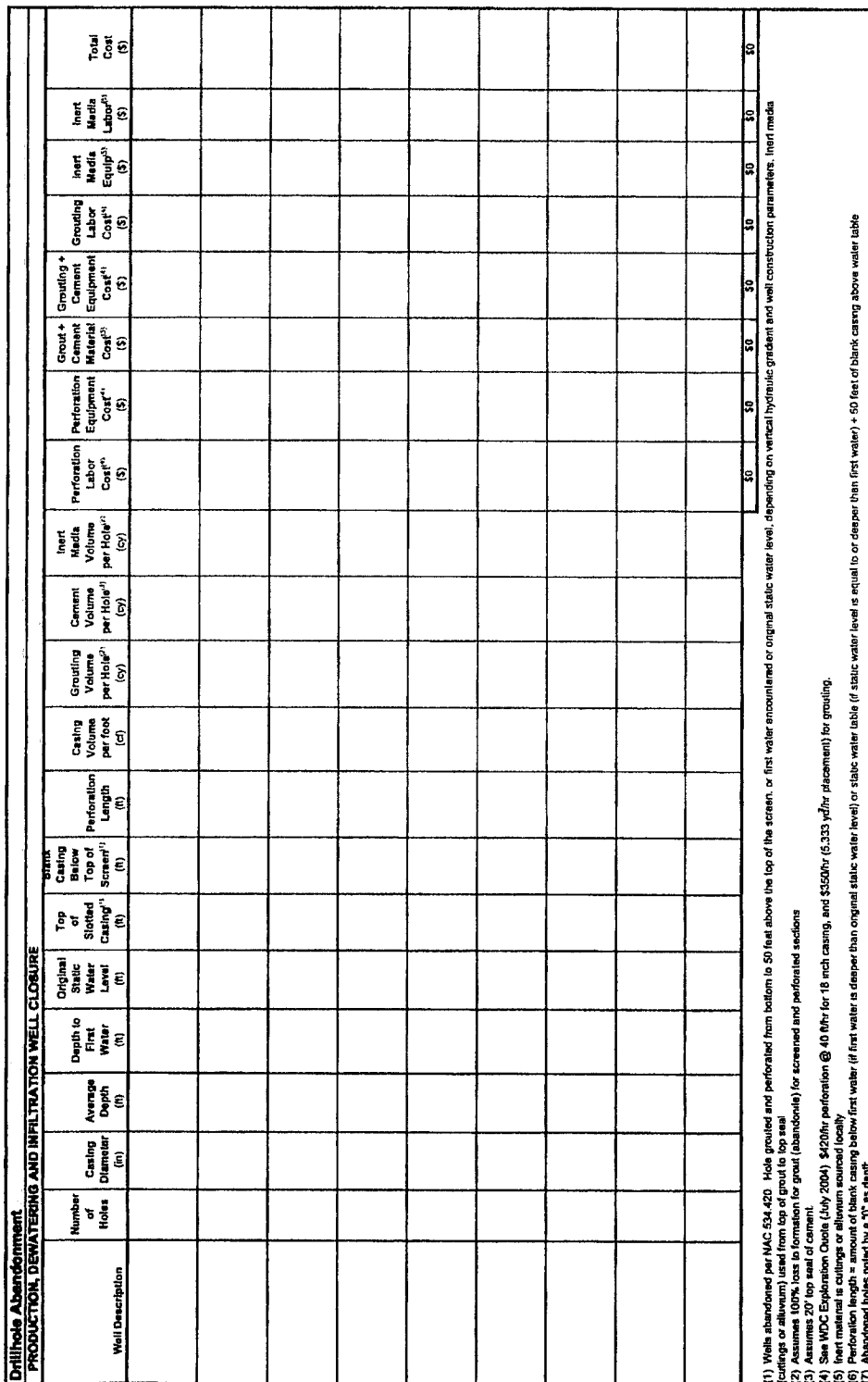
Bond Calculation Drill Hole Abandonment

Project Name: Mount Hope Notice-Notice or Exploration
Date of Submital: October 25, 2005
File Name: Mount Hope Notice_102505_Beta 3b.xls

Drill Hole Abandonment				
	Labor	Equipment	Materials	Totals
Production, Dewatering, Infiltration Wells	\$0	\$0	\$0	\$0
Monitoring Wells	\$2,193	\$4,125	\$148	\$6,462
TOTALS	\$2,193	\$4,125	\$148	\$6,462

Color Code Key	Direct Input
User Input - Direct Input	Pull Down Selection
User Input - Pull Down List	Alternate Input
Program Constant (can override)	Selected Cell - Formula or Reference
Program Calculated Value	

Project Name: Mount Hope Notice- Notice or Exploration
Date of Submittal: October 25, 2005
File Name: Mount Hope Notice_102505_Beta 3b.xls



(11) Wells abandoned per NAC 534.420. Hole grouted and perforated from bottom to 50 feet above the top of the screen, or first water encountered or original static water level, depending on vertical hydraulic gradient and well construction parameters. Inert media

cuttings or slurry) used from top of grout to top seal

13) Assumes 20' top seal of cement.

5) Inert material is culittins or alluvium sourced locally

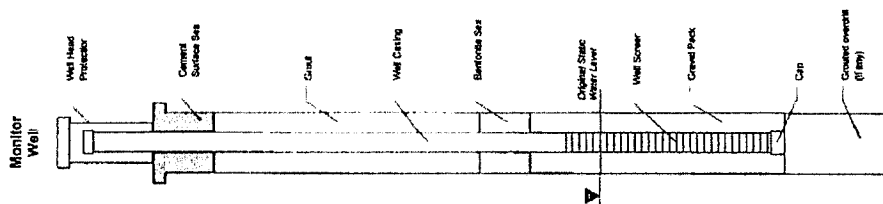
(6) Perforation length = amount of blank casing below first perforation

(7) Abandoned holes noted by a "0" as depth

Project Name: Mount Hope Notice- Notice or Exploration
Date of Submittal: October 25, 2005
File Name: Mount Hope Notice_102505_Beta 3b.xls

MONITORING WELLS														
Well Description	Number of Holes	Casing Diameter (in)	Average Depth (ft)	Top of Screen ⁽¹⁾ (ft)	Casing Vol per Foot (cf)	GROUT Volume/ Well ⁽²⁾ (cy)	Cement Volume per Hole ⁽³⁾ (cy)	Backfill Volume per Hole ⁽⁴⁾ (cy)	GROUT Cement Material Cost ⁽⁵⁾ (\$)	GROUT Cement Equipment Cost ⁽⁶⁾ (\$)	GROUT Labor Cost ⁽⁷⁾ (\$)	GROUT Material Equipment Cost ⁽⁸⁾ (\$)	NET Material Labor Cost ⁽⁹⁾ (\$)	Total Cost (\$)
W-13	1	2.5	758	856	0.03	0.2	0.03	0.74	\$14	\$375	\$199	\$51	\$175	\$588
W-14	1	2.5	1100	1000	0.03	0.2	0.03	1.17	\$14	\$375	\$199	\$51	\$175	\$588
W-1	1	2.5	758	856	0.03	0.2	0.03	0.74	\$14	\$375	\$199	\$51	\$175	\$588
W-2	1	2.5	870	870	0.03	0.2	0.03	0.94	\$14	\$375	\$199	\$51	\$175	\$588
W-3	1	2.5	870	870	0.03	0.2	0.03	0.94	\$14	\$375	\$199	\$51	\$175	\$588
W-4	1	2.5	892	492	0.03	0.2	0.03	0.53	\$14	\$375	\$199	\$51	\$175	\$588
W-5	1	2.5	892	492	0.03	0.2	0.03	0.53	\$14	\$375	\$199	\$51	\$175	\$588
W-6	1	2.5	892	492	0.03	0.2	0.03	0.53	\$14	\$375	\$199	\$51	\$175	\$588
W-7	1	2.5	88	78	0.03	0.1	0.03	0.01	\$12	\$375	\$199	\$51	\$175	\$588
W-8	1	2.5	88	78	0.03	0.1	0.03	0.01	\$12	\$375	\$199	\$51	\$175	\$588
W-9	1	2.5	88	78	0.03	0.1	0.03	0.01	\$12	\$375	\$199	\$51	\$175	\$588
W-10	1	2.5	88	78	0.03	0.1	0.03	0.01	\$12	\$375	\$199	\$51	\$175	\$588
W-11	1	2.5	88	78	0.03	0.1	0.03	0.01	\$12	\$375	\$199	\$51	\$175	\$588
W-12	1	2.5	88	78	0.03	0.1	0.03	0.01	\$12	\$375	\$199	\$51	\$175	\$588
W-13	1	2.5	88	78	0.03	0.1	0.03	0.01	\$12	\$375	\$199	\$51	\$175	\$588
W-14	1	2.5	88	78	0.03	0.1	0.03	0.01	\$12	\$375	\$199	\$51	\$175	\$588
W-15	1	2.5	88	78	0.03	0.1	0.03	0.01	\$12	\$375	\$199	\$51	\$175	\$588
W-16	1	2.5	88	78	0.03	0.1	0.03	0.01	\$12	\$375	\$199	\$51	\$175	\$588
W-17	1	2.5	88	78	0.03	0.1	0.03	0.01	\$12	\$375	\$199	\$51	\$175	\$588
W-18	1	2.5	88	78	0.03	0.1	0.03	0.01	\$12	\$375	\$199	\$51	\$175	\$588
W-19	1	2.5	88	78	0.03	0.1	0.03	0.01	\$12	\$375	\$199	\$51	\$175	\$588
W-20	1	2.5	88	78	0.03	0.1	0.03	0.01	\$12	\$375	\$199	\$51	\$175	\$588
W-21	1	2.5	88	78	0.03	0.1	0.03	0.01	\$12	\$375	\$199	\$51	\$175	\$588
W-22	1	2.5	88	78	0.03	0.1	0.03	0.01	\$12	\$375	\$199	\$51	\$175	\$588
W-23	1	2.5	88	78	0.03	0.1	0.03	0.01	\$12	\$375	\$199	\$51	\$175	\$588
W-24	1	2.5	88	78	0.03	0.1	0.03	0.01	\$12	\$375	\$199	\$51	\$175	\$588
W-25	1	2.5	88	78	0.03	0.1	0.03	0.01	\$12	\$375	\$199	\$51	\$175	\$588
W-26	1	2.5	88	78	0.03	0.1	0.03	0.01	\$12	\$375	\$199	\$51	\$175	\$588
W-27	1	2.5	88	78	0.03	0.1	0.03	0.01	\$12	\$375	\$199	\$51	\$175	\$588
W-28	1	2.5	88	78	0.03	0.1	0.03	0.01	\$12	\$375	\$199	\$51	\$175	\$588
W-29	1	2.5	88	78	0.03	0.1	0.03	0.01	\$12	\$375	\$199	\$51	\$175	\$588
W-30	1	2.5	88	78	0.03	0.1	0.03	0.01	\$12	\$375	\$199	\$51	\$175	\$588
W-31	1	2.5	88	78	0.03	0.1	0.03	0.01	\$12	\$375	\$199	\$51	\$175	\$588
W-32	1	2.5	88	78	0.03	0.1	0.03	0.01	\$12	\$375	\$199	\$51	\$175	\$588
W-33	1	2.5	88	78	0.03	0.1	0.03	0.01	\$12	\$375	\$199	\$51	\$175	\$588
W-34	1	2.5	88	78	0.03	0.1	0.03	0.01	\$12	\$375	\$199	\$51	\$175	\$588
W-35	1	2.5	88	78	0.03	0.1	0.03	0.01	\$12	\$375	\$199	\$51	\$175	\$588
W-36	1	2.5	88	78	0.03	0.1	0.03	0.01	\$12	\$375	\$199	\$51	\$175	\$588
W-37	1	2.5	88	78	0.03	0.1	0.03	0.01	\$12	\$375	\$199	\$51	\$175	\$588
W-38	1	2.5	88	78	0.03	0.1	0.03	0.01	\$12	\$375	\$199	\$51	\$175	\$588
W-39	1	2.5	88	78	0.03	0.1	0.03	0.01	\$12	\$375	\$199	\$51	\$175	\$588
W-40	1	2.5	88	78	0.03	0.1	0.03	0.01	\$12	\$375	\$199	\$51	\$175	\$588
W-41	1	2.5	88	78	0.03	0.1	0.03	0.01	\$12	\$375	\$199	\$51	\$175	\$588
W-42	1	2.5	88	78	0.03	0.1	0.03	0.01	\$12	\$375	\$199	\$51	\$175	\$588
W-43	1	2.5	88	78	0.03	0.1	0.03	0.01	\$12	\$375	\$199	\$51	\$175	\$588
W-44	1	2.5	88	78	0.03	0.1	0.03	0.01	\$12	\$375	\$199	\$51	\$175	\$588
W-45	1	2.5	88	78	0.03	0.1	0.03	0.01	\$12	\$375	\$199	\$51	\$175	\$588
W-46	1	2.5	88	78	0.03	0.1	0.03	0.01	\$12	\$375	\$199	\$51	\$175	\$588
W-47	1	2.5	88	78	0.03	0.1	0.03	0.01	\$12	\$375	\$199	\$51	\$175	\$588
W-48	1	2.5	88	78	0.03	0.1	0.03	0.01	\$12	\$375	\$199	\$51	\$175	\$588
W-49	1	2.5	88	78	0.03	0.1	0.03	0.01	\$12	\$375	\$199	\$51	\$175	\$588
W-50	1	2.5	88	78	0.03	0.1	0.03	0.01	\$12	\$375	\$199	\$51	\$175	\$588
W-51	1	2.5	88	78	0.03	0.1	0.03	0.01	\$12	\$375	\$199	\$51	\$175	\$588
W-52	1	2.5	88	78	0.03	0.1	0.03	0.01	\$12	\$375	\$199	\$51	\$175	\$588
W-53	1	2.5	88	78	0.03	0.1	0.03	0.01	\$12	\$375	\$199	\$51	\$175	\$588
W-54	1	2.5	88	78	0.03	0.1	0.03	0.01	\$12	\$375	\$199	\$51	\$175	\$588
W-55	1	2.5	88	78	0.03	0.1	0.03	0.01	\$12	\$375	\$199	\$51	\$175	\$588
W-56	1	2.5	88	78	0.03	0.1	0.03	0.01	\$12	\$375	\$199	\$51	\$175	\$588
W-57	1	2.5	88	78	0.03	0.1	0.03	0.01	\$12	\$375	\$199	\$51	\$175	\$588
W-58	1	2.5	88	78	0.03	0.1	0.03	0.01	\$12	\$375	\$199	\$51	\$175	\$588
W-59	1	2.5	88	78	0.03	0.1	0.03	0.01	\$12	\$375	\$199	\$51	\$175	\$588
W-60	1	2.5	88	78	0.03	0.1	0.03	0.01	\$12	\$375	\$199	\$51	\$175	\$588
W-61	1	2.5	88	78	0.03	0.1	0.03	0.01	\$12	\$375	\$199	\$51	\$175	\$588
W-62	1	2.5	88	78	0.03	0.1	0.03	0.01	\$12	\$375	\$199	\$51	\$175	\$588
W-63	1	2.5	88	78	0.03	0.1	0.03	0.01	\$12	\$375	\$199	\$51	\$175	\$588
W-64	1	2.5	88	78	0.03	0.1	0.03	0.01	\$12	\$375	\$199	\$51	\$175	\$588
W-65	1	2.5	88	78	0.03	0.1	0.03	0.01	\$12	\$375	\$199	\$51	\$175	\$588
W-66	1	2.5	88	78	0.03	0.1	0.03	0.01	\$12	\$375	\$199	\$51	\$175	\$588
W-67	1	2.5	88	78	0.03	0.1	0.03	0.01	\$12	\$375	\$199	\$51	\$175	\$588
W-68	1	2.5	88	78	0.03	0.1	0.03	0.01	\$12	\$375	\$199	\$51	\$175	\$588
W-69	1	2.5	88	78	0.03	0.1	0.03	0.01	\$12	\$375	\$199	\$51	\$175	\$588
W-70	1	2.5	88	78	0.03	0.1	0.03	0.01	\$12	\$375	\$199	\$51	\$175	\$588
W-71	1	2.5	88	78	0.03	0.1	0.03	0.01	\$12	\$375	\$199	\$51	\$175	\$588
W-72	1	2.5	88	78	0.03	0.1	0.03	0.01	\$12	\$375	\$199	\$51	\$175	\$588
W-73	1	2.5	88	78	0.03	0.1	0.03	0.01	\$12	\$375	\$199	\$51	\$175	\$588
W-74	1	2.5	88	78	0.03	0.1	0.03	0.01	\$12	\$375	\$199	\$51	\$175	\$588
W-75	1	2.5	88	78	0.03	0.1	0.03	0.01	\$12	\$375	\$199	\$51	\$175	\$588
W-76	1	2.5	88	78	0.03	0.1	0.03	0.01	\$12	\$375	\$199	\$51	\$175	\$588
W-77	1	2.5	88	78	0.03	0.1	0.03	0.01	\$12	\$375	\$199	\$51	\$175	\$588
W-78	1	2.5	88	78	0.03	0.1	0.03	0.01	\$12	\$375	\$199	\$51	\$175	\$588
W-79	1	2.5	88	78	0.03	0.1	0.03	0.01	\$12	\$375	\$199	\$51	\$175	\$588
W-80	1	2.5	88	78	0.03	0.1	0.03	0.01	\$12	\$375	\$199	\$51	\$175	\$588
W-81	1	2.5	88	78	0.03	0.1	0.03	0.01	\$12	\$375	\$199	\$51	\$175	\$588
W-82	1	2.5	88	78	0.03	0.1	0.03	0.01	\$12	\$375	\$199	\$51	\$175	\$588
W-83	1	2.5	88	78	0.03	0.1	0.03	0.01	\$12	\$375	\$199	\$51	\$175	\$588
W-84	1	2.5	88	78	0.03	0.1	0.03	0.01	\$12	\$375	\$199	\$51	\$175	\$588
W-85	1	2.5	88	78	0.03	0.1	0.03	0.01	\$12	\$375	\$199	\$51	\$175	\$588
W-86	1	2.5	88	78	0.03	0.1	0.03	0.01	\$12	\$375	\$199	\$51	\$175	\$588
W-87	1	2.5	88	78	0.03	0.1	0.03	0.01	\$12	\$375	\$199	\$51	\$175	\$588
W-88	1	2.5	88	78	0.03	0.1	0.03	0.01	\$12	\$375	\$199	\$51	\$175	\$588
W-89	1	2.5	88	78	0.03	0.1	0.03	0.01	\$12	\$375	\$199	\$51	\$175	\$588
W-90	1	2.5	88	78	0.03	0.1	0.03	0.01	\$12	\$375	\$199	\$51	\$175	\$588
W-91	1	2.5	88	78	0.03	0.1	0.03	0.01	\$12	\$375	\$199	\$51	\$175	\$588
W-92	1	2.5	88	78	0.03	0.1	0.03	0.01	\$12	\$375	\$199	\$51	\$175	\$588
W-93	1	2.5	88	78	0.03	0.1	0.03	0.01	\$12	\$375	\$199	\$51	\$175	\$588
W-94	1	2.5	88	78	0.03	0.1	0.03	0.01	\$12	\$375	\$199	\$51	\$175	\$588
W-95	1	2.5	88	78	0.03	0.1	0.03	0.01	\$12	\$375	\$199	\$51	\$175	\$588
W-96	1	2.5	88	78	0.03	0.1	0.03	0.01	\$12	\$375	\$199	\$51	\$175	\$588
W-97	1	2.5	88	78	0.03	0.1	0.03	0.01	\$12	\$375	\$199	\$51	\$175	\$588
W-98	1	2.5	88	78	0.03	0.1	0.03							

- 3) Assumes top 20' draped with cement.
- 4) Assumes hole plugged with inert material (cuttings or alluvium) above grout up to cement surface plug.
- 5) See Appendix Sheet for hourly production, 1 hr per hole \times 1 hr per hole for move and setup.



Bond Calculation Yards, Etc.

Project Name: Mount Hope Notice- Notice or Exploration
Date of Submittal: October 25, 2005
File Name: Mount Hope Notice_102505_Beta 3b.xls

Yards, Etc. - Cost Summary				
	Labor	Equipment	Materials	Totals
Regrading Cost			N/A	\$0
Cover Placement Cost			N/A	\$0
Growth Media Placement Cost	\$24	\$66	N/A	\$89
Ripping Cost			N/A	\$0
Subtotal Earthworks	\$24	\$66	N/A	\$89
Revegetation Cost	\$33	\$28	\$125	\$186
TOTALS	\$57	\$94	\$125	\$275

Color Code Key			
User Input - Direct Input	Direct Input		
User Input - Pull Down List	Pull Down Selection		
Program Constant (can override)	Alternate Input		
Program Calculated Value	Locked Cell - Formula or Reference		

Yards, Etc. - User Input									
You must fill in ALL green cells and relevant blue cells in this section for each building or facility									
Description (required)	Physical			Cover			Growth Media		
	Area acres	Average Flat Dimension (ripping distance) ft	Regrade Volume (calculated otherwise) cy	Cover Thickness in	Distance from Cover Borrow Area ft	Slope from Facility to Borrow Area % grade	Growth Media Thickness in	Distance from Growth Media Stockpile ft	Slope from Facility to Stockpile % grade
1 Cross-country Travel	0.5	1,391					6	0	0
2									
3									
4									
5									
6									
7									
8									
9									
10									
11									
12									
13									
14									
15									
16									
17									
18									
19									
20									

Bond Calculation Yards, Etc.

Project Name: Mount Hope Notice- Notice or Exploration
Date of Submittal: October 25, 2005
File Name: Mount Hope Notice_102505_Beta 3b.xls

Yards, Etc. - User Input (cont.)											
You must fill in ALL green cells and relevant blue cells in this section for each building or facility											
Description (required)	Grading		Cover		Growth Media		Revegetation				
	Dosing Material (select)	Dosing Material Type (select)	Grading Equipment Fleet (select)	Cover Material Type (select)	Cover Placement Equipment Fleet (select)	Growth Media Material Type (select)	Seed Mix (select)	Mulch (select)	Fertilizer (select)	Scarify Rip? (select)	Ripping Fleet (select)
1 Cross-country travel	1.2	Basalt	Small			Topsoil	Mix 1			Yes	Small Dozer
2											
3											
4											
5											
6											
7											
8											
9											
10											
11											
12											
13											
14											
15											
16											
17											
18											
19											
20											

Yards, Etc. - Calculations

Grading Calculations

Average push distance assumed to be 2/3 of the 500 feet maximum from Caterpillar Handbook or 400 feet
Material assumed to be loose stockpile (1.2 productivity factor)
Slope assumed to be 0 to 5% (1.0 productivity factor)

Cover Volume Calculation

Yard area x cover thickness

Ripping/Scarifying Calculations

Flat area width = Final flat area + Average long dimensions
Number of passes = Flat area width / Grader width
Travel distance = Number of passes x Average long dimensions
Total hours = (Travel distance / Grader productivity) x (Number of passes x Grader maneuver time)

Project Name: Mount Hope Notice- Notice or Exploration
Date of Submittal: October 25, 2005
File Name: Mount Hope Notice_102505_Beta 3b.xls

[illegible]

Yards, Etc. - Foundation Cover and Growth Media Costs																
Cover					Growth Media											
Description (required)	Cover Volume cy	Topsell Replacement Fleet	Fleet Productivity BC/Yr	Number of Trucks/ Scrapers	Total Fleet Hours	Total Labor & Equip Cost \$	Total Equip Cost \$	Total Cover Cost \$	Topsell Volume cy	Topsell Replacement Fleet	Fleet Productivity BC/Yr	Number of Trucks/ Scrapers	Total Fleet Hours	Total Labor Cost \$	Total Equipment Cost \$	Total Topselling Cost \$
1 Cross-country travel	None required															
2	2								403	Random Scarpe	2,626	2	0	\$24	\$66	\$89
3	3															
4	4															
5	5															
6	6															
7	7															
8	8															
9	9															
10	10															
11	11															
12	12															
13	13															
14	14															
15	15															
16	16															
17	17															
18	18															
19	19															
20	20								403				0	\$24	\$66	\$89

Bond Calculation Yards, Etc.

Project Name: Mount Hope Notice- Notice or Exploration
 Date of Submittal: October 25, 2005
 File Name: Mount Hope Notice_102505_Beta 3b.xls

Yards, Etc. - Scarifying/Revegetation Costs											
	Description (required)	Flat Area acres	Area Long Dimension ft	Scarifying/ Ripping Hours hrs	Scarifying/ Ripping Labor Costs \$	Scarifying/ Ripping Equipment Cost \$	Total Scarifying/ Ripping Costs \$	Revegetation Labor Cost \$	Revegetation Equipment Cost \$	Revegetation Material Cost \$	Total Revegetation Cost \$
1	Gross-country travel	0.50	1,591	0	\$0	\$0	\$0	\$33	\$28	\$125	\$186
2											
3											
4											
5											
6											
7											
8											
9											
10											
11											
12											
13											
14											
15											
16											
17											
18											
19											
20											
		0.50						\$33	\$28	\$125	\$186

Bond Calculation Monitoring

Project Name: Mount Hope Notice- Notice or Exploration
Date of Submittal: October 25, 2005
File Name: Mount Hope Notice_102505_Beta 3b.xls

Reclamation Monitoring & Maintenance - Cost Summary					
	Labor	Equipment	Materials	Totals	
Reclamation Maintenance	\$33	\$28	\$138	\$198	
Reclamation Monitoring	\$2,700	\$243	N/A	\$2,943	
Subtotal Reclamation Monitoring	\$2,733	\$271	\$138	\$3,141	
Water Quality Monitoring	\$0	\$0	\$0	\$0	
TOTAL MONITORING	\$2,733	\$271	\$138	\$3,141	

Reclamation Maintenance							
Description	Total Acres	% Acres Requiring Reseeding	Seed Mix (select)	Area Reseeded acres	Seed (\$/Acre) \$/acre	Labor (\$/Acre) \$/acre	Equipment (\$/Acre) \$/acre
Reseeding	5	10.0%	Mix 2	1	\$275.00	\$65	\$55
Labor							
Equipment							
Materials							
Cost/Acre							
Subtotal							

Reclamation Monitoring							
Description	Hrs/Day	Days/Year	Number of Years	Rate (\$/hr)			
Field Work							
Field Geologist/Engineer							
Range Scientist	6	1	3	\$75			\$0
Reporting							
Field Geologist/Engineer							
Range Scientist	6	1	3	\$75			\$0
Subtotal							
Travel							
	Miles/Trip miles	Trips/Year	Years	Truck Cost \$/hr			
Travel	200	1	3	0.405			\$243
Subtotal							
Total Reclamation Monitoring							\$2,943
Notes:							

Bond Calculation Monitoring

Project Name: Mount Hope Notice- Notice or Exploration
Date of Submittal: October 25, 2005
File Name: Mount Hope Notice_102505_Beta 3b.xls

Ground & Surface Water Monitoring									
Field work									
Description	No. of units	Hrs/Day	Days/event	Events/Year	No. Years	Man-hours/year	Rate (\$/hr)	Cost \$	
Field Tech/Sampler							\$55	\$0	
Pickup Truck							\$13.03	\$0	
Pump (purchased)							\$2,140	\$0	
Subtotal Field Work								\$0	\$0

Sample Analysis									
Description	Samples #	Events/Year	No. Years	Analysis Cost \$/sample	Supplies \$/sample	Lab Cost \$	Material Cost \$	Cost \$	
				\$325	\$5.00			\$0	
				\$325	\$5.00			\$0	
				\$325	\$5.00			\$0	
				\$325	\$5.00			\$0	
				\$325	\$5.00			\$0	
Subtotal Sample Analysis								\$0	\$0

Reporting									
Description	Hrs/Event	Rate (\$/hr)	Events/Year	Man-hours/year	No. Years	Cost \$			
Field Geologist/Engineer		\$75				\$0			
Subtotal Reporting						\$0			

Total Water Quality Monitoring	
Notes:	\$0



United States Department of the Interior

BUREAU OF LAND MANAGEMENT

Battle Mountain Field Office
50 Bastian Road
Battle Mountain, Nevada 89820
<http://www.nv.blm.gov>



In Reply Refer To:
8110
BLM 6-2555
(NV063)

Robert R. Kautz, PhD
Kautz Environmental Consultants, Inc.
5200 Neil Road, Suite 200
Reno, NV 89502

Dear Bob:

In response to your letter of October 21, 2004, I have talked to Jim Moore and Renee Kockler of Idaho General Mines about the project. Part of the discussion was to need to avoid impacts to the Pony Express Trail; the result of that discussion is documented in the enclosed copy of a letter from Jim Moore. In addition, I told them that there were parts of their project area that had not been previously surveyed and that, given the changes in how BLM now consults with the Nevada SHPO, there were probably previously recorded sites that would need to be reevaluated for National Register of Historic Places eligibility.

The Pony Express Trail is going to be difficult to deal with. Since the work was done for Exxon's Mount Hope project, the trail has been designated a National Historic Trail by congress and a management plan for the entire trail has been written by the National Park Service. This plan mandates preservation of the view shed and preservation of the more pristine portions of the trail. Unfortunately, the portion of the trail through the proposed project is one of the best preserved in the Battle Mountain District. Consultations with both SHPO and the Park Service will probably be required.

In addition, a programmatic agreement will be required to deal with the adverse effect to the trail and possible adverse effects to sites that were previously considered not National Register eligible but are now eligible by today's standards. A new context will also probably be necessary as the one produced over 20 years ago by IMR is out-dated.

If you have any more questions, please give me a call at 775-635-4063.

Sincerely,



Roberta L. McGonagle
Lead Resource Management Specialist
Nonrenewable Resources

Enc. (1)

Oct. 19 letter form Idaho General Mines

cc.

James Moore, Project Manager, Idaho General Mines

Name

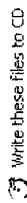
Size

Type

Date Modified

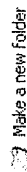
Location

Files Currently on the CD

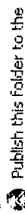


Write these files to CD

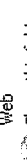
File and Folder Tasks



Make a new folder

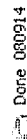


Publish this folder to the web

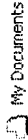


Share this folder

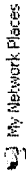
Other Places



Done_080914



My Documents



My Network Places

Details

01-14-08Ltr-Decision-CorporateMergersRecognized.pdf	52 KB	Adobe Acrobat Docu...	10/20/2010 12:16 PM	Files Currently on th...
02-27-08Ltr-Amendment-KobehCentr alB-NVN-083245.pdf	1,101 KB	Adobe Acrobat Docu...	10/20/2010 12:16 PM	Files Currently on th...
03-12-08Ltr-Decision-DetermReqFinGuar Amt.pdf	152 KB	Adobe Acrobat Docu...	10/20/2010 12:16 PM	Files Currently on th...
03-12-08Ltr-Notification-of-AssignmentNVN000567.pdf	105 KB	Adobe Acrobat Docu...	10/20/2010 12:16 PM	Files Currently on th...
03-13-09Ltr-ReqNoticeExtension.pdf	213 KB	Adobe Acrobat Docu...	10/20/2010 12:16 PM	Files Currently on th...
03-23-09Ltr-Decision-DetermReqFinGuar Amt.pdf	146 KB	Adobe Acrobat Docu...	10/20/2010 12:16 PM	Files Currently on th...
04-26-07Ltr-KobehCentr alBWellFieldDrillingNotice.pdf	42 KB	Adobe Acrobat Docu...	10/20/2010 12:16 PM	Files Currently on th...
03-30-07Ltr-NoticesforCentr alA&Centr alBWellprojects.pdf	90 KB	Adobe Acrobat Docu...	10/20/2010 12:16 PM	Files Currently on th...
03-31-09Ltr-ObligationUnderStatewideBondadJusted.pdf	48 KB	Adobe Acrobat Docu...	10/20/2010 12:16 PM	Files Currently on th...
04-03-08Ltr-Decision-StatewideBondAccepted-RiderReturned.pdf	68 KB	Adobe Acrobat Docu...	10/20/2010 12:16 PM	Files Currently on th...
04-09-07Ltr-KobehCentr alB-NVN-083245Revised.pdf	1,311 KB	Adobe Acrobat Docu...	10/20/2010 12:16 PM	Files Currently on th...
04-18-07Ltr-Decision-DetermReqFinGuar Amt.pdf	187 KB	Adobe Acrobat Docu...	10/20/2010 12:16 PM	Files Currently on th...
04-26-07Ltr-Decision-BondRider Accepted-ObUnderBondIncreased.pdf	57 KB	Adobe Acrobat Docu...	10/20/2010 12:16 PM	Files Currently on th...
05-14-07Ltr-Amendments2MthopeDrillingNotices.pdf	1,342 KB	Adobe Acrobat Docu...	10/20/2010 12:16 PM	Files Currently on th...
05-24-07Ltr-Amendments2MthopeDrillingNotices.pdf	218 KB	Adobe Acrobat Docu...	10/20/2010 12:16 PM	Files Currently on th...
05-31-07Ltr-Decision-DetermReqFinGuar Amt.pdf	181 KB	Adobe Acrobat Docu...	10/20/2010 12:16 PM	Files Currently on th...
06-03-08Ltr-Amendment-KobehCentr alB-NVN-083245.pdf	687 KB	Adobe Acrobat Docu...	10/20/2010 12:16 PM	Files Currently on th...
06-04-07Ltr-BondIncreaseforIGMtsurfacemgmtBondNV8567.pdf	160 KB	Adobe Acrobat Docu...	10/20/2010 12:16 PM	Files Currently on th...
06-07-07Ltr-BondIncreaseforIGMtsurfacemgmtBondNV8567.pdf	195 KB	Adobe Acrobat Docu...	10/20/2010 12:16 PM	Files Currently on th...
06-07-07Ltr-DrillingProcedureChanges2Notices-NVN-083245(07-2).pdf	165 KB	Adobe Acrobat Docu...	10/20/2010 12:16 PM	Files Currently on th...
06-08-07Ltr-Decision-BondRidersAccepted-ObUnderBondIncreased.pdf	38 KB	Adobe Acrobat Docu...	10/20/2010 12:16 PM	Files Currently on th...
06-11-08Ltr-Amendment-KobehCentr alB-NVN-083245Revised.pdf	59 KB	Adobe Acrobat Docu...	10/20/2010 12:16 PM	Files Currently on th...
06-12-07Ltr-Decision-DetermReqFinGuar Amt.pdf	740 KB	Adobe Acrobat Docu...	10/20/2010 12:16 PM	Files Currently on th...
06-15-07Ltr-MthopeAcquiferTestingPlan.pdf	148 KB	Adobe Acrobat Docu...	10/20/2010 12:16 PM	Files Currently on th...
06-25-08Ltr-DecisionBondRider Accepted.pdf	209 KB	Adobe Acrobat Docu...	10/20/2010 12:16 PM	Files Currently on th...
	1,530 KB	Adobe Acrobat Docu...	10/20/2010 12:16 PM	Files Currently on th...
	58 KB	Adobe Acrobat Docu...	10/20/2010 12:16 PM	Files Currently on th...



United States Department of the Interior

BUREAU OF LAND MANAGEMENT

Nevada State Office
P.O. Box 12000 (1340 Financial Blvd.)
Reno, Nevada 89520-0006
<http://www.nv.blm.gov>



In Reply Refer To:
3809 (NV923z)

JAN 14 2008

DECISION

Obligor/Operator:	:		
General Moly, Inc.	:	BLM Bond Number:	NVB000567
N. 10 Post St., Suite 610	:	Bond Amount Accepted:	\$466,309
Spokane, WA 99201	:		

Corporate Merger Recognized

Effective November 3, 2005, the BLM Nevada State Office (NSO) accepted BLM bond number NVB000567 from Idaho General Mines, Inc., as principal. The bond, currently in the amount of \$466,309, provides coverage for surface reclamation activities on operations conducted by Idaho General Mines, Inc. pursuant to regulations at 43 CFR 3809 on lands in Nevada.

On January 8, 2008, the NSO received acceptable evidence, articles of merger, concerning the merger of Idaho General Mines, Inc. with and into General Moly, Inc. with General Moly, Inc. being the surviving entity. We recognize the merger effective October 5, 2007, as certified by the Secretary of State of the State of Delaware. Therefore, by operation of law, all related BLM records are now in the name of General Moly, Inc.

Bond obligations for BLM bond number NVB000567 are shown in the table below.

Operations Number	Operations Name	Bond Amount Obligated
N-80914	Mount Hope East	\$ 56,736
N-81811	Mount Hope	\$ 28,309
N-83120	Mount Hope West	\$ 102,671
N-83245	Central "B" Well	\$ 73,629
N-83246	Central "A" Well	\$ 52,343
Total Obligations Under NVB000567		\$ 318,688

Considering the amount of BLM Bond Number NVB000567 and the amount currently obligated for surface reclamation, \$147,621 remains available for future amendments or new operations.

If you have any questions, please call Lacy Trapp at 775-861-6599; send facsimile to 775-861-6710; write to the attention of NV923z at the address on the letterhead; or send electronic mail to Lacy_Trapp@nv.blm.gov.

ATANDA CLARK

Atanda Clark
Chief, Branch of Minerals Adjudication

cc:
Idaho General Mines, Inc.
Attn: Brian Musser
455 8th Street
Elko, NV 89801

NV060 (SDrummond, LMarine)
NV923 (CDragon)



GENERAL MOLY, Inc.

2215 North 5th St.
Elko, NV 89801
Phone: 775.753.5009
Fax: 775.753.7722
Email: bmusser@generalmoly.com
Website: www.generalmoly.com

February 27, 2008

Mr. Stephen C. Drummond
Bureau of Land Management
Battle Mountain Field Office
50 Bastian Road
Battle Mountain, Nevada 89820

RE: Amendment to Kobeh Valley Central-B Well Field Drilling Notice – NVN-083245
3809 (NV063)

Dear Steve:

General Moly, Inc. (General Moly) submitted a notice to drill and test water wells in April 2007 (Notice NVN-083245) and subsequently amended the Notice in May and again in June of 2007. General Moly is submitting this Amendment with the intent of updating the disturbance for the permitted wells, adding additional well sites, and expanding the Notice area boundary.

Currently, two test wells and four observation wells have been permitted and drilled with an associated disturbance of 1.59 acres (Table 1). This disturbance amount is consistent with the previous Amendment.

Table 1: Actual Disturbance to Date (01/30/08), Kobeh Valley Central B Notice

Well ID #	Pad Dimensions (feet) / (acres)	Maximum Hole Diameter (inches)	Maximum Depth (feet)	Overland Travel (feet) / (acres)	Total Disturbance (acres)
RWX-203 Test Well	(80x200) / 0.3673	12	1,060	920 / 0.12	0.49
RWX-203 Observation Well	Same pad as test well	6	1,200	-	-
RWX-204 Observation Well	(80x200) / 0.3673	6 to 5.25 to 3.75 to	400 800 1305	-	0.37
RWX-205 Observation Well	(80x200) / 0.3673	6 to 5.25 to	400 800	-	0.37
RWX-206 Test Well	(80x200) / 0.3673	12	800	-	0.37
RWX-206 Observation Well	Same pad as test well	6	650	-	-
Test Well Sumps	(3 each @ 40' x 10' x 8')	-	-	-	Within pad disturbance
Observation Well Sumps	(4 each @ 40' x 10' x 8')	-	-	-	Within pad disturbance
Total disturbance	1.47	-	7,415	0.12	1.59

Notice NVN-083245 Amendment

Mr. Stephen C. Drummond
February 27, 2008
Page 2 of 3

General Moly is proposing to add five new wells, Wells RWX-214, RWX-215, RWX-216, RWX-217, RWX-218, and six new piezometers, one each at the five well sites and a single piezometer, Kobeh Far East, all within approximately one-half mile of the Roberts Creek Ranch (Figure 1). The drill pads will all be 80 feet x 200 feet, or 0.37 acres of disturbance per drill pad. Test well and observation well (i.e., piezometers) sumps will be included in the drill pad disturbance footprints. All of the wells except RWX-217 will be accessed from existing roads. Wells RWX-217, RWX-218, and Kobeh B Far East will require a total of approximately 4,512 feet of overland travel, for 0.59 acres of disturbance (Table 2). The Test Wells will be 20 inches in diameter for the first 200 feet and 12 inches in diameter from 200 feet to 750 feet. The Test Wells will be drilled to a maximum depth of 750 feet.

Five of the Test Wells will have an associated Observation Well (i.e., piezometer) and the Kobeh Far East Well will be a single Observation Well. The Observation Well will be drilled from the same pad as the Test Well, but will only be eight inches in diameter for the entire well depth, except the upper 50 feet which will be 12-inches in diameter. Maximum Observation Well depth will be 1,000 feet.

The drill pads will account for 2.20 acres of disturbance and the overland travel to five of the wells will account for 0.59 acres of disturbance, for a total additional disturbance of 2.79 acres. This will bring the total disturbance for the Notice to 4.47 acres.

General Moly is prepared to have a qualified archaeologist on site to monitor the placement of all drill pads and overland travel.

Table 2: Proposed Amended Disturbance to Kobeh Valley Central B Notice

Well ID #	Pad Dimensions (feet) / (acres)	Maximum Hole Diameter (inches)	Maximum Depth (feet)	Overland Travel (feet) / (acres)	Total Disturbance (acres)
RWX-214 Test Well	(80x200) / 0.3673	20 to 12 to	200 750	-	0.37
RWX-214 Observation Well	Same pad as test well	12 to 8 to	50 1,000	-	-
RWX-215 Test Well	(80x200) / 0.3673	20 to 12 to	200 750	-	0.37
RWX-215 Observation Well	Same pad as test well	12 to 8 to	50 1,000	-	-
RWX-216 Test Well	(80x200) / 0.3673	20 to 12 to	200 750	-	0.37
RWX-216 Observation Well	Same pad as test well	12 to 8 to	50 1,000	-	-
RWX-217 Test Well	(80x200) / 0.3673	20 to 12 to	200 750	1,073 / 0.14	0.51
RWX-217 Observation Well	Same pad as test well	12 to 8 to	50 1,000	-	-
RWX-218 Test Well	(80x200) / 0.3673	20 to 12 to	200 750	84 / 0.01	0.38
RWX-218 Observation Well	Same pad as test well	12 to 8 to	50 1,000	-	-
Kobeh Far East Observation Well	(80x200) / 0.3673	12 to 8 to	50 1,000	3,411 / 0.44	0.81
Test Well Sumps	(5 each @ 40' x 10' x 8')	-	-	-	Within pad disturbance
Observation Well Sumps	(6 each @ 40' x 10' x 8')	-	-	-	Within pad disturbance

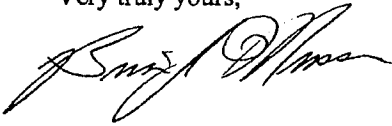
Mr. Stephen C. Drummond
February 27, 2008
Page 3 of 3

Well ID #	Pad Dimensions (feet) / (acres)	Maximum Hole Diameter (inches)	Maximum Depth (feet)	Overland Travel (feet) / (acres)	Total Disturbance (acres)
Total disturbance	2.20	-	9,750	0.59	2.79

The proposed new wells are not all within the existing Notice boundary; therefore, General Moly is proposing to expand the Notice boundary as shown in Figure 1 to include the new wells. Figure 1 shows the amended drilling program, including the new drill sites.

Reclamation costs are estimated at \$128,000 for the disturbance and well abandonment associated with this Amendment. General Moly will be contacting the BLM regarding the bond amount in the near future. If you have any questions regarding this request, please contact me at 753-5009.

Very truly yours,



Brian J. Musser
Environmental Manager
Mount Hope Project

Attachment: Notes to SRCE-based Reclamation Cost Model with Calculators
Figure 1
Reclamation Cost Estimate for Notice for Kobe Central B

cc: Andy Russell, General Moly, Inc.
Pat Rogers, General Moly, Inc.
Casey Kelly, General Moly, Inc.

Notes to SRCE-based Reclamation Cost Model with Calculators

The BLM has requested that the SRCE-based Reclamation Cost Model (Model) with Calculators be used for determining the estimated reclamation costs for Notices. This Model has several assumptions that cannot be changed by the user. As a result, the Model calculates the area of disturbance based on these assumptions and not on the actual disturbance footprints. Consequently, the Model calculated the disturbance for this Notice to be 1.15 acres, and using the actual disturbance footprints results in a total of 2.79 acres of disturbance.

The following assumptions or inputs to the Model were used to calculate the reclamation cost:

1. Five Test Wells and five Observation Wells would be drilled as pairs, each pair on the same drill pad.
2. One Observation Well would be drilled without a Test Well on its own drill pad.
3. Maximum depth of the Test Wells will be 750 ft.
4. Drill pads are 0.37 acres each.
5. Total overland travel to the various Test and Observation Wells would be 4,568 ft or 0.59 acres.
6. Maximum depth of the Observation Wells will be 1,000 ft.
7. All holes will be open at one time, for a total open hole depth of $(5 \times 750 \text{ ft}) + (6 \times 1,000 \text{ ft}) = 9,750 \text{ ft}$.

Using these assumptions, the Model calculates a reclamation cost estimate of \$120,200. However, the Model only estimates the disturbance to be 1.15 acres.

The Model was adjusted by adding additional drill pads to approximate the actual 2.79 acres of disturbance (i.e., adjusting for assumption number 4 above). By increasing the number of drill pads to 25, the Model calculated a disturbance of 2.81 acres. This increased the reclamation cost by \$7,700 to \$128,900. This adjusted figure is used as the final reclamation cost estimate for this amendment.