

Federal Reserved Water Rights Stockwater and Domestic

◆ Federal Reserved Water Right for Stockwater and Domestic

— Mine Only 5-foot Drawdown Year 2055

Grazing Allotments

JD

Roberts Mountain

Santa Fe/Ferguson

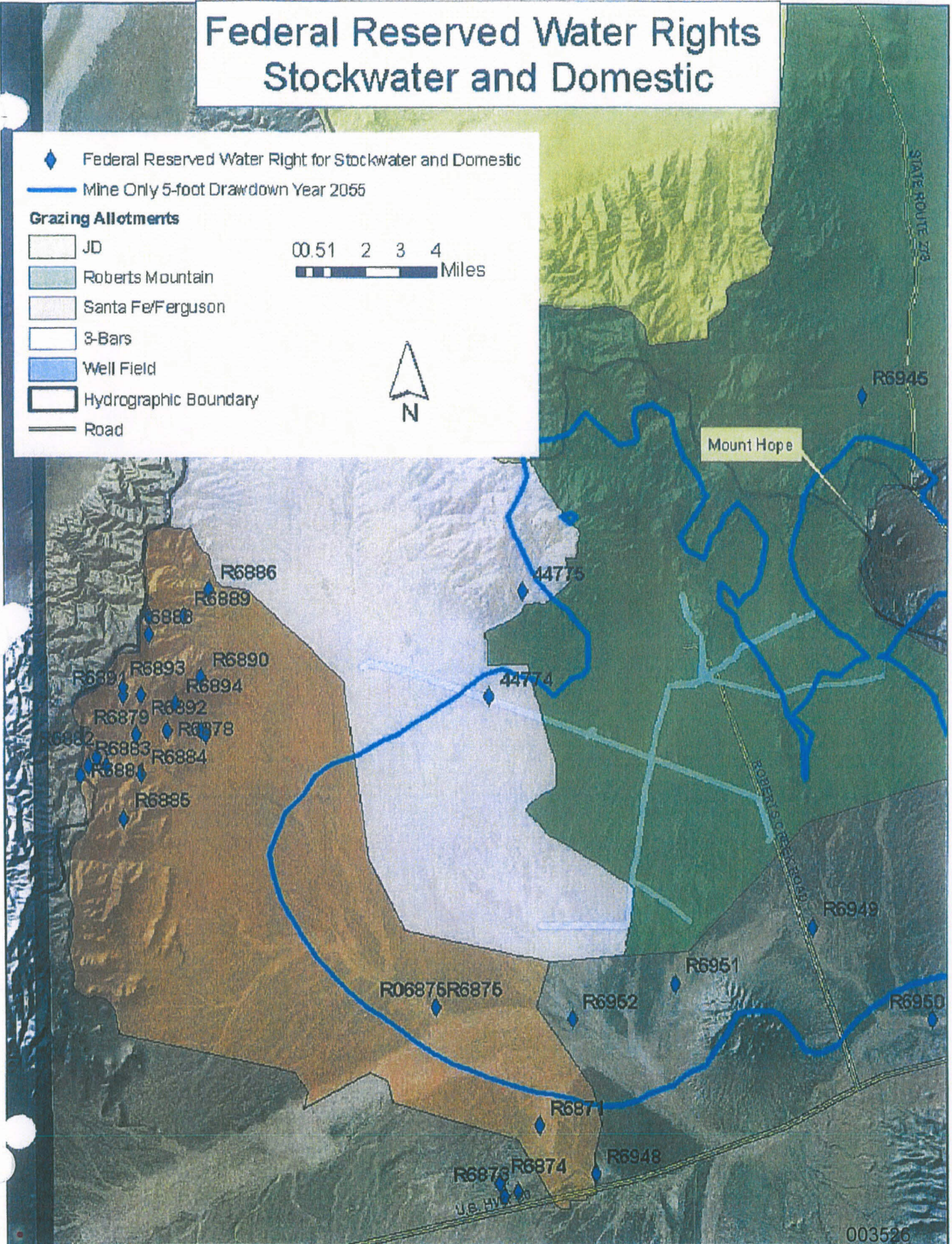
3-Bars

Well Field

Hydrographic Boundary

Road

0 0.5 1 2 3 4 Miles



003526

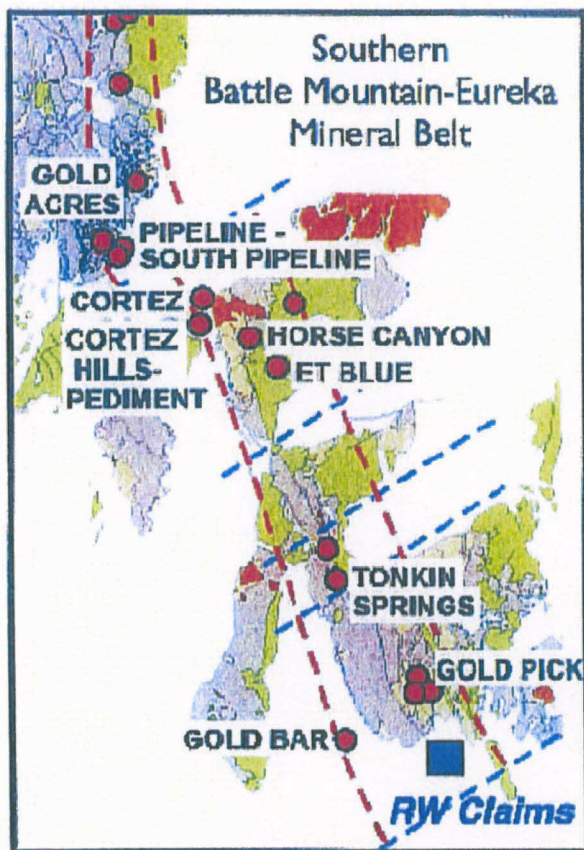
RW Project, Nevada USA

Location and Land Position

Harvest Gold's RW property in Eureka County, Nevada consists of 125 unpatented lode mining claims, covering approximately 2500 acres (1012 ha). The claims were staked by Harvest Gold in September 2010 and are 100% owned by the Company.

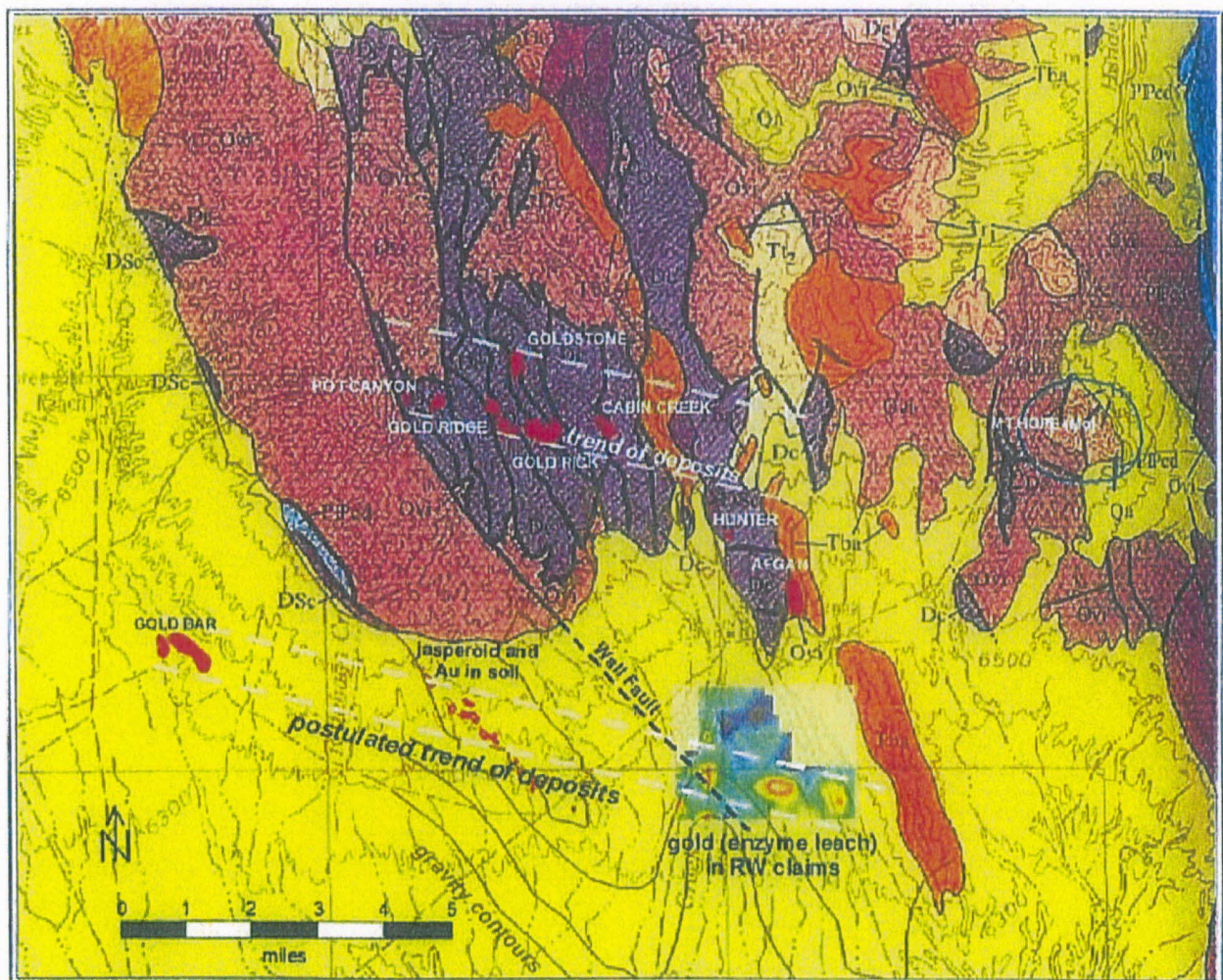
The RW claims lie from two to four miles south of the south flank of the Roberts Mountains in the northeast part of Kobeh Valley. Eight Carlin-type deposits have been discovered in the Roberts Mountains and approximately 588,000 oz gold have been produced from the Gold Bar, Gold Pick/Gold Ridge, Gold Canyon and Gold Stone mines.

The RW claims lie approximately six miles (10 km) east-southeast of the Gold Bar Mine and about 5 miles (8 km) south-southeast of the Gold Pick and Gold Ridge mines.



RW Exploration Targets

Gravel obscures bedrock geologic relationships on the RW claims, and exploration will be somewhat blind. However, projections of structural elements, stratigraphy, and geophysical trends all suggest that the RW claims cover an area of favorable stratigraphy and structure at fairly shallow depth. A west-northwest oriented gravity high extends from the Gold Bar mine southeastward onto the RW claims. This gravity trend coincides with gold and pathfinder element anomalies detected by competitors to the west of the RW property. An enzyme-leach soil survey conducted by Harvest Gold has delineated west-northwest trending gold and trace-element anomalies, which line up well with the anomalies to the west and with the west-northwest gravity high. The coincident west-northwest gravity and gold + trace element anomalies provide evidence for an unexplored trend of gold mineralization parallel to the main Pot Canyon to Cabin Creek trend, extending from Gold Bar to the RW claims.



The enzyme-leach soil anomaly shows a dominant west-northwest trend, but also has north-south elements. Mineralizing "feeder" structures in the Roberts Mountains gold deposits have north-northwest, northeast and east-northeast trends. The soil anomaly pattern on the RW claims appears to mimic these regional trends.

The coincident gravity and gold + trace element anomalies on the RW claims define a broad west-northwest trending exploration target. More detailed soil surveys and a gravity survey are planned to further refine the geophysical and geochemical anomalies and define specific targets for drill testing.

District Ore Deposits

The Roberts Mountains lie within the southern part of the Battle Mountain-Eureka Mineral Belt, which contains a number of large Carlin-type gold deposits including Pipeline, Cortez Hills, and Archimedes. The Roberts Mountains contain at least eight sediment-hosted gold deposits, ranging in size from 15,000 oz gold (Hunter) to 866,000 oz gold (Gold Pick/Gold Ridge). Total recorded production by Atlas Precious Metals is about 588,000 oz gold, of which 322,000 oz gold came from the Gold Bar mine. U.S. Gold has been exploring the Gold Pick/Gold Ridge deposits and now reports a total resource (inferred + indicated + measured) of 996,744 oz gold for the Gold Pick/Gold Ridge, Cabin Creek and Hunter deposits.

The deposits are all typical Carlin-type gold deposits hosted in Devonian carbonates (Denay Limestone, Bartine member of McColley Canyon Formation) and to a lesser extent in Mississippian clastic rocks (Webb Fm) in an erosional window through the Roberts Mountain thrust fault. The deposits exhibit a combination of structural and stratigraphic/lithologic controls and are characterized by a typical Carlin-type elemental suite of Au >> Ag, As, Sb and Hg, micron-size gold, and an alteration suite of decalcification and silicification.

The majority of the deposits in the Roberts Mountains occur within a west-northwest trend extending from Pot Canyon on the west through Gold Canyon and Gold Pick/Gold Ridge to Cabin Creek on the east. The trend of deposits corresponds to a subtle anticline in the lower-plate carbonate rocks. The Gold Bar mine is located in a small horst of Devonian carbonates surrounded by gravels along the southwest edge of the Roberts Mountains. A west-northwest trend of mineralization, parallel to the Pot Canyon to Cabin Creek trend is postulated to extend from Gold Bar to the RW claims.

The Roberts Mountains contain a number of fairly small Carlin-type deposits, but to date no major (>2 M oz Au) deposit has been found. Carlin-type districts in Nevada typically contain one or more >1 M oz gold deposit within a cluster of smaller satellite deposits. Harvest Gold believes that the major gold deposit of the district has yet to be discovered and is likely to be found in the under-explored gravel-covered area of Kobeh Valley.

Geologic Setting

Kobeh Valley is a broad gravel-filled valley flanking the Roberts Mountains. The geologic setting of the Roberts Mountains is dominated by the Roberts Mountains window, a structural block in which Silurian to Devonian platform carbonates, lying in the footwall of the Roberts Mountains thrust fault, have been uplifted and exposed through erosion. The western boundary of the southern Roberts Mountains window is a major north-northwest fault, the Wall fault, which separates deep-water Ordovician rocks in the upper plate of the thrust on the west from Silurian to Mississippian rocks of the lower plate on the east.

The Wall fault projects into Kobeh Valley and passes along the western margin of the RW claims. Upper-plate siliciclastic rocks (poor Carlin-type host rocks) can be expected to underlie the area to the west of the RW claims, whereas lower-plate carbonate rocks project onto the RW claims.

The RW claims are entirely covered by gravels, making exploration blind. Regional gravity data suggest that a west-northwest trending gravity high extends from the horst at the Gold Bar mine east-southeastward onto the RW claims. Depth to basement (lower plate carbonates) is estimated to range from 500 ft (150 m) to 1000 ft (300 m) on the RW claims.

Exploration History

Several competitors hold claims in the general area, including Newmont and U.S. Gold to the north, NV Gold at Afgan to the northeast, Nevada Eagle to the east, and Bravada to the west. Historical exploration within Kobeh Valley has been conducted sporadically since the mid-1980's, but little drilling has been done. ASARCO drilled a few holes along the southern flank of the Roberts Mountains and Atlas Minerals drilled a few holes in the northernmost part of the valley prior to relinquishing all of its claims in 2001. Atlas was focused on development of near-surface deposits in the Roberts Mountains and did not follow-up the Kobeh Valley drilling program. Newmont staked more than 2000 claims covering most of central and eastern Kobeh Valley area in 2003-2004, conducted gravity and CSAMT surveys, and drilled several shallow (ca 200 m) angle holes within the claim block in 2005. Although Harvest has no data from the holes, it is suspected that Newmont had some drilling success in the area of two claims, which Newmont continues to hold internal to Harvest's block. Mount Hope Mines drilled several deep water-well tests in Kobeh Valley including within the RW claim block. The wells were drilled for development of the Mount Hope molybdenum mine, one of the largest molybdenum deposits in the world. Tone Resources drilled several holes to the northwest of the property and confirmed the presence of shallow Paleozoic bedrock in that area. Off to the west and southwest, Bravo Ventures and Placer Dome drilled about 20 holes on Bravo's South Lone Mountain project. A 1970's vintage oil well in this area (approximately 8 km southwest of the property) intersected bedrock of lower-plate carbonates (Roberts Mountains Fm) at a depth of 427 m (1400 feet). Projecting gravity and seismic estimates of depth to bedrock from the oil well and the holes drilled by Bravo/Placer Dome indicates that bedrock is at relatively shallow depths (150 to <500m) on the RW claims.

Bravada Gold Corporation:

Check the website for more information on these projects- <http://www.bravadagold.com/en/index.php>

Gary Garaventa Land and Water Rights



STATE ROUTE 27A



IN THE SUPREME COURT OF THE STATE OF NEVADA

EUREKA COUNTY, A POLITICAL
SUBDIVISION OF THE STATE OF
NEVADA; KENNETH F. BENSON,
INDIVIDUALLY; DIAMOND CATTLE
COMPANY, LLC, A NEVADA LIMITED
LIABILITY COMPANY; AND MICHEL
AND MARGARET ANN ETCHEVERRY
FAMILY, LP, A NEVADA REGISTERED
FOREIGN LIMITED PARTNERSHIP,

Appellants,

vs.

THE STATE OF NEVADA STATE
ENGINEER; THE STATE OF NEVADA
DIVISION OF WATER RESOURCES;
AND KOBEH VALLEY RANCH, LLC, A
NEVADA LIMITED LIABILITY
COMPANY,

Respondents.

Case No. 61324

District Court Case Nos.

CV 1108-15; CV 1108-156;
CV 1108-157; CV 1112-164;
CV 1112-165; CV 1202-170

Electronically Filed
Dec 27 2012 10:22 a.m.
Nacie K. Lindeman
Clerk of Supreme Court

JOINT APPENDIX

Volume 26

KAREN A. PETERSON, NSB 366
kpeterson@allisonmackenzie.com
JENNIFER MAHE, NSB 9620
jmahe@allisonmackenzie.com
DAWN ELLERBROCK, NSB 7327
dellerbrock@allisonmackenzie.com
ALLISON, MacKENZIE, PAVLAKIS,
WRIGHT & FAGAN, LTD.

IN THE SUPREME COURT OF THE STATE OF NEVADA

EUREKA COUNTY, A POLITICAL
SUBDIVISION OF THE STATE OF
NEVADA; ET AL.,

Appellants,

vs.

THE STATE OF NEVADA STATE
ENGINEER; ET AL.,

Respondents.

Case No. 61324

District Court Case Nos.

CV 1108-15; CV 1108-156;

CV 1108-157; CV 1112-164;

CV 1112-165; CV 1202-170

JOINT APPENDIX
VOLUME 26

KAREN A. PETERSON, NSB 366

kpeterson@allisonmackenzie.com

JENNIFER MAHE, NSB 9620

jmahe@allisonmackenzie.com

DAWN ELLERBROCK, NSB 7327

dellerbrock@allisonmackenzie.com

ALLISON, MACKENZIE, PAVLAKIS,
WRIGHT & FAGAN, LTD.

**CHRONOLOGICAL APPENDIX TO
APPEAL FROM JUDGMENT**

<u>DOCUMENT</u>	<u>DATE</u>	<u>VOL</u>	<u>JA NO.</u>
Petition for Judicial Review	08/08/2011	1	01-06
Notice of Verified Petition for Writ of Prohibition, Complaint and Petition for Judicial Review	08/10/2011	1	07- 08
Verified Petition for Writ of Prohibition, Complaint and Petition for Judicial Review	08/10/2011	1	09-59
Summons and Proof of Service, Kobeh Valley Ranch, LLC	08/11/2011	1	60-62
Summons and Proof of Service, Jason King	08/11/2011	1	63-65
Affidavit of Service by Certified Mail	08/11/2011	1	66-68
Notice of Petition for Judicial Review	08/11/2011	1	69-117
Summons and Proof of Service, Kobeh Valley Ranch, LLC	08/15/2011	1	118-120
Summons and Proof of Service, Jason King	08/15/2011	1	121-123
Summons and Proof of Service, The State of Nevada	08/17/2011	1	124-128
First Additional Summons and Proof of Service, State Engineer, Division of Water Resources	08/17/2011	1	129-133
Order Allowing Intervention of Kobeh Valley Ranch, LLC, to Intervene as a Respondent	09/14/2011	1	134-135

<u>DOCUMENT</u>	<u>DATE</u>	<u>VOL</u>	<u>JA NO.</u>
Partial Motion to Dismiss, Notice of Intent to Defend	09/14/2011	1	136-140
Order Allowing Intervention of Kobeh Valley Ranch, LLC, as a Party Respondent	09/26/2011	1	141-142
Answer to Verified Petition for Writ of Prohibition, Complaint and Petition for Judicial Review by Kobeh Valley Ranch, LLC	09/28/2011	1	143-149
Answer to Petition for Judicial Review by Kobeh Valley Ranch, LLC	09/29/2011	1	150-154
Answer to Petition for Judicial Review by Kobeh Valley Ranch, LLC	09/29/2011	1	155-160
Order Directing the Consolidation of Action CV1108-156 and Action No. CV1108-157 with Action CV1108-155	10/26/2011	1	161-162
Summary of Record on Appeal	10/27/2011	2-26	163-5026
Request for and Points and Authorities in Support of Issuance of Writ of Prohibition and in Opposition to Motion to Dismiss	11/10/2011	27	5027-5052
Order Setting Briefing Schedule	12/02/2011	27	5053-5055
Reply in Support of Partial Motion to Dismiss and Opposition to Request for Writ of Prohibition	12/15/2011	27	5056-5061

<u>DOCUMENT</u>	<u>DATE</u>	<u>VOL</u>	<u>JA NO.</u>
Kobeh Valley Ranch's Reply to Conley/Morrison's Request for and Points and Authorities in Support of Issuance of Writ of Prohibition and in Opposition to Motion to Dismiss	12/15/2011	27	5062-5083
Kobeh Valley Ranch's Joinder in the State of Nevada and Jason King's Partial Motion to Dismiss	12/15/2011	27	5084-5086
Petition for Judicial Review	12/29/2011	27	5087-5091
Petition for Judicial Review	12/30/2011	27	5092-5097
Summons and Proof of Service, The State of Nevada	01/11/2012	27	5098-5100
First Additional Summons and Proof of Service, State Engineer, Division of Water Resources	01/11/2012	27	5101-5103
First Amended Petition for Judicial Review	01/12/2012	27	5104-5111
Opening Brief of Conley Land & Livestock, LLC and Lloyd Morrison	01/13/2012	27	5112-5133
Petitioners Kenneth F. Benson, Diamond Cattle Company, LLC, and Michel and Margaret Ann Etcheverry Family LP's Opening Brief	01/13/2012	27	5134-5177
Eureka County's Opening Brief	01/13/2012	27	5178-5243
Eureka County's Summary of Record on Appeal - CV1112-0164	01/13/2012	28	5244-5420
Eureka County's Supplemental Summary of Record on Appeal - CV1108-155	01/13/2012	29-30	5421-5701

<u>DOCUMENT</u>	<u>DATE</u>	<u>VOL</u>	<u>JA NO.</u>
Order Granting Extension	01/26/2012	31	5702-5703
Answer to Petition for Judicial Review	01/30/2012	31	5704-5710
Answer to First Amended Petition for Judicial Review	01/30/2012	31	5711-5717
Supplemental Petition for Judicial Review	01/31/2012	31	5718-5720
Petition for Judicial Review	02/01/2012	31	5721-5727
Summary of Record on Appeal	02/03/2012	31	5728-5733
Record on Appeal, Vol. I, Bates Stamped Pages 1-216	02/03/2012	31	5734-5950
Record on Appeal, Vol. II, Bates Stamped Pages 217-421	02/03/2012	32	5951-6156
Record on Appeal, Vol. III, Bates Stamped Pages 422-661	02/03/2012	33	6157-6397
Answer to Petition to Judicial Review	02/23/2012	34	6398-6403
Answering Brief	02/24/2012	34	6404-6447
Respondent Kobeh Valley Ranch, LLC's Answering Brief	02/24/2012	34	6448-6518
Reply Brief of Conley Land & Livestock, LLC and Lloyd Morrison	03/28/2012	34	6519-6541
Petitioners Kenneth F. Benson, Diamond Cattle Company, LLC, and Michel and Margaret Ann Etcheverry Family LP's Reply Brief	03/28/2012	34	6542-6565
Eureka County's Reply Brief	03/28/2012	34	6566-6638

<u>DOCUMENT</u>	<u>DATE</u>	<u>VOL</u>	<u>JA NO.</u>
Transcript for Petition for Judicial Review	04/03/2012	35	6639-6779
Corrected Answering Brief	04/05/2012	35	6780-6822
Findings of Fact, Conclusions of Law, and Order Denying Petitions for Judicial Review	06/13/2012	36	6823-6881
Notice of Entry of Findings of Fact, Conclusions of Law, and Order Denying Petitions for Judicial Review	06/18/2012	36	6882-6944
Notice of Appeal	07/10/2012	36	6945-6949
Petitioners Benson, Diamond Cattle Co., and Etcheverry Family LP's Notice of Appeal	07/12/2012	36	6950-6951
Excerpts from Transcript of Proceedings	10/13/2008	36	6952-6964

**ALPHABETICAL APPENDIX TO
APPEAL FROM JUDGMENT**

<u>DOCUMENT</u>	<u>DATE</u>	<u>VOL</u>	<u>JA NO.</u>
Affidavit of Service by Certified Mail	08/11/2011	1	66-68
Answer to Verified Petition for Writ of Prohibition, Complaint and Petition for Judicial Review by Kobeh Valley Ranch, LLC	09/28/2011	1	143-149
Answer to Petition for Judicial Review by Kobeh Valley Ranch, LLC	09/29/2011	1	150-154
Answer to Petition for Judicial Review by Kobeh Valley Ranch, LLC	09/29/2011	1	155-160
Answer to Petition for Judicial Review	01/30/2012	31	5704-5710
Answer to First Amended Petition for Judicial Review	01/30/2012	31	5711-5717
Answer to Petition to Judicial Review	02/23/2012	34	6398-6403
Answering Brief	02/24/2012	34	6404-6447
Corrected Answering Brief	04/05/2012	35	6780-6822
Eureka County's Supplemental Summary of Record on Appeal - CV1108-155	01/13/2012	29-30	5421-5701
Eureka County's Summary of Record on Appeal - CV1112-0164	01/13/2012	28	5244-5420
Eureka County's Opening Brief	01/13/2012	27	5178-5243
Eureka County's Reply Brief	03/28/2012	34	6566-6638
Excerpts from Transcript of Proceedings	10/13/2008	36	6952-6964

<u>DOCUMENT</u>	<u>DATE</u>	<u>VOL</u>	<u>JA NO.</u>
Findings of Fact, Conclusions of Law, and Order Denying Petitions for Judicial Review	06/13/2012	36	6823-6881
First Additional Summons and Proof of Service, State Engineer, Division of Water Resources	08/17/2011	1	129-133
First Additional Summons and Proof of Service, State Engineer, Division of Water Resources	01/11/2012	27	5101-5103
First Amended Petition for Judicial Review	01/12/2012	27	5104-5111
Kobeh Valley Ranch's Reply to Conley/Morrison's Request for and Points and Authorities in Support of Issuance of Writ of Prohibition and in Opposition to Motion to Dismiss	12/15/2011	27	5062-5083
Kobeh Valley Ranch's Joinder in the State of Nevada and Jason King's Partial Motion to Dismiss	12/15/2011	27	5084-5086
Notice of Verified Petition for Writ of Prohibition, Complaint and Petition for Judicial Review	08/10/2011	1	07- 08
Notice of Petition for Judicial Review	08/11/2011	1	69-117
Notice of Entry of Findings of Fact, Conclusions of Law, and Order Denying Petitions for Judicial Review	06/18/2012	36	6882-6944
Notice of Appeal	07/10/2012	36	6945-6949
Opening Brief of Conley Land & Livestock, LLC and Lloyd Morrison	01/13/2012	27	5112-5133

<u>DOCUMENT</u>	<u>DATE</u>	<u>VOL</u>	<u>JA NO.</u>
Order Allowing Intervention of Kobre Valley Ranch, LLC, to Intervene as a Respondent	09/14/2011	1	134-135
Order Allowing Intervention of Kobre Valley Ranch, LLC, as a Party Respondent	09/26/2011	1	141-142
Order Directing the Consolidation of Action CV1108-156 and Action No. CV1108-157 with Action CV1108-155	10/26/2011	1	161-162
Order Setting Briefing Schedule	12/02/2011	27	5053-5055
Order Granting Extension	01/26/2012	31	5702-5703
Partial Motion to Dismiss, Notice of Intent to Defend	09/14/2011	1	136-140
Petition for Judicial Review	08/08/2011	1	01-06
Petition for Judicial Review	12/29/2011	27	5087-5091
Petition for Judicial Review	12/30/2011	27	5092-5097
Petition for Judicial Review	02/01/2012	31	5721-5727
Petitioners Kenneth F. Benson, Diamond Cattle Company, LLC, and Michel and Margaret Ann Etcheverry Family LP's Opening Brief	01/13/2012	27	5134-5177
Petitioners Kenneth F. Benson, Diamond Cattle Company, LLC, and Michel and Margaret Ann Etcheverry Family LP's Reply Brief	03/28/2012	34	6542-6565
Petitioners Benson, Diamond Cattle Co., and Etcheverry Family LP's Notice of Appeal	07/12/2012	36	6950-6951

<u>DOCUMENT</u>	<u>DATE</u>	<u>VOL</u>	<u>JA NO.</u>
Record on Appeal, Vol. II, Bates Stamped Pages 217-421	02/03/2012	32	5951-6156
Record on Appeal, Vol. I, Bates Stamped Pages 1-216	02/03/2012	31	5734-5950
Record on Appeal, Vol. III, Bates Stamped Pages 422-661	02/03/2012	33	6157-6397
Reply in Support of Partial Motion to Dismiss and Opposition to Request for Writ of Prohibition	12/15/2011	27	5056-5061
Reply Brief of Conley Land & Livestock, LLC and Lloyd Morrison	03/28/2012	34	6519-6541
Request for and Points and Authorities in Support of Issuance of Writ of Prohibition and in Opposition to Motion to Dismiss	11/10/2011	27	5027-5052
Respondent Kobeh Valley Ranch, LLC's Answering Brief	02/24/2012	34	6448-6518
Summary of Record on Appeal	10/27/2011	2-26	163-5026
Summary of Record on Appeal	02/03/2012	31	5728-5733
Summons and Proof of Service, Kobeh Valley Ranch, LLC	08/11/2011	1	60-62
Summons and Proof of Service, Jason King	08/11/2011	1	63-65
Summons and Proof of Service, Jason King	08/15/2011	1	121-123
Summons and Proof of Service, Kobeh Valley Ranch, LLC	08/15/2011	1	118-120

<u>DOCUMENT</u>	<u>DATE</u>	<u>VOL</u>	<u>JA NO.</u>
Summons and Proof of Service, The State of Nevada	08/17/2011	1	124-128
Summons and Proof of Service, The State of Nevada	01/11/2012	27	5098-5100
Supplemental Petition for Judicial Review	01/31/2012	31	5718-5720
Transcript for Petition for Judicial Review	04/03/2012	35	6639-6779
Verified Petition for Writ of Prohibition, Complaint and Petition for Judicial Review	08/10/2011	1	09-59

CERTIFICATE OF APPENDIX (NRAP 30(g)(1))

In compliance with NRAP 30(g)(1) I hereby certify that this Appendix consists of true and correct copies of the papers in the District Court file.

DATED: December 21, 2012.

/s/ KAREN A. PETERSON

KAREN A. PETERSON, NSB #366
ALLISON, MacKENZIE, PAVLAKIS,
WRIGHT & FAGAN, LTD.

P.O. Box 646
Carson City, NV 89702

Attorneys for Appellant,
EUREKA COUNTY

Etcheverry Family Limited Partnership Land and Water Rights

- ◆ Surface Water
- Underground
- Etcheverry Family Ltd. Partnership Private Land
- Mine Only 5-foot Drawdown Year 2055
- ▭ Roberts Mountain Allotment
- Well Field
- ▭ Hydrographic Boundary
- Road

0.5 1 2 3 4
Miles



003522

MW Cattle Co. Land and Water Rights

